

VAIA Three-hole bridge mixer Pull-down with spray function - Chrome

19 875 809 Product version from 7/1/2023



- 9-1/2" Projection
- Swiveling spout 360°
- Optional restricted swivel available with swivel limiter set 12 823 970 90
- Aerated stream and spray mode
- Total height 15-1/2"
- 8" height to aerator/spout outlet
- 1-3/8" hole diameter
- 2 x pressure hose with 3/8" compression fitting
- 59" metal shower hose
- Sprayface with descaling system
- Water flow rate limited to max. 1.5 gpm
- lead-free
- Spray types can be changed while the water is running
- This product can help a building meet the requirements of Green Building Rating Systems, e.g. LEED®, BREEAM®, DGNB

(ADA)

Internal backflow preventer.

Switch back and forth between aerator and spray mode while water is running.

	Chrome	19 875 809-00 0010
	Brushed Platinum	19 875 809-06 0010
	Platinum	19 875 809-08 0010
	Durabronze (23kt Gold)	19 875 809-09 0010
	Dark Chrome	19 875 809-19 0010
	Brushed Durabronze (23kt Gold)	19 875 809-28 0010
	Matte Black	19 875 809-33 0010
	Brushed Bronze	19 875 809-42 0010
	Brushed Champagne (22kt Gold)	19 875 809-46 0010
	Champagne (22kt Gold)	19 875 809-47 0010
	Brushed Chrome	19 875 809-93 0010
	Brushed Dark Platinum	19 875 809-99 0010

Recommended article

Swivel limiter set -

12 823 970 90



Recommended article

Swivel limiter set -

12 823 970 90



Recommended article

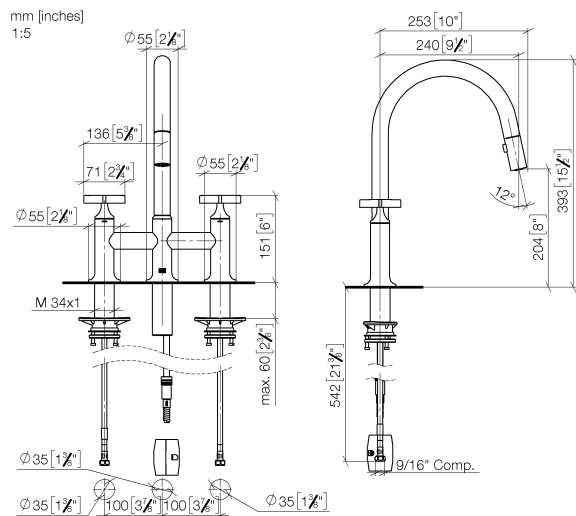
VAIA AIR SWITCH operating button, trim parts only - Chrome

10 713 809-00

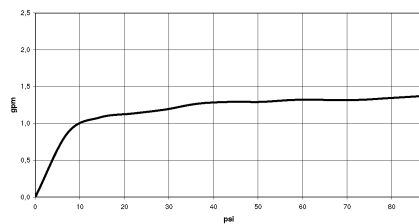


VAIA Three-hole bridge mixer Pull-down with spray function - Chrome

19 875 809 Product version from 7/1/2023



Flow rate chart



Codes & Standards

ASME A112.18.1	California Energy Commission (CEC)	cUPC	NSF372
NSF61			



VAIA Three-hole bridge mixer Pull-down with spray function - Chrome

19 875 809 Product version from 7/1/2023

Certificates

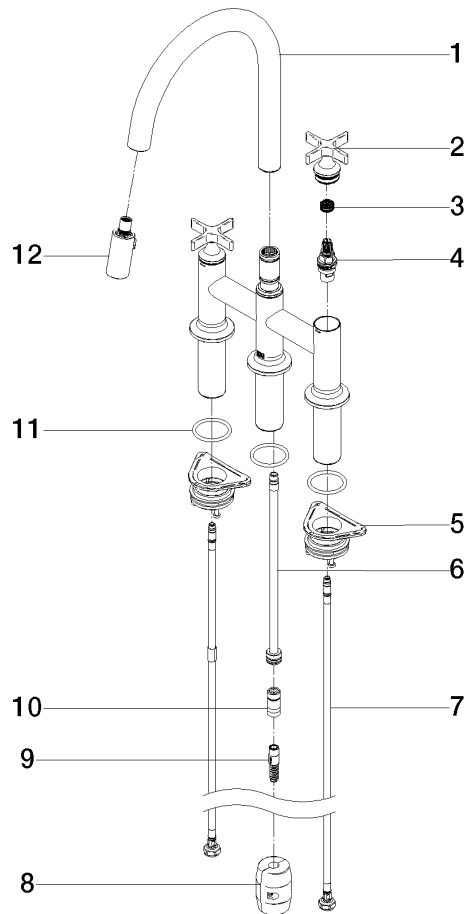
IAPMO_4976

IAPMO_N-4976

IAPMO_6397

VAIA Three-hole bridge mixer Pull-down with spray function - Chrome

19 875 809 Product version from 7/1/2023



Spare parts list

Number	Item Number	Designation	Number of units	Lead time
1	90 28 22 397 00-00	spout	1	10
2	90 20 80 036 00-00	handle	2	10
3	90 12 12 232 00 90	fixing cap	2	2
4	90 90 03 131 00 90	top	2	2
5	04 30 11 040 00 90	fixing set	2	2
6	04 28 20 067 00 90	pipe	1	2
7	04 30 04 103 00 90	hose	2	2
8	04 21 50 010 00 90	accessories	1	2
9	04 30 02 120 00-00	hose	1	10
10	90 24 03 253 01 90	adaptor	1	2
11	90 14 10 043 00 90	seal	3	2
12	90 18 40 317 00-00	shower	1	10