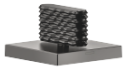


CL.1 Deck valve clockwise-closing cold - Brushed Dark Platinum

CL.1

20 002 705    Product version from 3/9/2015

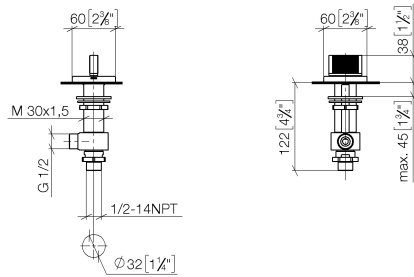


- CASCADE structure
- 1-1/4" hole diameter
- Flange 2-3/8" x 2-3/8"
- with marking for cold

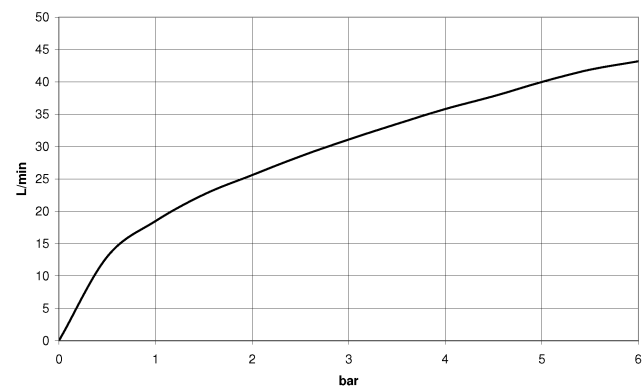
(ADA)

	Brushed Dark Platinum	20 002 705-99
	Chrome	20 002 705-00
	Brushed Platinum	20 002 705-06
	Dark Chrome	20 002 705-19
	Brushed Champagne (22kt Gold)	20 002 705-46
	Champagne (22kt Gold)	20 002 705-47

mm [inches]



**Flow rate chart**



**Codes & Standards**

ADA	ASME A112.18.1	cUPC	DIN 4109
ISO 3822	Scottish Water Byelaws	UK Water Supply Regulations	Ü-Zeichen



CL.1 Deck valve clockwise-closing cold - Brushed Dark Platinum

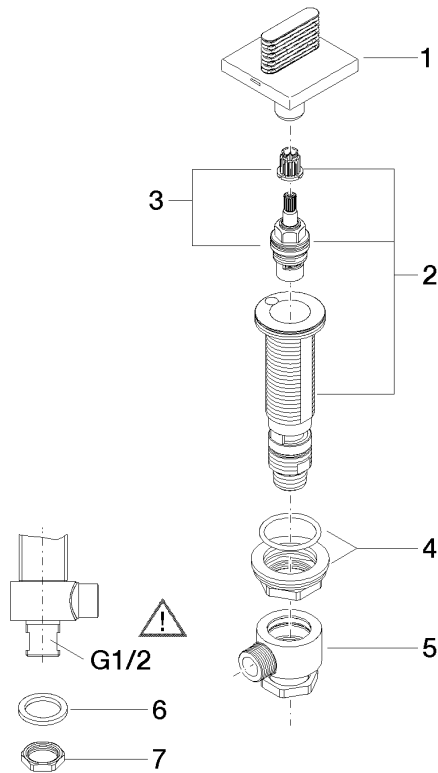
CL.1

20 002 705 Product version from 3/9/2015

Certificates and sustainability

IAPMO\_4976      WRAS\_2103      LGA\_28

Parts for other  
finishes can be found  
here: [Chrome](#)



## Spare parts list

Number	Item Number	Designation	Number of units	Lead time
5	04 17 11 023 10 90	distributor	1.00	2
4	04 23 10 032 78 90	fixing set	1.00	2
7	09 30 11 059 90	disc	1.00	2
8	09 23 10 012 90	nut	1.00	2
2	04 17 11 058 33 90	side panel	1.00	2
1	90 20 70 053 04-99	handle ( cold )	1.00	20
3	90 90 03 133 00 90	top	1.00	2
6	90 23 30 040 00-99	threaded connector	1.00	20