



CL.1 Deck valve counter-clockwise closing hot - Chrome

20 005 706 Product version from 3/9/2015



- WAVE structure
- 1-1/4" hole diameter
- Flange 2-3/8" x 1-7/8"
- with marking for hot

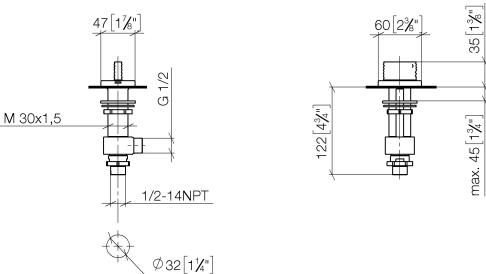
(ADA)

| | | |
|---|-------------------------------|---------------|
|  | Chrome | 20 005 706-00 |
|  | Brushed Platinum | 20 005 706-06 |
|  | Dark Chrome | 20 005 706-19 |
|  | Brushed Champagne (22kt Gold) | 20 005 706-46 |
|  | Champagne (22kt Gold) | 20 005 706-47 |
|  | Brushed Dark Platinum | 20 005 706-99 |

CL.1 Deck valve counter-clockwise closing hot - Chrome

20 005 706 Product version from 3/9/2015

mm [inches]



Flow rate chart



Codes & Standards

| | | | |
|----------|----------------|---------------------------|-----------------------------|
| ADA | ASME A112.18.1 | ASME A112.18.1/CSA B125.1 | cUPC |
| DIN 4109 | ISO 3822 | NSF/ANSI 372 | NSF/ANSI/CAN 61 |
| NSF372 | NSF61 | Scottish Water Byelaws | UK Water Supply Regulations |

Ü-Zeichen



CL.1 Deck valve counter-clockwise closing hot - Chrome

20 005 706 Product version from 3/9/2015

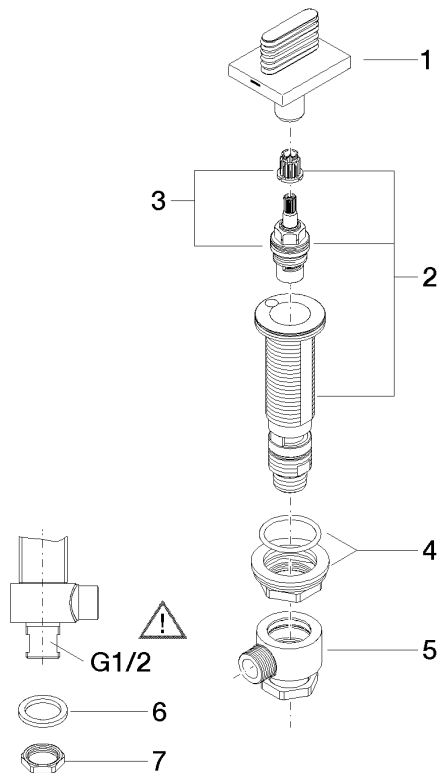
Certificates

| | | | | |
|-------------|-----------|--------|------------|---------|
| WRAS_1804 | IAPMO_N-4 | LGA_28 | IAPMO_4976 | IAPMO_6 |
| WRAS_240202 | | | | |

CL.1 Deck valve counter-clockwise closing hot - Chrome

20 005 706 Product version from 3/9/2015

Parts for other
finishes can be found
here: Brushed
Platinum



Spare parts list

| Number | Item Number | Designation | Number of units | Lead time |
|--------|--------------------|--------------------|-----------------|-----------|
| 1 | 90 20 70 055 07-00 | handle (hot) | 1 | 10 |
| 2 | 04 17 11 058 52 90 | side panel | 1 | 2 |
| 3 | 90 90 03 152 00 90 | top | 1 | 2 |
| 4 | 04 23 10 032 78 90 | fixing set | 1 | 2 |
| 5 | 04 17 11 023 10 90 | distributor | 1 | 2 |
| 6 | 90 23 30 040 00-00 | threaded connector | 1 | 10 |
| 7 | 09 30 11 059 90 | disc | 1 | 2 |
| 8 | 09 23 10 012 90 | nut | 1 | 2 |