

MADISON Three-hole lavatory mixer with drain - Brushed Platinum



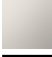



MADISON

20 700 360 Product version from 7/31/2009



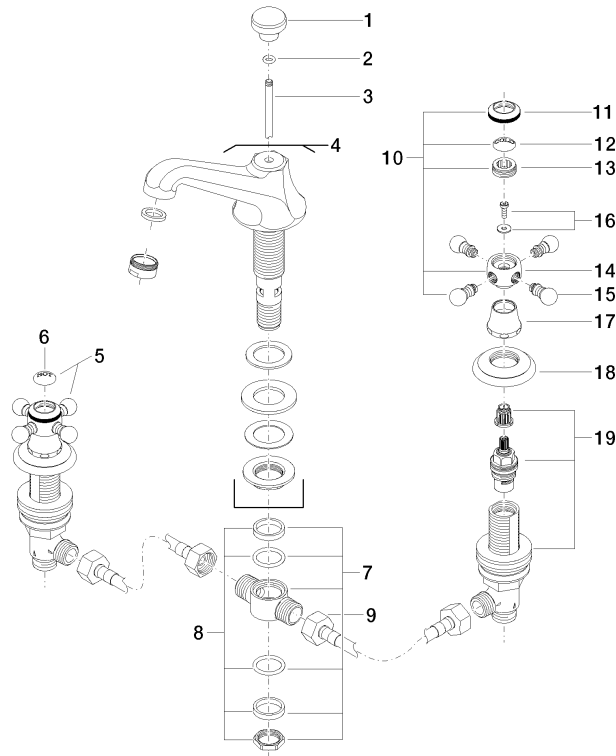
- 5-3/8" Projection
- US drain with overflow
- Rigid spout
- Round aerated stream
- Total height 2-7/8"
- Height to aerator/spout outlet 1-5/8"
- Valve hole diameter 1-1/4"
- Spout hole diameter 1-3/8"
- Without flange
- 2x 1/2" x 1/2" flex lines
- Water flow rate limited to max. 1.2 gpm
- lead-free
- This product can help a building meet the requirements of Green Building Rating Systems, e.g. LEED®, BREEAM®, DGNB

Suitable only for basins with overflow.

	Brushed Platinum	20 700 360-06 0010
	Chrome	20 700 360-00 0010
	Platinum	20 700 360-08 0010
	Durabrand (23kt Gold)	20 700 360-09 0010
	Brushed Durabrand (23kt Gold)	20 700 360-28 0010
	Brushed Dark Platinum	20 700 360-99 0010

20 700 360 Product version from 7/31/2009

Parts for other
finishes can be found
here: [Chrome](#)



20 ————— Ablaufgarnitur 04.11.01.001.00.FP



MADISON Three-hole lavatory mixer with drain - Brushed Platinum

MADISON

20 700 360 Product version from 7/31/2009

Spare parts list

Number	Item Number	Designation	Number of units	Lead time
14	09 20 36 002-06	handle	2.00	10
18	09 27 35 001-06	rosette	2.00	10
12	09 26 01 010 90	accessories	1.00	2
1	09 20 36 030-06	handle	1.00	10
4	13 700 380-06 0010	spout	1.00	-
Spare part can no longer be ordered, please order the replacement item				
19	90 17 11 040 51 90	side panel	2.00	2
10	04 20 36 002 06-06	handle (cold)	1.00	10
6	09 26 01 011 90	accessories	1.00	2
13	09 20 83 006 90	handle	2.00	2
15	09 20 36 004-06	handle	8.00	10
9	04 30 04 096 00 90	hose	2.00	2
3	09 31 09 004-06	pull-rod	1.00	10
16	04 30 30 029 00 90	fixing set	2.00	2
17	09 21 02 055-06	cover	2.00	10
8	90 23 10 012 00 90	gasket kit	1.00	2
5	04 20 36 002 07-06	handle (hot)	1.00	10
11	09 20 36 005-06	handle	2.00	10
7	90 17 11 020 10 90	distributor	1.00	2
2	90 14 10 062 00 90	seal	1.00	2
20	90 11 01 023 00-06	pop-up waste	1.00	10