



MADISON Three-hole lavatory mixer with drain - Brushed Durabrand (23kt Gold)

MADISON

20 700 370 Product version from 7/31/2009



- 5-3/8" Projection
- US drain with overflow
- Rigid spout
- Round aerated stream
- Total height 2-7/8"
- Height to aerator/spout outlet 1-5/8"
- Valve hole diameter 1-1/4"
- Spout hole diameter 1-3/8"
- Without flange
- 2x 1/2" x 1/2" flex lines
- Water flow rate limited to max. 1.2 gpm
- lead-free
- This product can help a building meet the requirements of Green Building Rating Systems, e.g. LEED®, BREEAM®, DGNB

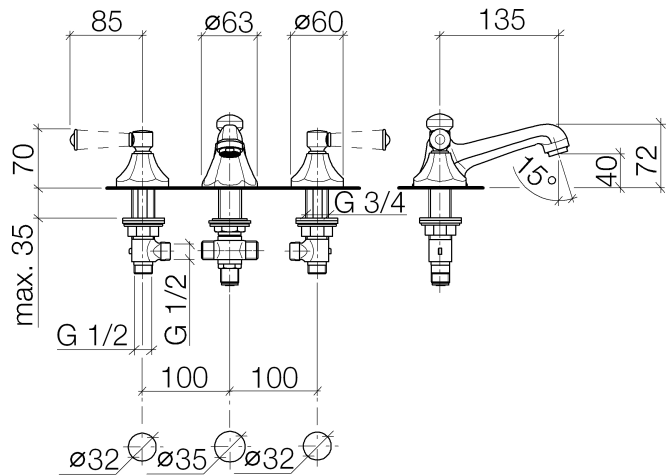
	Brushed Durabrand (23kt Gold)	20 700 370-28 0010
	Chrome	20 700 370-00 0010
	Brushed Platinum	20 700 370-06 0010
	Platinum	20 700 370-08 0010
	Durabrand (23kt Gold)	20 700 370-09 0010
	Brushed Dark Brass	20 700 370-39 0010
	Brushed Dark Platinum	20 700 370-99 0010



MADISON Three-hole lavatory mixer with drain - Brushed Durabron (23kt Gold)

MADISON

20 700 370 Product version from 7/31/2009



Codes & Standards

ADA	California Energy Commission (CEC)	NSF372	NSF61
-----	------------------------------------	--------	-------

Certificates and sustainability

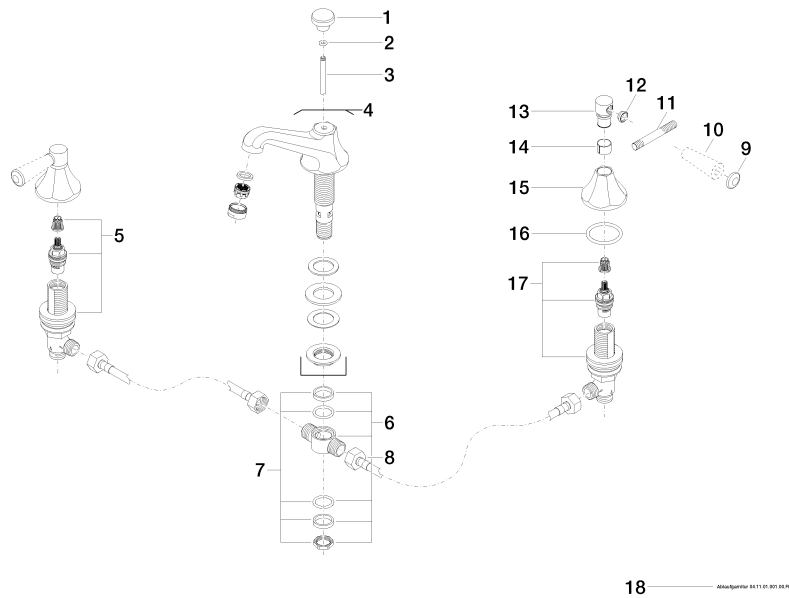
IAPMO_N-4	IAPMO_6
-----------	---------

MADISON Three-hole lavatory mixer with drain - Brushed Durabronz (23kt Gold)

MADISON

20 700 370 Product version from 7/31/2009

Parts for other
finishes can be found
here: Chrome



Spare parts list

Number	Item Number	Designation	Number of units	Lead time
3	09 31 09 004-28	pull-rod	1.00	20
1	09 20 36 030-28	handle	1.00	20
10	11 170 370-28	MADISON Lever insert - Brushed Durabronz (23kt Gold)	2.00	20
8	04 30 04 096 00 90	hose	2.00	2
17	90 17 11 040 50 90	side panel	1.00	2
13	09 20 82 000-28	handle	2.00	20
9	09 30 30 062-28	screw	2.00	20
12	09 20 37 001-28	handle	2.00	20
11	09 28 22 013 90	pipe	2.00	2
7	90 23 10 012 00 90	gasket kit	1.00	2
4	13 700 380-28 0010	spout	1.00	-
Spare part can no longer be ordered, please order the replacement item				
5	90 17 11 040 51 90	side panel	1.00	2
15	09 27 37 014-28	rosette	2.00	20
16	90 14 10 043 00 90	seal	2.00	2
6	90 17 11 020 10 90	distributor	1.00	2
2	90 14 10 062 00 90	seal	1.00	2
14	90 18 40 041 00 90	sleeve	2.00	2
18	90 11 01 001 00-28	pop-up waste	1.00	20