

TARA Three-hole lavatory mixer with drain - Brushed Chrome

TARA

20 705 882 Product version from 4/1/2024



- 6-1/2" Projection
- US drain with overflow
- Swiveling spout 360°
- Round aerated stream
- Total height 5-3/4"
- Height to aerator/spout outlet 2-1/2"
- Valve hole diameter 1-1/4"
- Spout hole diameter 1-3/8"
- Flange diameter 2-1/8"
- 2x 3/8" flexible supply lines
- Water flow rate limited to max. 1.2 gpm
- lead-free
- This product can help a building meet the requirements of Green Building Rating Systems, e.g. LEED®, BREEAM®, DGNB

Suitable only for basins with overflow.

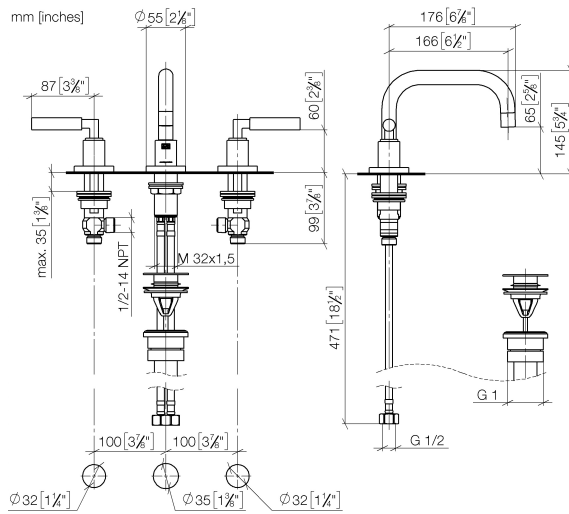
(ADA)

| | | |
|---|--------------------------------|--------------------|
|  | Brushed Chrome | 20 705 882-93 0010 |
|  | Chrome | 20 705 882-00 0010 |
|  | Brushed Platinum | 20 705 882-06 0010 |
|  | Platinum | 20 705 882-08 0010 |
|  | Dark Chrome | 20 705 882-19 0010 |
|  | Brushed Durabronze (23kt Gold) | 20 705 882-28 0010 |
|  | Matte Black | 20 705 882-33 0010 |
|  | Brushed Dark Brass | 20 705 882-39 0010 |
|  | Brushed Bronze | 20 705 882-42 0010 |
|  | Brushed Champagne (22kt Gold) | 20 705 882-46 0010 |
|  | Champagne (22kt Gold) | 20 705 882-47 0010 |
|  | Brushed Dark Platinum | 20 705 882-99 0010 |

TARA Three-hole lavatory mixer with drain - Brushed Chrome

TARA

20 705 882 Product version from 4/1/2024



Codes & Standards

| | | | |
|----------------|----------------|------------------------------------|------------|
| ADA | ASME A112.18.1 | California Energy Commission (CEC) | cUPC |
| EPA WaterSense | NSF372 | NSF61 | WaterSense |



Certificates and sustainability

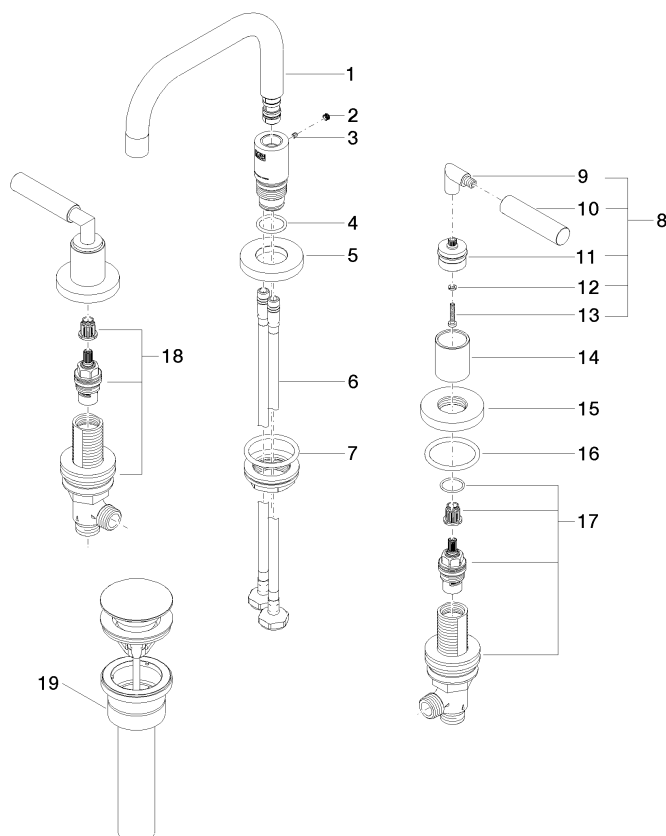
| | | | |
|-----------|------------|------------|---------|
| IAPMO_N-4 | IAPMO_8834 | IAPMO_4976 | IAPMO_6 |
|-----------|------------|------------|---------|

TARA Three-hole lavatory mixer with drain - Brushed Chrome

TARA

20 705 882 Product version from 4/1/2024

Parts for other
finishes can be found
here: [Chrome](#)



Spare parts list

| Number | Item Number | Designation | Number of units | Lead time |
|--|--------------------|--|-----------------|-----------|
| 17 | 90 17 11 040 50 90 | side panel | 1.00 | 2 |
| 5 | 09 28 10 140-93 | ring | 1.00 | 60 |
| 3 | 09 31 11 099 90 | pin | 1.00 | 2 |
| 9 | 04 18 20 022 00-93 | angle | 2.00 | - |
| Spare part can no longer be ordered, please order the replacement item | | | | |
| 15 | 09 27 89 105-93 | rosette | 2.00 | 20 |
| 1 | 90 28 22 370 01-93 | spout | 1.00 | 20 |
| 7 | 04 23 10 009 02 90 | fixing set | 1.00 | 2 |
| 10 | 09 20 88 052-93 | handle | 2.00 | 20 |
| 19 | 10 125 970-93 0010 | Umbrella drain 1 1/4" - Brushed Chrome | 1.00 | 10 |
| 4 | 09 14 10 015 90 | seal | 1.00 | 2 |
| 11 | 90 12 12 219 00-93 | base | 2.00 | 20 |
| 18 | 90 17 11 040 51 90 | side panel | 1.00 | 2 |
| 6 | 04 30 04 019 00 90 | hose | 2.00 | 2 |
| 8 | 04 20 88 052 10-93 | handle | 2.00 | 60 |
| 14 | 09 21 02 140-93 | sleeve | 2.00 | 20 |
| 2 | 90 31 20 109 00 90 | plug | 1.00 | 2 |
| 16 | 90 14 10 043 00 90 | seal | 2.00 | 2 |
| 12 | 90 30 11 029 00 90 | disc | 2.00 | 2 |
| 13 | 90 30 30 075 00 90 | screw | 2.00 | 2 |