

CYO Three-hole lavatory mixer with drain Without design element - Brushed Dark Platinum


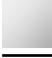





CYO

20 710 811



- 5-1/4" Projection
- US drain with overflow
- Rigid spout
- Rectangular aerated stream
- Total height 7-1/8"
- Height to aerator/spout outlet 5"
- Spout hole diameter 1-3/8"
- Valve hole diameter 1-1/4"
- Handle Ø 2-3/8"
- Water flow rate limited to max. 1.2 gpm
- lead-free
- This product can help a building meet the requirements of Green Building Rating Systems, e.g. LEED®, BREEAM®, DGNB

NOTE: Handle inserts are sold separately!

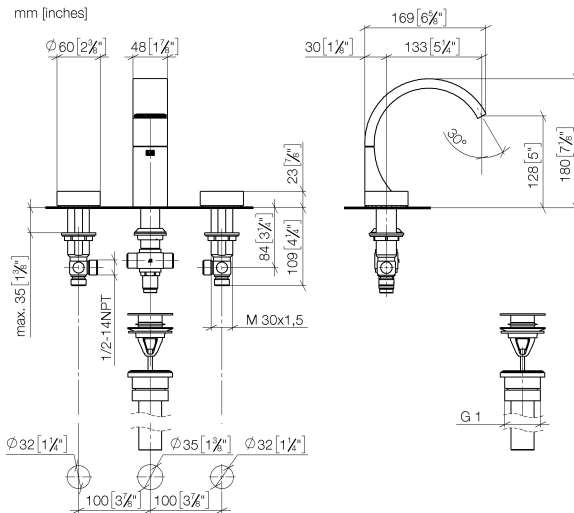
	Brushed Dark Platinum	20 710 811-99 0010
	Chrome	20 710 811-00 0010
	Brushed Platinum	20 710 811-06 0010
	Dark Chrome	20 710 811-19 0010
	Brushed Durabronze (23kt Gold)	20 710 811-28 0010
	Platinum / Brushed Platinum	20 710 811-36 0010
	Durabronze / Brushed Durabronze (23kt Gold)	20 710 811-38 0010

CYO Three-hole lavatory mixer with drain Without design element - Brushed Dark Platinum

CYO

20 710 811

mm [inches]



Codes & Standards

ASME A112.18.1	California Energy Commission (CEC)	cUPC	EPA WaterSense
NSF372	NSF61	WaterSense	



Certificates and sustainability

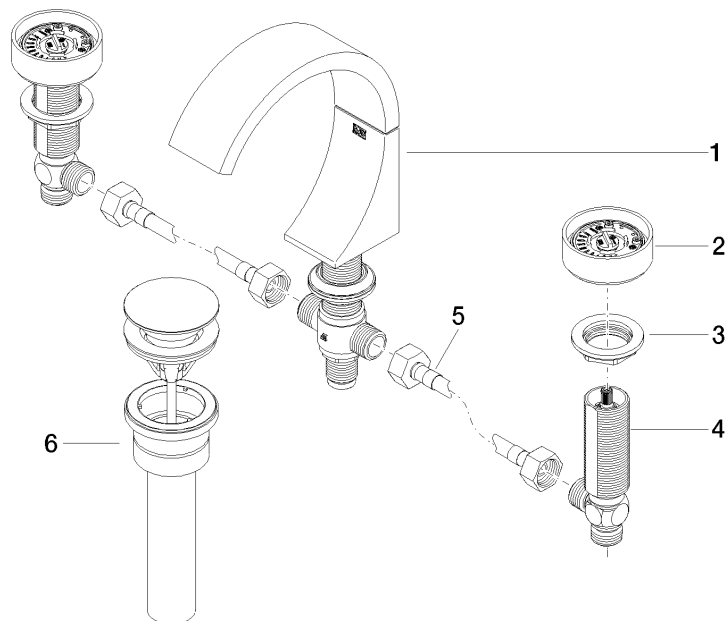
IAPMO_N-4	IAPMO_8834	IAPMO_4976	IAPMO_6
-----------	------------	------------	---------

CYO Three-hole lavatory mixer with drain Without design element - Brushed Dark Platinum

CYO

20 710 811

Parts for other
finishes can be found
here: [Chrome](#)



Spare parts list

Number	Item Number	Designation	Number of units	Lead time
5	04 30 04 096 00 90	hose	2.00	2
3	04 30 11 038 67 90	fixing set	2.00	2
6	10 125 970-99 0010	Umbrella drain 1 1/4" - Brushed Dark Platinum	1.00	20
1	13 715 811-99	CYO Lavatory spout, deck-mounted without drain - Brushed Dark Platinum	1.00	20
2	90 18 40 290 00-99	handle	2.00	20
4	04 17 11 055 61 90	side panel	2.00	2