

## VAIA Three-hole lavatory mixer with drain - Brushed Platinum

VAIA

20 713 809 Product version from 3/13/2017 to 5/27/2021



- 6-5/8" Projection
- US drain with overflow
- Swiveling spout 360°
- Round aerated stream
- Total height 11"
- Height to aerator/spout outlet 7-1/2"
- Valve hole diameter 1-1/4"
- Spout hole diameter 1-3/8"
- Flange diameter 2-3/8"
- Water flow rate limited to max. 1.2 gpm
- lead-free
- This product can help a building meet the requirements of Green Building Rating Systems, e.g. LEED®, BREEAM®, DGNB

(ADA)

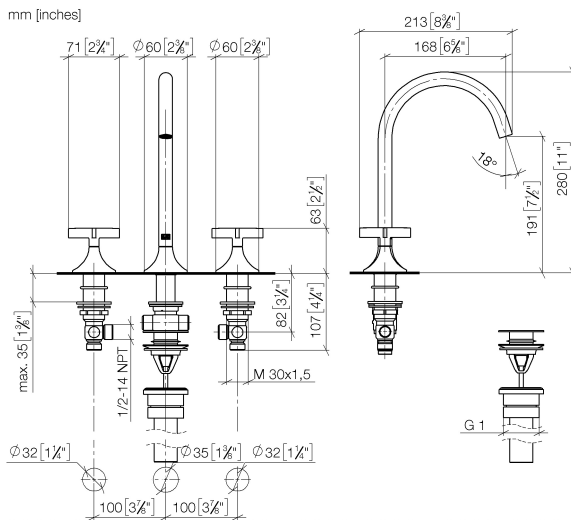
Suitable only for basins with overflow.

	Brushed Platinum	20 713 809-06 0010
	Chrome	20 713 809-00 0010
	Platinum	20 713 809-08 0010
	Dark Chrome	20 713 809-19 0010
	Brushed Durabronze (23kt Gold)	20 713 809-28 0010
	Brushed Dark Brass	20 713 809-39 0010
	Brushed Bronze	20 713 809-42 0010
	Brushed Champagne (22kt Gold)	20 713 809-46 0010
	Champagne (22kt Gold)	20 713 809-47 0010
	Brushed Dark Platinum	20 713 809-99 0010

## VAIA Three-hole lavatory mixer with drain - Brushed Platinum

VAIA

20 713 809 Product version from 3/13/2017 to 5/27/2021



### Codes & Standards

ADA	ASME A112.18.1	California Energy Commission (CEC)	cUPC
EPA WaterSense	NSF372	NSF61	WaterSense



### Certificates and sustainability

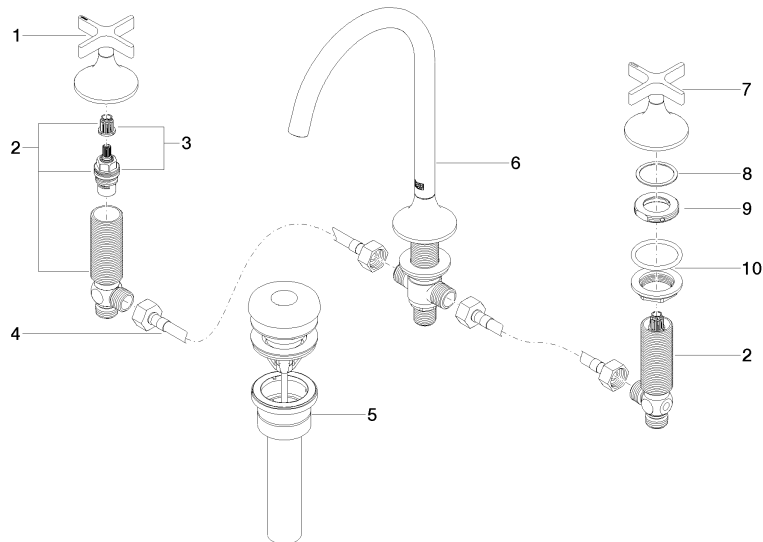
IAPMO_8834	IAPMO_N-4	IAPMO_4976	IAPMO_6
------------	-----------	------------	---------

## VAIA Three-hole lavatory mixer with drain - Brushed Platinum

VAIA

20 713 809 Product version from 3/13/2017 to 5/27/2021

Parts for other  
finishes can be found  
here: [Chrome](#)



### Spare parts list

Number	Item Number	Designation	Number of units	Lead time
5	10 125 970-06 0010	Umbrella drain 1 1/4" - Brushed Platinum	1.00	2
10	04 23 10 032 46 90	fixing set	2.00	2
2	04 17 11 055 51 90	side panel	2.00	2
4	04 30 04 096 00 90	hose	2.00	2
9	09 24 01 028 90	ring	2.00	2
1	90 20 80 011 00-06	handle ( hot )	1.00	10
6	13 716 809-06 0010	VAIA Lavatory spout, deck-mounted without drain - Brushed Platinum	1.00	-
Spare part can no longer be ordered, please order the replacement item				
7	90 20 80 010 00-06	handle ( cold )	1.00	10
8	09 28 10 003 90	ring	2.00	2
3	90 90 03 151 00 90	top	2.00	2