

## CYO Three-hole lavatory mixer with drain - Brushed Durabrass (23kt Gold)



CYO

20 713 811

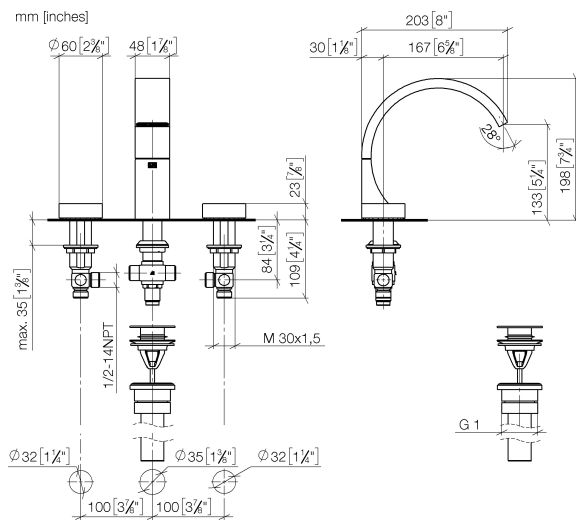


- 6-5/8" Projection
- US drain with overflow
- Rigid spout
- Rectangular aerated stream
- Total height 7-3/4"
- Height to aerator/spout outlet 5-1/4"
- Spout hole diameter 1-3/8"
- Valve hole diameter 1-1/4"
- Handle Ø 2-3/8"
- Water flow rate limited to max. 1.2 gpm
- lead-free
- This product can help a building meet the requirements of Green Building Rating Systems, e.g. LEED®, BREEAM®, DGNB

NOTE: Handle inserts are sold separately!

	Brushed Durabrass (23kt Gold)	20 713 811-28 0010
	Chrome	20 713 811-00 0010
	Brushed Platinum	20 713 811-06 0010
	Dark Chrome	20 713 811-19 0010
	Platinum / Brushed Platinum	20 713 811-36 0010
	Durabrass / Brushed Durabrass (23kt Gold)	20 713 811-38 0010
	Brushed Dark Platinum	20 713 811-99 0010

20 713 811



#### Codes & Standards

California Energy  
Commission  
(CEC)

NSF372

NSF61

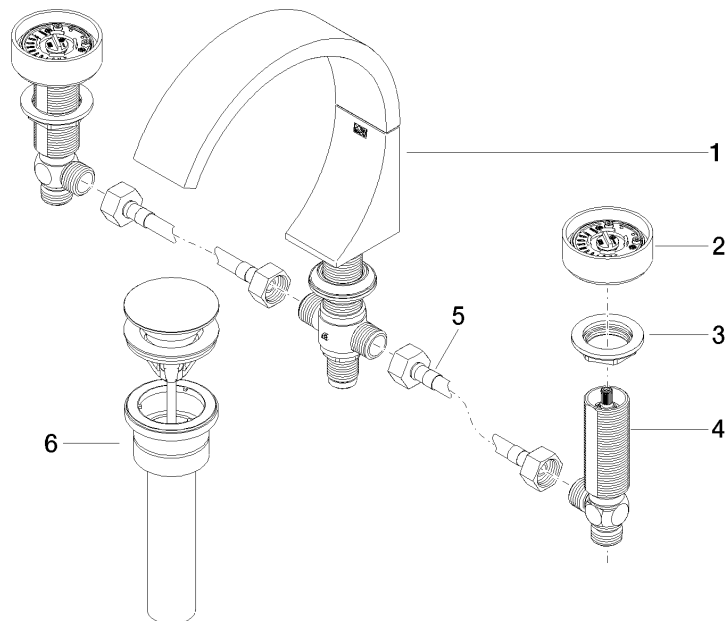
#### Certificates and sustainability

IAPMO\_N-4

IAPMO\_6

20 713 811

Parts for other  
finishes can be found  
here: Chrome



## Spare parts list

Number	Item Number	Designation	Number of units	Lead time
4	04 17 11 055 61 90	side panel	2.00	2
3	04 30 11 038 67 90	fixing set	2.00	2
2	90 18 40 290 00-28	handle	2.00	20
6	10 125 970-28 0010	Umbrella drain 1 1/4" - Brushed Durabron (23kt Gold)	1.00	2
5	04 30 04 096 00 90	hose	2.00	2
1	13 717 811-28	CYO Lavatory spout, deck-mounted without drain - Brushed Durabron (23kt Gold)	1.00	20