



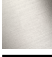






LISSÉ Three-hole lavatory mixer with drain - Dark Chrome

20 713 845 Product version from 3/9/2016



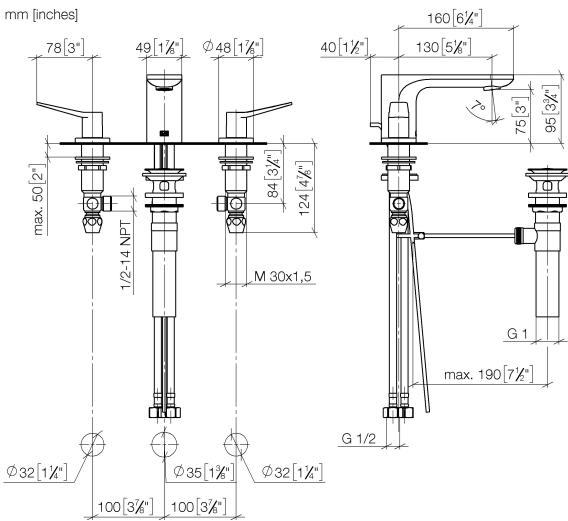
- 5-1/8" Projection
 - US drain with overflow
 - Rigid spout
 - Round aerated stream
 - Total height 3-3/4"
 - Height to aerator/spout outlet 3"
 - Valve hole diameter 1-1/4"
 - Spout hole diameter 1-3/8"
 - Flange diameter 1-7/8"
 - Water flow rate limited to max. 1.2 gpm
 - lead-free
 - This product can help a building meet the requirements of Green Building Rating Systems, e.g. LEED®, BREEAM®, DGNB
- (ADA)
- Suitable only for basins with overflow.

	Dark Chrome	20 713 845-19 0010
	Chrome	20 713 845-00 0010
	Brushed Platinum	20 713 845-06 0010
	Brushed Light Gold	20 713 845-27 0010
	Matte Black	20 713 845-33 0010
	Brushed Chrome	20 713 845-93 0010
	Brushed Dark Platinum	20 713 845-99 0010



LISSÉ Three-hole lavatory mixer with drain - Dark Chrome

20 713 845 Product version from 3/9/2016



Codes & Standards

ADA	ASME A112.18.1	ASME A112.18.1/CSA B125.1	California Energy Commission (CEC)
cUPC	NSF/ANSI 372	NSF/ANSI/CAN 61	NSF372
NSF61			

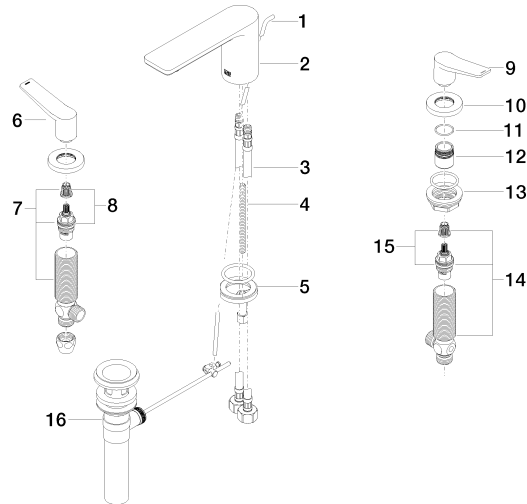
Certificates

IAPMO_N-4	IAPMO_4976	IAPMO_6
-----------	------------	---------

LISSÉ Three-hole lavatory mixer with drain - Dark Chrome

20 713 845 Product version from 3/9/2016

Parts for other
finishes can be found
here: [Chrome](#)



Spare parts list

Number	Item Number	Designation	Number of units	Lead time
1	09 31 09 120-19	pull-rod	1	60
2	90 11 84 013 02-19	spout	1	20
3	04 30 04 019 00 90	hose	2	2
4	09 31 11 012 90	pin	1	2
5	04 30 11 038 75 90	fixing set	1	2
6	09 20 84 025-19	handle (hot)	1	60
7	04 17 11 055 51 90	side panel	1	2
8	90 90 03 151 00 90	top	1	2
9	09 20 84 024-19	handle (cold)	1	60
10	09 27 84 023-19	rosette	2	60
11	09 14 10 098 90	seal	2	2
12	09 18 40 206 90	ring	2	2
13	04 23 10 032 78 90	fixing set	2	2
14	04 17 11 055 50 90	side panel	1	2
15	90 90 03 150 00 90	top	1	2
16	90 11 01 023 00-19	pop-up waste	1	20