

TARA Three-hole mixer - Brushed Bronze

20 816 892 Product version from 4/1/2024



- 9-1/4" Projection
- Swiveling spout 360°
- Aerated stream
- Total height 14-5/8"
- Height to aerator/spout outlet 8-3/8"
- Spout hole diameter 1-3/8"
- Valve hole diameter 1-1/4"
- Water flow rate limited to max. 1.5 gpm
- lead-free
- This product can help a building meet the requirements of Green Building Rating Systems, e.g. LEED®, BREEAM®, DGNB

(ADA)

	Brushed Bronze	20 816 892-42 0010
	Chrome	20 816 892-00 0010
	Brushed Platinum	20 816 892-06 0010
	Platinum	20 816 892-08 0010
	Durabrass (23kt Gold)	20 816 892-09 0010
	Dark Chrome	20 816 892-19 0010
	Brushed Durabrass (23kt Gold)	20 816 892-28 0010
	Matte Black	20 816 892-33 0010
	Brushed Champagne (22kt Gold)	20 816 892-46 0010
	Champagne (22kt Gold)	20 816 892-47 0010
	Brushed Chrome	20 816 892-93 0010
	Brushed Dark Platinum	20 816 892-99 0010

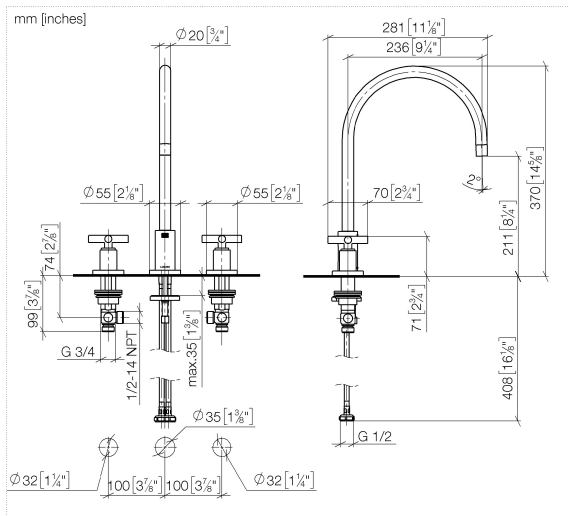
Recommended article

AIR SWITCH operating button, trim parts only - Brushed Bronze 10 713 970-42

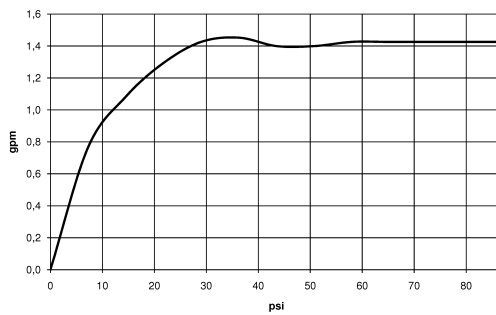


TARA Three-hole mixer - Brushed Bronze

20 816 892 Product version from 4/1/2024



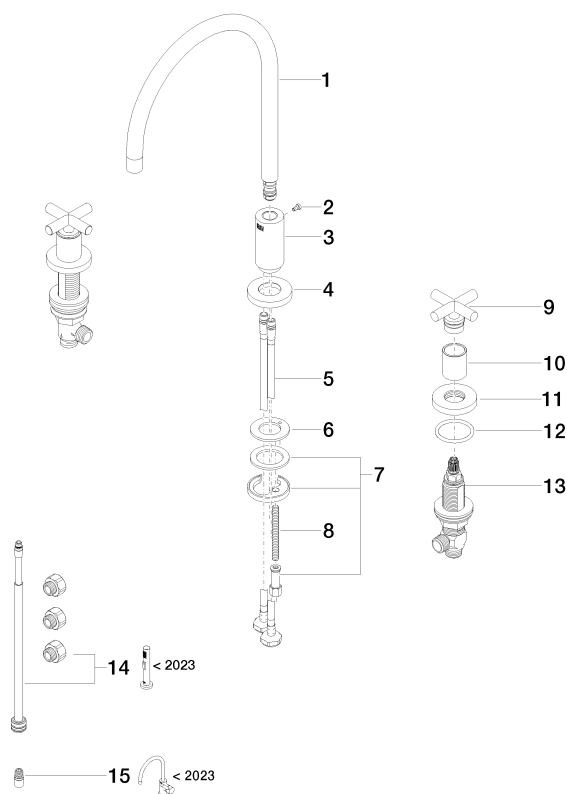
Flow rate chart



TARA Three-hole mixer - Brushed Bronze

20 816 892 Product version from 4/1/2024

Parts for other
finishes can be found
here: [Chrome](#)



Spare parts list

Number	Item Number	Designation	Number of units	Lead time
1	90 28 22 226 02-42	spout	1	30
2	09 30 30 057 90	screw	1	2
3	09 11 10 036-42	connection	1	60
4	09 28 10 140-42	ring	1	60
5	04 30 04 019 00 90	hose	2	2
6	09 14 05 047 90	seal	1	2
7	04 30 11 038 00 90	fixing set	1	2
8	09 31 11 011 90	pin	1	2
9	90 20 89 010 10-42	handle	2	30
10	09 21 02 140-42	sleeve	2	60
11	09 27 89 105-42	rosette	2	60
12	90 14 10 043 00 90	seal	2	2
13	90 17 11 040 51 90	side panel	2	2
14	90 17 09 046 13 90	conversion kit	1	2
15	90 24 03 537 01 90	adaptor	1	2