



# TARA Single-hole lavatory mixer with drain - Brushed Durabrass (23kt Gold)

22 513 892    Product version from 5/27/2021



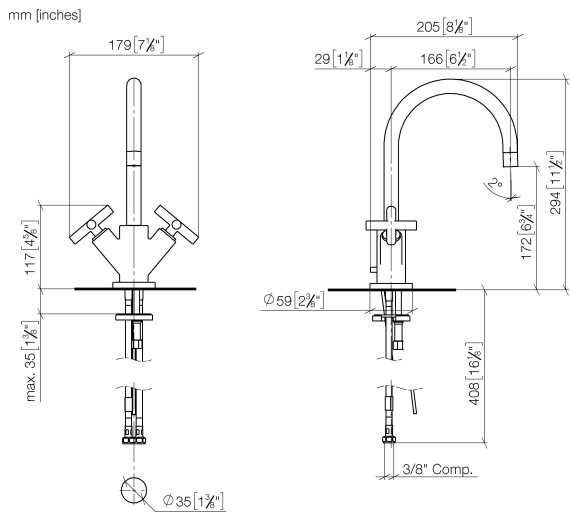
- 6-1/2" Projection
  - US drain with overflow
  - Swiveling spout 360°
  - Round aerated stream
  - Total height 11-5/8"
  - Height to aerator/spout outlet 6-3/4"
  - 1-3/8" hole diameter
  - Flange diameter 2-3/8"
  - 2 x pressure hose with 3/8" compression fitting
  - Water flow rate limited to max. 1.2 gpm
  - lead-free
  - This product can help a building meet the requirements of Green Building Rating Systems, e.g. LEED®, BREEAM®, DGNB
- (ADA)

	Brushed Durabrass (23kt Gold)	22 513 892-28 0010
	Chrome	22 513 892-00 0010
	Brushed Platinum	22 513 892-06 0010
	Platinum	22 513 892-08 0010
	Dark Chrome	22 513 892-19 0010
	Matte Black	22 513 892-33 0010
	Brushed Bronze	22 513 892-42 0010
	Brushed Champagne (22kt Gold)	22 513 892-46 0010
	Champagne (22kt Gold)	22 513 892-47 0010
	Brushed Chrome	22 513 892-93 0010
	Brushed Dark Platinum	22 513 892-99 0010



TARA Single-hole lavatory mixer with drain - Brushed Durabross (23kt Gold)

22 513 892 Product version from 5/27/2021



Codes & Standards

ADA	ASME A112.18.1/CSA B125.1	California Energy Commission (CEC)	NSF/ANSI 372
NSF/ANSI/CAN 61	NSF372	NSF61	

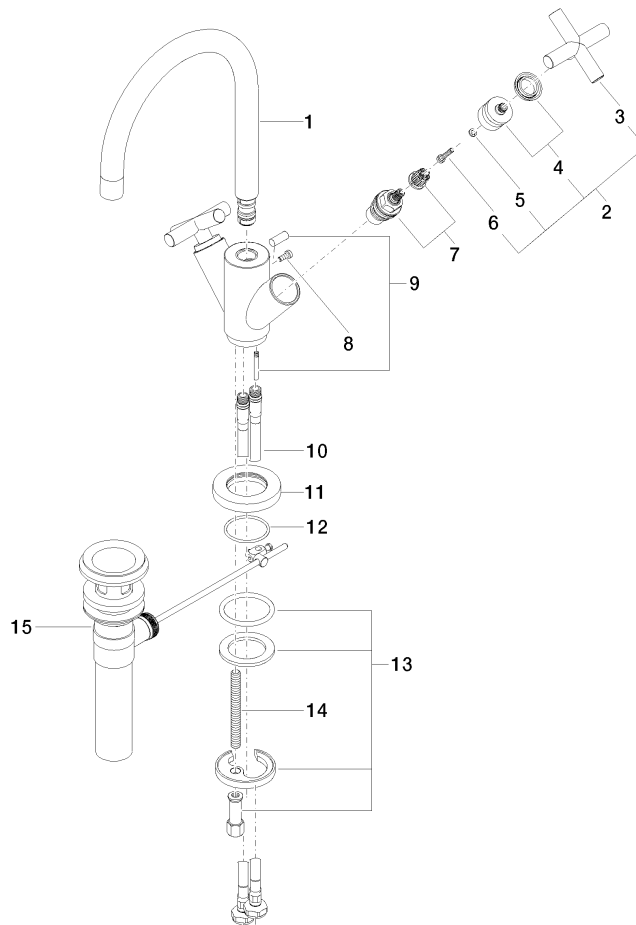
Certificates

IAPMO\_N-4 IAPMO\_6

## TARA Single-hole lavatory mixer with drain - Brushed Durabronz (23kt Gold)

22 513 892 Product version from 5/27/2021

Parts for other  
finishes can be found  
here: [Chrome](#)



### Spare parts list

Number	Item Number	Designation	Number of units	Lead time
1	90 28 22 213 02-28	spout	1	20
2	90 20 89 010 10-28	handle	2	20
3	09 20 89 010-28	handle	2	60
4	90 12 12 007 00-28	base	2	20
5	90 30 11 029 00 90	disc	2	2
6	90 30 30 075 00 90	screw	2	2
7	90 90 03 151 00 90	top	2	2
8	09 30 30 054 90	screw	1	2
9	04 20 89 035 80-28	pull-rod	1	20
10	04 30 04 106 00 90	hose	2	2
11	09 28 10 132-28	ring	1	20
12	09 14 10 134 90	seal	1	2
13	04 30 11 038 00 90	fixing set	1	2
14	09 31 11 011 90	pin	1	2
15	90 11 01 023 00-28	pop-up waste	1	20