

META Single-lever lavatory mixer with stand pipe without drain - Brushed Dark Brass

META

22 584 660 Product version from 5/1/2022



- 7-3/4" Projection
- Rigid spout
- Round aerated stream
- Total height 40-5/8" - 43-3/8"
- Height to aerator/spout outlet 37-1/2" - 40-1/4"
- Flange diameter 5-3/8"
- Water flow rate limited to max. 1.2 gpm
- lead-free
- This product can help a building meet the requirements of Green Building Rating Systems, e.g. LEED®, BREEAM®, DGNB

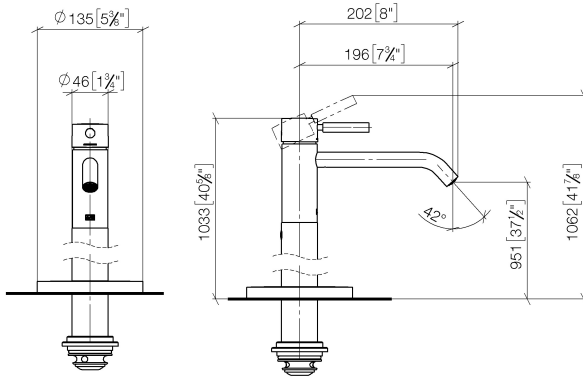
(ADA)

	Brushed Dark Brass	22 584 660-39 0010
	Chrome	22 584 660-00 0010
	Brushed Platinum	22 584 660-06 0010
	Light gold	22 584 660-26 0010
	Brushed Light Gold	22 584 660-27 0010
	Matte Black	22 584 660-33 0010
	Brushed Bronze	22 584 660-42 0010
	Brushed Champagne (22kt Gold)	22 584 660-46 0010
	Champagne (22kt Gold)	22 584 660-47 0010
	Brushed Chrome	22 584 660-93 0010
	Brushed Dark Platinum	22 584 660-99 0010

META Single-lever lavatory mixer with stand pipe without drain - Brushed Dark Brass

META

22 584 660 Product version from 5/1/2022
mm [inches]



Codes & Standards

ADA

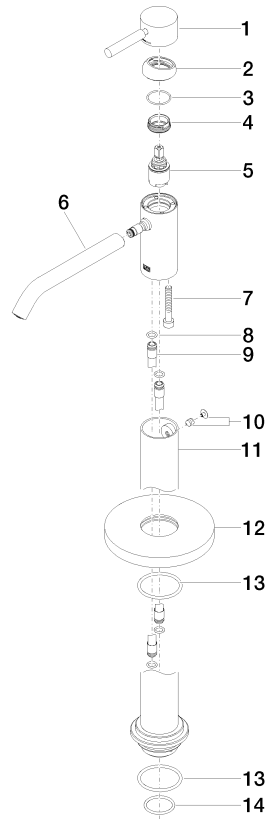
California Energy
Commission
(CEC)

META Single-lever lavatory mixer with stand pipe without drain - Brushed Dark Brass

META

22 584 660 Product version from 5/1/2022

Parts for other
finishes can be found
here: [Chrome](#)



Spare parts list

Number	Item Number	Designation	Number of units	Lead time
14	09 14 10 018 90	seal	1.00	2
11	90 28 22 574 00-39	pipe	1.00	30
8	09 14 10 139 90	seal	2.00	2
1	90 20 66 002 00-39	handle	1.00	30
9	04 28 22 022 10 90	connection	2.00	2
12	09 27 88 005-39	rosette	1.00	60
6	90 11 06 216 01-39	spout	1.00	30
7	09 30 30 111 90	screw	1.00	2
5	90 15 05 044 00 90	cartridge	1.00	2
3	09 14 10 091 90	seal	1.00	2
4	09 24 04 266 90	nut	1.00	2
2	09 28 30 041-39	cover	1.00	60
10	04 31 11 002 00 90	pin	1.00	2
13	09 14 10 084 90	seal	2.00	2