



META Single-lever lavatory mixer with stand pipe without drain - Brushed Light Gold

22 584 661 Product version from 5/1/2022



- 8" Projection
 - Round aerated stream
 - Total height 47-1/8" - 49-7/8"
 - Height to water exit point 43-1/4"
 - Flange diameter 5-3/8"
 - Water flow rate limited to max. 1.2 gpm
 - lead-free
 - This product can help a building meet the requirements of Green Building Rating Systems, e.g. LEED®, BREEAM®, DGNB
 - Swiveling spout
- (ADA)**

(ADA)

	Brushed Light Gold	22 584 661-27 0010
	Chrome	22 584 661-00 0010
	Brushed Platinum	22 584 661-06 0010
	Light gold	22 584 661-26 0010
	Matte Black	22 584 661-33 0010
	Brushed Bronze	22 584 661-42 0010
	Brushed Champagne (22kt Gold)	22 584 661-46 0010
	Champagne (22kt Gold)	22 584 661-47 0010
	Brushed Chrome	22 584 661-93 0010
	Brushed Dark Platinum	22 584 661-99 0010

Required article

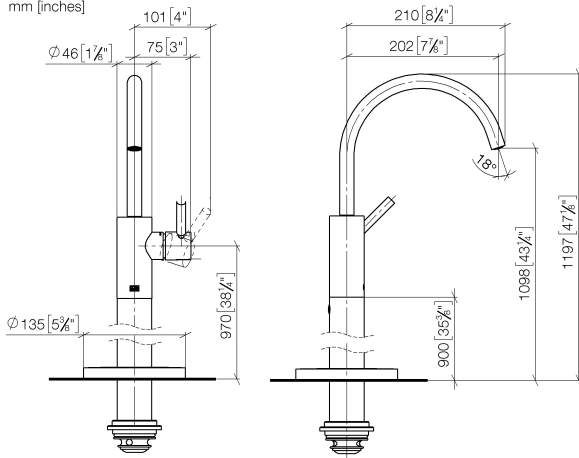


- Floor mounting rough set -**
- Min. rough in depth "
 - Max. rough in depth "

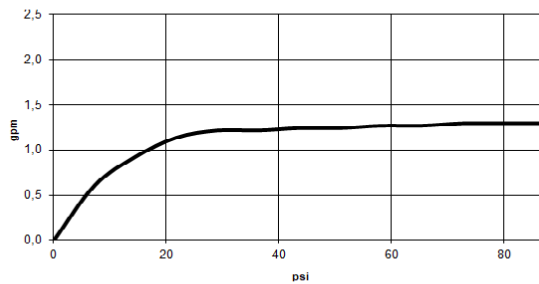
35 949 970-90
0010

META Single-lever lavatory mixer with stand pipe without drain - Brushed Light Gold

22 584 661 Product version from 5/1/2022
mm [inches]



Flow rate chart

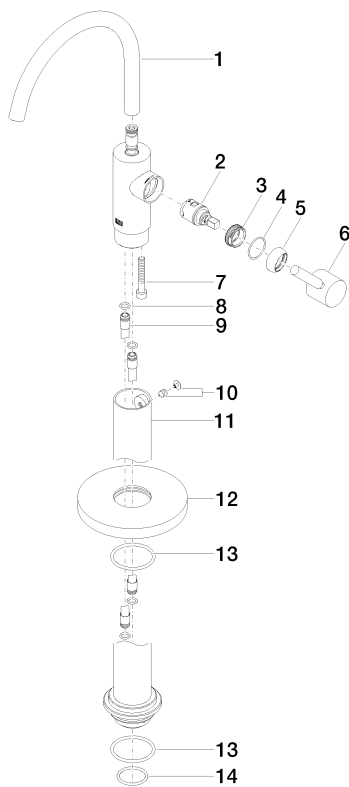


Codes & Standards

California Energy
Commission
(CEC)

META Single-lever lavatory mixer with stand pipe without drain - Brushed Light Gold

22 584 661 Product version from 5/1/2022



Spare parts list

Number	Item Number	Designation	Number of units	Lead time
1	90 28 22 313 01-27	spout	1	30
2	90 15 05 042 00 90	cartridge	1	2
3	09 24 04 266 90	nut	1	2
4	09 14 10 091 90	seal	1	2
5	09 28 30 021-27	cover	1	60
6	90 20 66 003 00-27	handle	1	30
7	09 30 30 111 90	screw	1	2
8	09 14 10 139 90	seal	2	2
9	04 28 22 022 10 90	connection	2	2
10	04 31 11 002 00 90	pin	1	2
11	90 28 22 574 00-27	pipe	1	30
12	09 27 88 005-27	rosette	1	30
13	09 14 10 084 90	seal	2	2
14	09 14 10 018 90	seal	1	2