


META Single-lever lavatory mixer with stand pipe without drain - Brushed Bronze

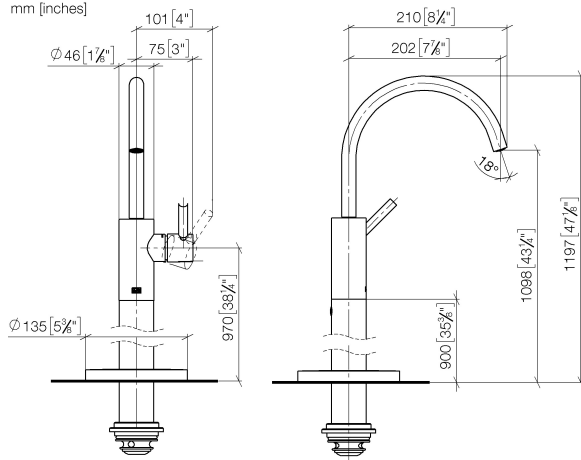
22 584 661	Product version from 5/1/2022		
	<ul style="list-style-type: none"> 8" Projection Round aerated stream Total height 47-1/8" - 49-7/8" Height to water exit point 43-1/4" Flange diameter 5-3/8" Water flow rate limited to max. 1.2 gpm lead-free This product can help a building meet the requirements of Green Building Rating Systems, e.g. LEED®, BREEAM®, DGNB Swiveling spout 		Brushed Bronze 22 584 661-42 0010
			Chrome 22 584 661-00 0010
			Brushed Platinum 22 584 661-06 0010
			Light gold 22 584 661-26 0010
			Brushed Light Gold 22 584 661-27 0010
			Matte Black 22 584 661-33 0010
			Brushed Champagne (22kt Gold) 22 584 661-46 0010
			Champagne (22kt Gold) 22 584 661-47 0010
			Brushed Chrome 22 584 661-93 0010
			Brushed Dark Platinum 22 584 661-99 0010

Required article

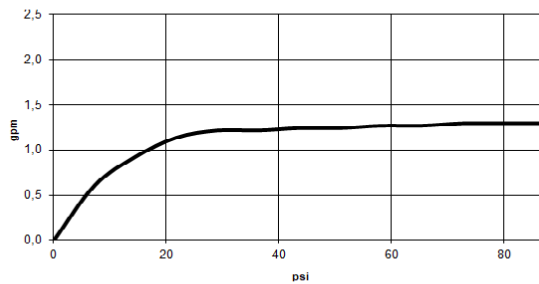
	Floor mounting rough set - •Min. rough in depth " •Max. rough in depth "	35 949 970-90 0010
---	---	-----------------------

META Single-lever lavatory mixer with stand pipe without drain - Brushed Bronze

22 584 661 Product version from 5/1/2022
mm [inches]



Flow rate chart

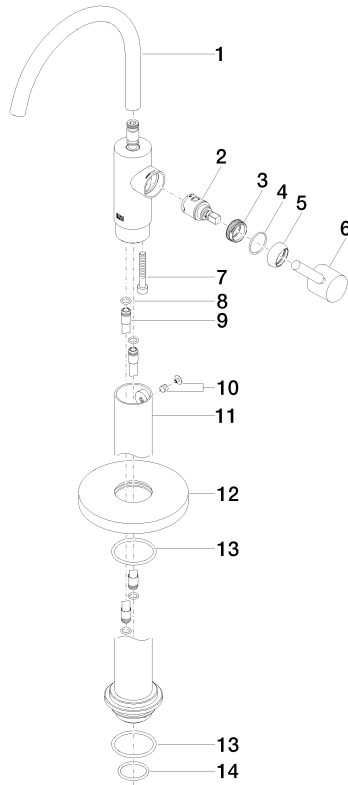


Codes & Standards

California Energy
Commission
(CEC)

META Single-lever lavatory mixer with stand pipe without drain - Brushed Bronze

22 584 661 Product version from 5/1/2022



Spare parts list

Number	Item Number	Designation	Number of units	Lead time
1	90 28 22 313 01-42	spout	1	30
2	90 15 05 042 00 90	cartridge	1	2
3	09 24 04 266 90	nut	1	2
4	09 14 10 091 90	seal	1	2
5	09 28 30 021-42	cover	1	60
6	90 20 66 003 00-42	handle	1	30
7	09 30 30 111 90	screw	1	2
8	09 14 10 139 90	seal	2	2
9	04 28 22 022 10 90	connection	2	2
10	04 31 11 002 00 90	pin	1	2
11	90 28 22 574 00-42	pipe	1	30
12	09 27 88 005-42	rosette	1	30
13	09 14 10 084 90	seal	2	2
14	09 14 10 018 90	seal	1	2