



META Single-lever lavatory mixer with stand pipe without drain - Champagne (22kt Gold)

22 584 661 Product version from 5/1/2022



- 8" Projection
- Round aerated stream
- Total height 47-1/8" - 49-7/8"
- Height to water exit point 43-1/4"
- Flange diameter 5-3/8"
- Water flow rate limited to max. 1.2 gpm
- lead-free
- This product can help a building meet the requirements of Green Building Rating Systems, e.g. LEED®, BREEAM®, DGNB
- Swiveling spout

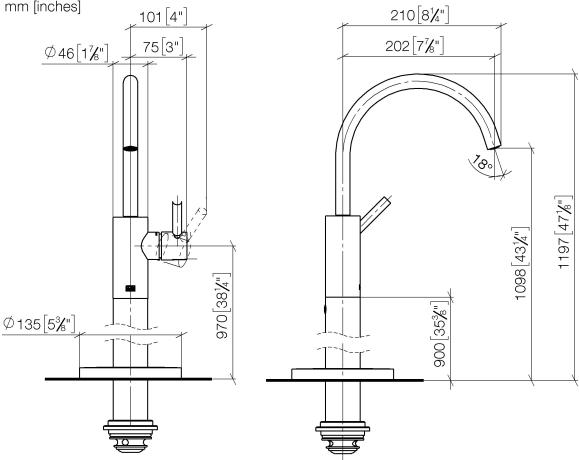
(ADA)

	Champagne (22kt Gold)	22 584 661-47 0010
	Chrome	22 584 661-00 0010
	Brushed Platinum	22 584 661-06 0010
	Light gold	22 584 661-26 0010
	Brushed Light Gold	22 584 661-27 0010
	Matte Black	22 584 661-33 0010
	Brushed Bronze	22 584 661-42 0010
	Brushed Champagne (22kt Gold)	22 584 661-46 0010
	Brushed Chrome	22 584 661-93 0010
	Brushed Dark Platinum	22 584 661-99 0010

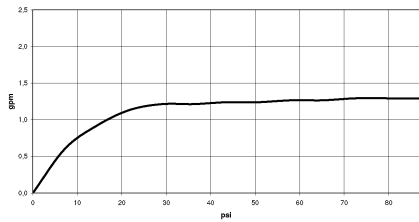


META Single-lever lavatory mixer with stand pipe without drain - Champagne  
(22kt Gold)

22 584 661 Product version from 5/1/2022  
mm [inches]



Flow rate chart



Codes & Standards

California Energy  
Commission  
(CEC)

EPA WaterSense

Water Sense

WaterSense





## META Single-lever lavatory mixer with stand pipe without drain - Champagne (22kt Gold)

---

22 584 661 Product version from 5/1/2022

### Certificates

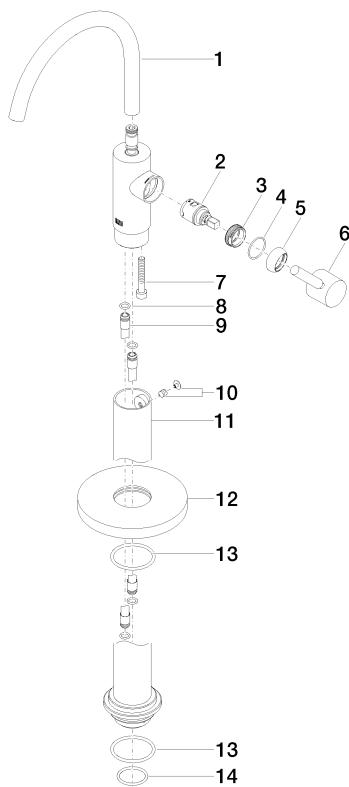
---

IAPMO\_8834

## META Single-lever lavatory mixer with stand pipe without drain - Champagne (22kt Gold)

22 584 661 Product version from 5/1/2022

Parts for other  
finishes can be found  
here: [Chrome](#)



### Spare parts list

Number	Item Number	Designation	Number of units	Lead time
1	90 28 22 313 01-47	spout	1	30
2	90 15 05 042 00 90	cartridge	1	2
3	09 24 04 266 90	nut	1	2
4	09 14 10 091 90	seal	1	2
5	09 28 30 021-47	cover	1	60
6	90 20 66 003 00-47	handle	1	-
Spare part can no longer be ordered, please order the replacement item				
7	09 30 30 111 90	screw	1	2
8	09 14 10 139 90	seal	2	2
9	04 28 22 022 10 90	connection	2	2
10	04 31 11 002 00 90	pin	1	2
11	90 28 22 574 00-47	pipe	1	30
12	09 27 88 005-47	rosette	1	30
13	09 14 10 084 90	seal	2	2
14	09 14 10 018 90	seal	1	2