



IMO Single-hole lavatory mixer with stand pipe without drain - Matte Black

22 585 671 Product version from 4/1/2024



- 7-5/8" Projection
 - Rigid spout
 - Rectangular aerated stream
 - Total height 40-7/8" - 43-3/8"
 - Height to aerator/spout outlet 38-1/4" - 41"
 - Flange diameter 5-3/8"
 - Water flow rate limited to max. 1.2 gpm
 - lead-free
 - This product can help a building meet the requirements of Green Building Rating Systems, e.g. LEED®, BREEAM®, DGNB
- (ADA)**

(ADA)

	Matte Black	22 585 671-33 0010
	Chrome	22 585 671-00 0010
	Brushed Platinum	22 585 671-06 0010
	Dark Chrome	22 585 671-19 0010
	Brushed Chrome	22 585 671-93 0010
	Brushed Dark Platinum	22 585 671-99 0010

Required article

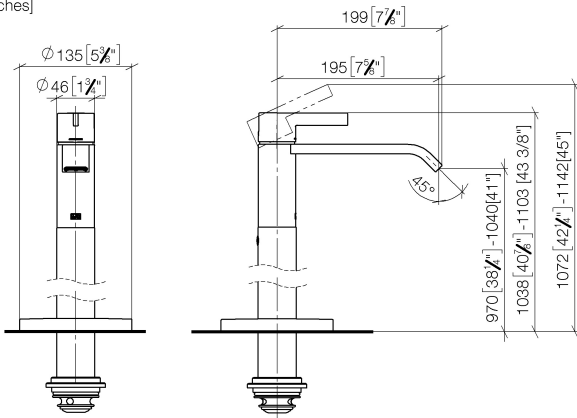


- Floor mounting rough set -** 35 949 970-90
- Min. rough in depth " 0010
 - Max. rough in depth "

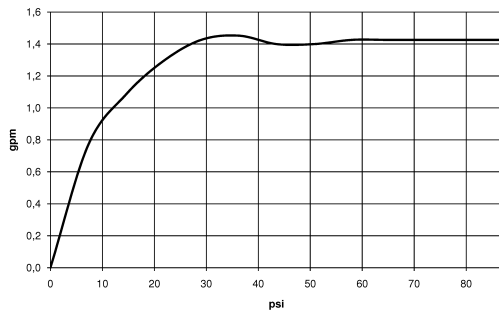
IMO Single-hole lavatory mixer with stand pipe without drain - Matte Black

22 585 671 Product version from 4/1/2024

mm [inches]

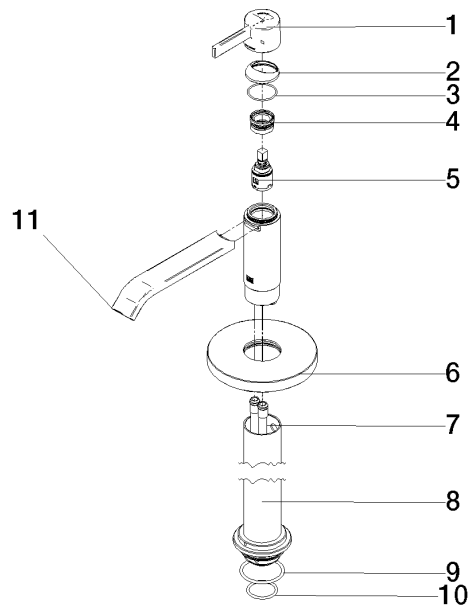


Flow rate chart



IMO Single-hole lavatory mixer with stand pipe without drain - Matte Black

22 585 671 Product version from 4/1/2024



Spare parts list

Number	Item Number	Designation	Number of units	Lead time
1	90 20 67 019 00-33	handle	1	30
2	90 28 30 059 00-33	cover	1	-
Spare part can no longer be ordered, please order the replacement item				
3	09 14 10 102 90	seal	1	2
4	90 23 10 146 00 90	nut	1	2
5	90 15 05 042 00 90	cartridge	1	2
6	09 27 88 005-33	rosette	1	30
7	04 28 22 022 10 90	connection	2	2
8	90 28 22 574 00-33	pipe	1	30
9	09 14 10 084 90	seal	1	2
10	09 14 10 018 90	seal	1	2
11	90 28 22 407 00-33	spout	1	30