

VAIA Single-hole lavatory mixer with stand pipe without drain - Brushed Bronze

22 585 809



- 8" Projection
- Swiveling spout 360°
- Round aerated stream
- Total height 49-1/4" - 52"
- Height to aerator/spout outlet 45-3/8" - 48-1/8"
- Flange diameter 5-3/8"
- Water flow rate limited to max. 1.2 gpm
- lead-free
- This product can help a building meet the requirements of Green Building Rating Systems, e.g. LEED®, BREEAM®, DGNB

(ADA)

(ADA)

	Brushed Bronze	22 585 809-42 0010
	Chrome	22 585 809-00 0010
	Brushed Platinum	22 585 809-06 0010
	Platinum	22 585 809-08 0010
	Dark Chrome	22 585 809-19 0010
	Brushed Durabronze (23kt Gold)	22 585 809-28 0010
	Brushed Champagne (22kt Gold)	22 585 809-46 0010
	Champagne (22kt Gold)	22 585 809-47 0010
	Brushed Dark Platinum	22 585 809-99 0010

Required article



Floor mounting rough set -

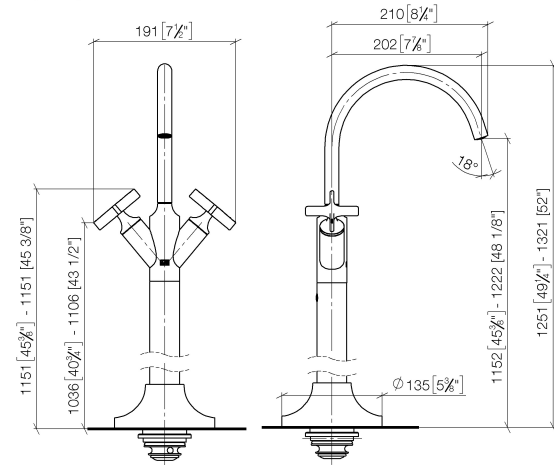
- Min. rough in depth "
- Max. rough in depth "

35 949 970-90
0010

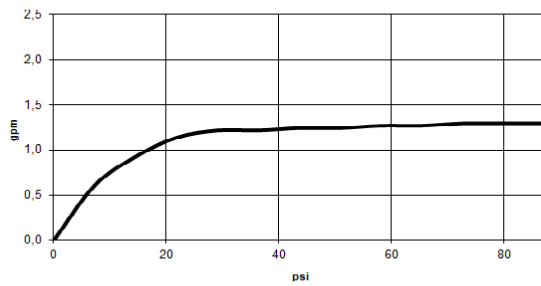
VAIA Single-hole lavatory mixer with stand pipe without drain - Brushed Bronze

22 585 809

mm [inches]



Flow rate chart



Codes & Standards

ASME A112.18.1	California Energy Commission (CEC)	cUPC	NSF372
NSF61			



VAIA Single-hole lavatory mixer with stand pipe without drain - Brushed Bronze

22 585 809

Certificates

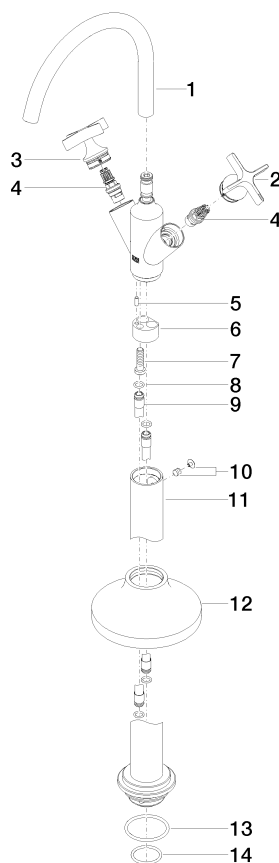
IAPMO_4976

IAPMO_6397

IAPMO_N-4976

VAIA Single-hole lavatory mixer with stand pipe without drain - Brushed Bronze

22 585 809



Spare parts list

Number	Item Number	Designation	Number of units	Lead time
1	90 28 22 313 01-42	spout	1	30
2	90 20 66 028 00-42	handle (cold)	1	-
Spare part can no longer be ordered, please order the replacement item				
3	90 20 66 029 01-42	handle (hot)	1	-
Spare part can no longer be ordered, please order the replacement item				
4	90 90 03 175 00 90	top	1	2
5	09 31 11 040 90	pin	1	2
6	09 24 03 193 90	adaptor	1	2
7	09 30 30 047 90	screw	1	2
8	09 14 10 139 90	seal	4	2
9	04 28 22 022 10 90	connection	2	2
10	04 31 11 002 00 90	pin	1	2
11	04 28 22 028 00-42	pipe	1	60
12	90 27 80 033 00-42	rosette	1	-
Spare part can no longer be ordered, please order the replacement item				
13	09 14 10 084 90	seal	1	2
14	09 14 10 018 90	seal	1	2