

TARA Single-hole mixer - Brushed Platinum

TARA

22 815 892 Product version from 6/30/2009 to 5/27/2021



- 9-1/4" Projection
- Swiveling spout 360°
- Aerated stream
- Total height 14-7/8"
- Height to aerator/spout outlet 8-5/8"
- 1-3/8" hole diameter
- 2 x pressure hose with 3/8" compression fitting
- Water flow rate limited to max. 1.5 gpm
- lead-free
- This product can help a building meet the requirements of Green Building Rating Systems, e.g. LEED®, BREEAM®, DGNB

(ADA)

Combination with side spray set or profi side spray set not possible.

| | | |
|---|--------------------------------|--------------------|
|  | Brushed Platinum | 22 815 892-06 0010 |
|  | Chrome | 22 815 892-00 0010 |
|  | Platinum | 22 815 892-08 0010 |
|  | Durabronze (23kt Gold) | 22 815 892-09 0010 |
|  | Dark Chrome | 22 815 892-19 0010 |
|  | Brushed Durabronze (23kt Gold) | 22 815 892-28 0010 |
|  | Matte Black | 22 815 892-33 0010 |
|  | Brushed Bronze | 22 815 892-42 0010 |
|  | Brushed Champagne (22kt Gold) | 22 815 892-46 0010 |
|  | Champagne (22kt Gold) | 22 815 892-47 0010 |
|  | Brushed Chrome | 22 815 892-93 0010 |
|  | Brushed Dark Platinum | 22 815 892-99 0010 |

Recommended article

AIR SWITCH operating button, trim parts only - Brushed Platinum 10 713 970-06



Recommended article

Soap dispenser with flange - Brushed Platinum 82 444 970-06

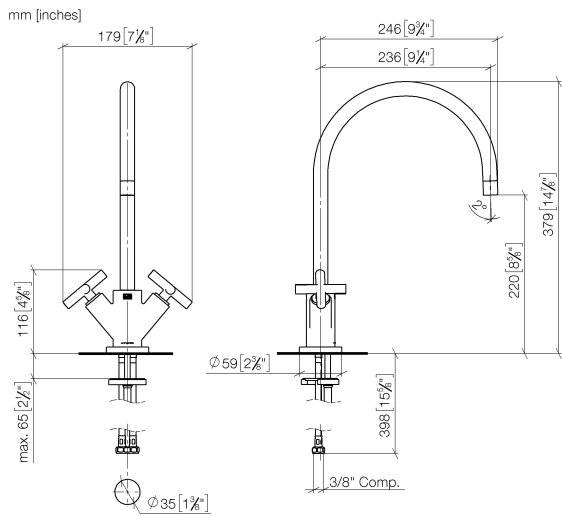




TARA Single-hole mixer - Brushed Platinum

TARA

22 815 892 Product version from 6/30/2009 to 5/27/2021



Codes & Standards

| | | | |
|--------|----------------|------------------------------------|------|
| ADA | ASME A112.18.1 | California Energy Commission (CEC) | cUPC |
| NSF372 | NSF61 | | |

Certificates and sustainability

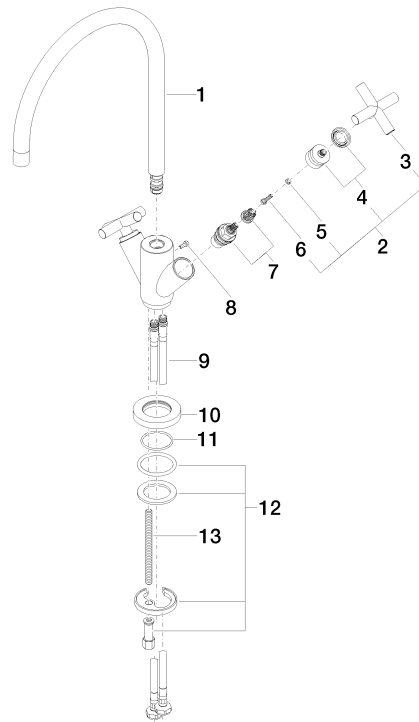
| | | |
|------------|-----------|---------|
| IAPMO_4976 | IAPMO_N-4 | IAPMO_6 |
|------------|-----------|---------|

TARA Single-hole mixer - Brushed Platinum

TARA

22 815 892 Product version from 6/30/2009 to 5/27/2021

Parts for other
finishes can be found
here: [Chrome](#)



Spare parts list

| Number | Item Number | Designation | Number of units | Lead time |
|--------|--------------------|-------------|-----------------|-----------|
| 3 | 09 20 89 010-06 | handle | 2.00 | 60 |
| 1 | 90 28 22 226 02-06 | spout | 1.00 | 10 |
| 10 | 09 28 10 132-06 | ring | 1.00 | 10 |
| 13 | 09 31 11 012 90 | pin | 1.00 | 2 |
| 4 | 90 12 12 007 00-06 | base | 2.00 | 10 |
| 8 | 09 30 30 054 90 | screw | 1.00 | 2 |
| 11 | 09 14 10 134 90 | seal | 1.00 | 2 |
| 7 | 90 90 03 151 00 90 | top | 2.00 | 2 |
| 12 | 04 30 11 038 00 90 | fixing set | 1.00 | 2 |
| 9 | 04 30 04 106 00 90 | hose | 2.00 | 2 |
| 2 | 90 20 89 010 10-06 | handle | 2.00 | 10 |
| 5 | 90 30 11 029 00 90 | disc | 2.00 | 2 |
| 6 | 90 30 30 075 00 90 | screw | 2.00 | 2 |