

## TARA Single-hole mixer - Matte Black

TARA

22 815 892 Product version from 5/27/2021



- 9-1/4" Projection
- Swiveling spout 360°
- Aerated stream
- Total height 14-7/8"
- Height to aerator/spout outlet 8-5/8"
- 1-3/8" hole diameter
- 2 x pressure hose with 3/8" compression fitting
- Water flow rate limited to max. 1.5 gpm
- lead-free
- This product can help a building meet the requirements of Green Building Rating Systems, e.g. LEED®, BREEAM®, DGNB

(ADA)

Combination with side spray set or profi side spray set not possible.

	Matte Black	22 815 892-33 0010
	Chrome	22 815 892-00 0010
	Brushed Platinum	22 815 892-06 0010
	Platinum	22 815 892-08 0010
	Durabrand (23kt Gold)	22 815 892-09 0010
	Dark Chrome	22 815 892-19 0010
	Brushed Durabrand (23kt Gold)	22 815 892-28 0010
	Brushed Bronze	22 815 892-42 0010
	Brushed Champagne (22kt Gold)	22 815 892-46 0010
	Champagne (22kt Gold)	22 815 892-47 0010
	Brushed Chrome	22 815 892-93 0010
	Brushed Dark Platinum	22 815 892-99 0010

### Recommended article

**AIR SWITCH operating button, trim parts only - Matte Black**

10 713 970-33



### Recommended article

**Soap dispenser with flange - Matte Black**

82 444 970-33

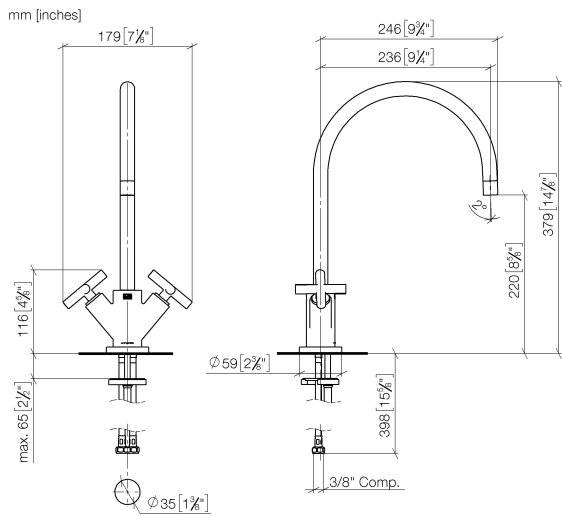




TARA Single-hole mixer - Matte Black

TARA

22 815 892    Product version from 5/27/2021



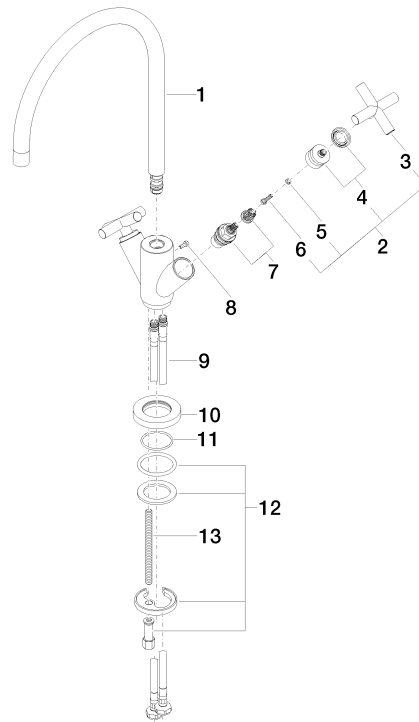
Codes & Standards

ADA	ASME A112.18.1	California Energy Commission (CEC)	cUPC
NSF372	NSF61		

Certificates and sustainability

IAPMO_N-4	IAPMO_6	IAPMO_4976 (
-----------	---------	--------------

Parts for other  
finishes can be found  
here: [Chrome](#)



## Spare parts list

Number	Item Number	Designation	Number of units	Lead time
9	04 30 04 106 00 90	hose	2.00	2
7	90 90 03 151 00 90	top	2.00	2
1	90 28 22 226 02-33	spout	1.00	30
12	04 30 11 038 00 90	fixing set	1.00	2
13	09 31 11 012 90	pin	1.00	2
8	09 30 30 054 90	screw	1.00	2
11	09 14 10 134 90	seal	1.00	2
10	09 28 10 132-33	ring	1.00	30
3	09 20 89 010-33	handle	2.00	60
4	90 12 12 007 00-33	base	2.00	30
2	90 20 89 010 10-33	handle	2.00	30
5	90 30 11 029 00 90	disc	2.00	2
6	90 30 30 075 00 90	screw	2.00	2