

MADISON Tub mixer for wall-mounted installation with hand shower set -
Chrome


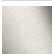
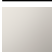



25 023 360



- 6-1/4" Projection
- Hand-held shower: COMPACT RAIN, flow rate max. 2 gpm (at 3 bar)
- Spout: Rectangular aerator
- Hand shower bracket
- Tub / shower diverter
- Flange diameter 2-3/4"
- 1/2" connection
- Center to center 6"
- Metal shower hose 49-1/4" with anti-twist device
- Spout flow rate max. 6.9 gpm

NOTE: Local building codes may require the use of an anti-scald device. Please refer to remote pressure balance valve (35 914 970 90)

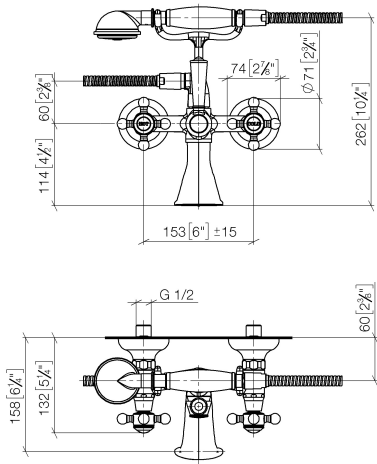
Internal backflow preventer.

	Chrome	25 023 360-00 0010
	Brushed Platinum	25 023 360-06 0010
	Platinum	25 023 360-08 0010
	Durabrand (23kt Gold)	25 023 360-09 0010
	Brushed Durabrand (23kt Gold)	25 023 360-28 0010
	Brushed Dark Platinum	25 023 360-99 0010

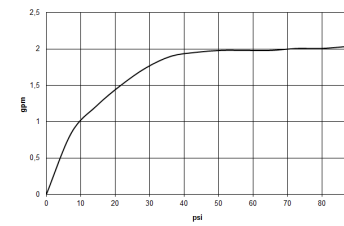


MADISON Tub mixer for wall-mounted installation with hand shower set - Chrome

25 023 360
mm [inches]



Flow rate chart



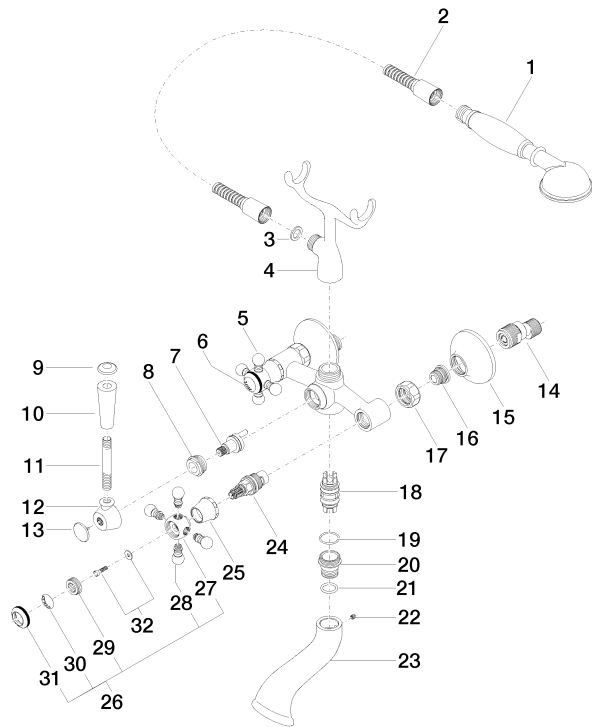
Codes & Standards

California Energy
Commission
(CEC)

MADISON Tub mixer for wall-mounted installation with hand shower set - Chrome

25 023 360

Parts for other
finishes can be found
here: Brushed
Platinum





MADISON Tub mixer for wall-mounted installation with hand shower set - Chrome

25 023 360

Spare parts list

Number	Item Number	Designation	Number of units	Lead time
1	28 002 970-00 0010	MADISON Metal hand shower with porcelain (white) handle FlowReduce - Chrome	1	10
2	28 104 970-00	Metal shower hose 1/2" x 1/2" x 49-1/4" - Chrome	1	2
3	90 14 20 002 00 90	seal	1	2
4	04 17 20 010 00-00	holder	1	10
5	04 20 36 002 07-00	handle (hot)	1	10
6	09 26 01 011 90	accessories	1	2
7	90 15 01 001 00 90	diverter	1	2
8	09 23 10 007 90	nut	1	2
9	09 30 30 062-00	screw	1	10
10	11 170 370-00	MADISON Lever insert - Chrome	1	10
11	09 28 22 013 90	pipe	1	2
12	09 18 20 011-00	base	1	10
13	09 30 30 064-00	screw	1	10
14	04 11 04 030 00 90	connection	2	2
15	09 27 39 010-00	rosette	2	10
16	04 29 05 014 00 90	nipple	2	2
17	09 23 30 010-00	nut	2	10
18	90 21 10 010 00 90	insert	1	2
19	90 14 10 056 00 90	seal	1	2
20	09 24 03 123 20 90	nipple	1	2
21	09 14 10 022 90	seal	1	2
22	90 31 11 030 00 90	pin	1	2
23	09 11 06 033 20-00	spout	1	10
24	90 90 03 131 00 90	top	2	2
25	09 21 02 055-00	cover	2	10
26	04 20 36 002 06-00	handle (cold)	1	10
27	09 20 36 002-00	handle	2	10
28	09 20 36 004-00	handle	8	10
29	09 20 83 006 90	handle	2	2
30	09 26 01 010 90	accessories	1	2
31	09 20 36 005-00	handle	2	10
32	04 30 30 029 00 90	fixing set	2	2