



MADISON Tub mixer for wall-mounted installation with hand shower set -  
Durabrand (23kt Gold)



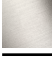


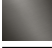
25 023 360



- 6-1/4" Projection
- Hand-held shower: COMPACT RAIN, flow rate max. 2 gpm (at 3 bar)
- Spout: Rectangular aerator
- Hand shower bracket
- Tub / shower diverter
- Flange diameter 2-3/4"
- 1/2" connection
- Center to center 6"
- Metal shower hose 49-1/4" with anti-twist device
- Spout flow rate max. 6.9 gpm

NOTE: Local building codes may require the use of an anti-scald device. Please refer to remote pressure balance valve (35 914 970 90)

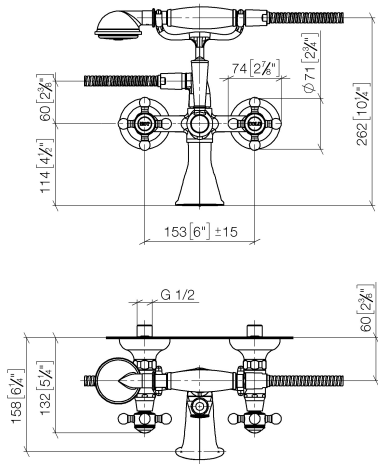
Internal backflow preventer.

	Durabrand (23kt Gold)	25 023 360-09 0010
	Chrome	25 023 360-00 0010
	Brushed Platinum	25 023 360-06 0010
	Platinum	25 023 360-08 0010
	Brushed Durabrand (23kt Gold)	25 023 360-28 0010
	Brushed Dark Platinum	25 023 360-99 0010

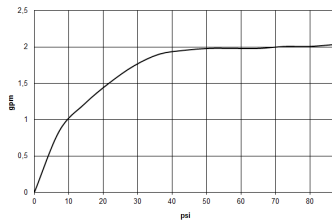


MADISON Tub mixer for wall-mounted installation with hand shower set -  
Durabronz (23kt Gold)

25 023 360  
mm [inches]



Flow rate chart



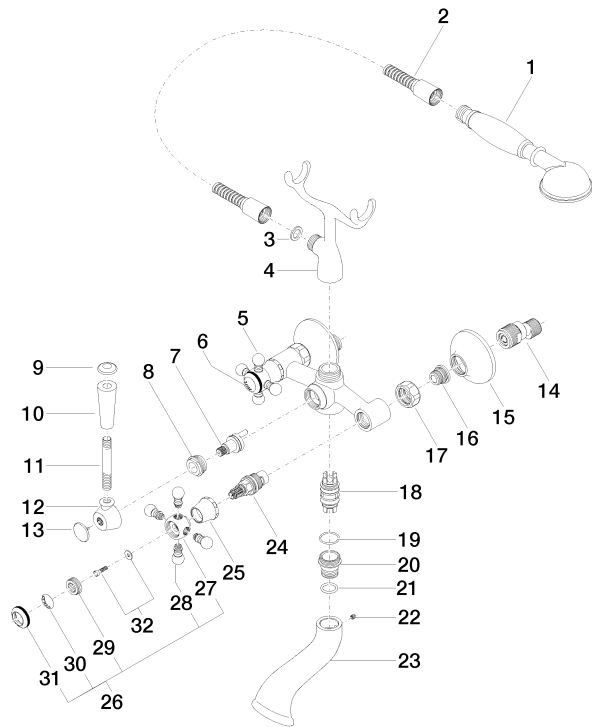
Codes & Standards

California Energy  
Commission  
(CEC)

## MADISON Tub mixer for wall-mounted installation with hand shower set - Durabronz (23kt Gold)

25 023 360

Parts for other  
finishes can be found  
here: [Chrome](#)





## MADISON Tub mixer for wall-mounted installation with hand shower set - Durabrass (23kt Gold)

25 023 360

### Spare parts list

Number	Item Number	Designation	Number of units	Lead time
1	28 002 970-09 0010	MADISON Metal hand shower with porcelain (white) handle FlowReduce - Durabrass (23kt Gold)	1	40
2	28 104 970-09	Metal shower hose 1/2" x 1/2" x 49-1/4" - Durabrass (23kt Gold)	1	40
3	90 14 20 002 00 90	seal	1	2
4	04 17 20 010 00-09	holder	1	60
5	04 20 36 002 07-09	handle ( hot )	1	40
6	09 26 01 011 90	accessories	1	2
7	90 15 01 001 00 90	diverter	1	2
8	09 23 10 007 90	nut	1	2
9	09 30 30 062-09	screw	1	40
10	11 170 370-09	MADISON Lever insert - Durabrass (23kt Gold)	1	40
11	09 28 22 013 90	pipe	1	2
12	09 18 20 011-09	base	1	40
13	09 30 30 064-09	screw	1	40
14	04 11 04 030 00 90	connection	2	2
15	09 27 39 010-09	rosette	2	40
16	04 29 05 014 00 90	nipple	2	2
17	09 23 30 010-09	nut	2	40
18	90 21 10 010 00 90	insert	1	2
19	90 14 10 056 00 90	seal	1	2
20	09 24 03 123 20 90	nipple	1	2
21	09 14 10 022 90	seal	1	2
22	90 31 11 030 00 90	pin	1	2
23	09 11 06 033 20-09	spout	1	60
24	90 90 03 131 00 90	top	2	2
25	09 21 02 055-09	cover	2	40
26	04 20 36 002 06-09	handle ( cold )	1	40
27	09 20 36 002-09	handle	2	40
28	09 20 36 004-09	handle	8	40
29	09 20 83 006 90	handle	2	2
30	09 26 01 010 90	accessories	1	2
31	09 20 36 005-09	handle	2	40
32	04 30 30 029 00 90	fixing set	2	2