

TARA Tub mixer for wall-mounted installation with hand shower set - Brushed Chrome

TARA

25 133 882 Product version up to 5/27/2021










- Spout: Round aerated stream
- Water flow rate limited to max. 5.8 gpm
- Hand-held shower: COMPACT RAIN, flow rate max. 1.8 gpm (at 3 bar)
- Hand shower set with anti-scale technology
- 9-1/2" Projection
- Tub / shower diverter
- Flanges Ø 2-1/2"
- Wall bracket with flange Ø 2"
- 1/2" connection
- Center to center 5-7/8" ± 5/8"
- Metal shower hose 49-1/4" with anti-twist device

(ADA)

NOTE: Local building codes may require the use of an anti-scald device. Please refer to remote pressure balance valve (35 914 970 90)

Internal backflow preventer.

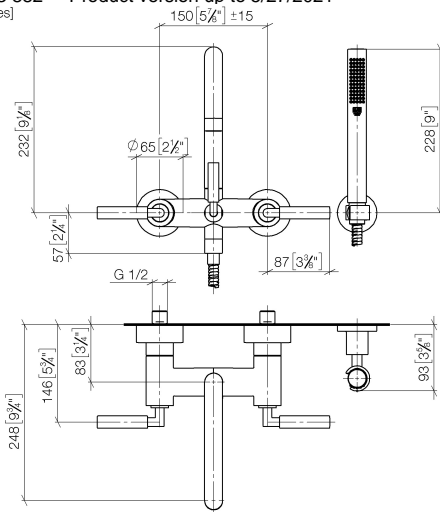
Combination with risers possible on request (special production).

	Brushed Chrome	25 133 882-93
	Chrome	25 133 882-00
	Brushed Platinum	25 133 882-06
	Platinum	25 133 882-08
	Dark Chrome	25 133 882-19
	Brushed Durabronze (23kt Gold)	25 133 882-28
	Matte Black	25 133 882-33
	Brushed Dark Brass	25 133 882-39
	Brushed Champagne (22kt Gold)	25 133 882-46
	Champagne (22kt Gold)	25 133 882-47
	Brushed Dark Platinum	25 133 882-99

TARA Tub mixer for wall-mounted installation with hand shower set - Brushed Chrome

TARA

25 133 882 Product version up to 5/27/2021
mm [inches]



Flow rate chart



Codes & Standards

ADA	DIN 4109	EN 1717	ISO 3822
-----	----------	---------	----------

Scottish Water Byelaws	UK Water Supply Regulations	Ü-Zeichen
---------------------------	--------------------------------	-----------



TARA Tub mixer for wall-mounted installation with hand shower set - Brushed Chrome

TARA

25 133 882 Product version up to 5/27/2021

Certificates and sustainability

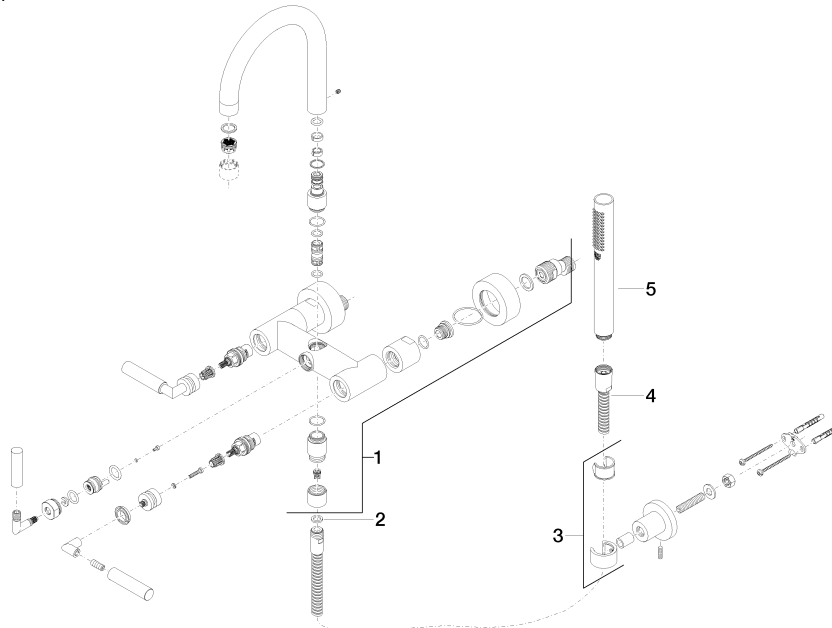
WRAS_2210	LGA_18	Belgaqua_21-026-2
-----------	--------	-------------------

TARA Tub mixer for wall-mounted installation with hand shower set - Brushed Chrome

TARA

25 133 882 Product version up to 5/27/2021

Parts for other
finishes can be found
here: [Chrome](#)



Spare parts list

Number	Item Number	Designation	Number of units	Lead time
4	90 30 02 072 00-93	Metal shower hose 1/2" x 3/8" x 49-1/4" - Brushed Chrome	1.00	20
5	28 019 979-93	Hand shower - Brushed Chrome	1.00	60
1	25 100 882-93	shower set	1.00	-
Spare part can no longer be ordered, please order the replacement item				
3	28 050 892-93	TARA Wall bracket - Brushed Chrome	1.00	20
2	90 14 20 026 00 90	seal	1.00	2