

Single-lever tub mixer with stand pipe for freestanding installation with hand shower set - Brushed Platinum

25 863 661 Product version from 10/1/2023



- Spout: Round aerated stream
 - Water flow rate limited to max. 5.2 gpm
 - Hand-held shower: COMPACT RAIN, flow rate max. 1.8 gpm (at 3 bar)
 - Baton hand shower with descaling system
 - Swiveling spout 360°
 - 11-1/8" Projection
 - Hand shower bracket
 - Integrated diverter
 - Total height 40-5/8" - 43-3/8"
 - Lower body height 22-1/4" - 25"
 - Height to aerator/spout outlet 35-3/8" - 38-1/8"
 - Flanges Ø 5-3/8"
 - Metal shower hose 49-1/4" with anti-twist device
- NOTE: Local building codes may require the use of an anti-scald device. Please refer to remote pressure balance valve (35 914 970 90) Internal backflow preventer.**

NOTE: Local building codes may require the use of an anti-scald device. Please refer to remote pressure balance valve (35 914 970 90)

Internal backflow preventer.

	Brushed Platinum	25 863 661-06
	Chrome	25 863 661-00
	Dark Chrome	25 863 661-19
	Light gold	25 863 661-26
	Brushed Light Gold	25 863 661-27
	Brushed Durabrass (23kt Gold)	25 863 661-28
	Matte Black	25 863 661-33
	Brushed Bronze	25 863 661-42
	Brushed Champagne (22kt Gold)	25 863 661-46
	Champagne (22kt Gold)	25 863 661-47
	Brushed Chrome	25 863 661-93
	Brushed Dark Platinum	25 863 661-99

Required article

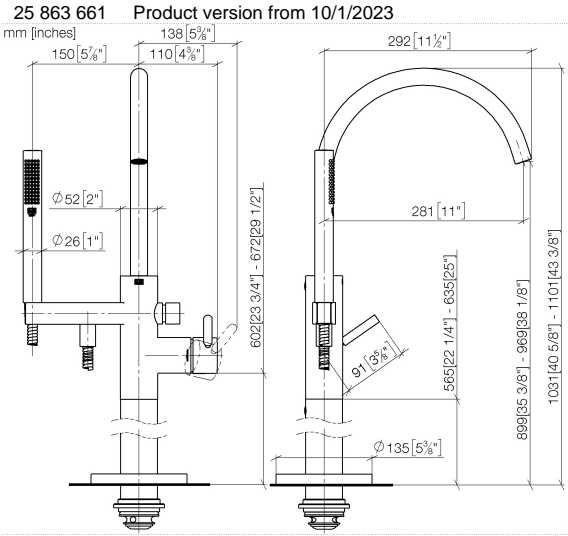


Floor mounting rough set -

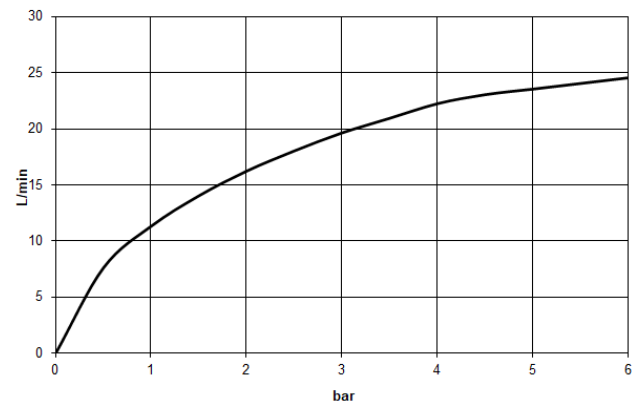
- Max. rough in depth "
- Min. rough in depth "

35 949 970-90
0010

Single-lever tub mixer with stand pipe for freestanding installation with hand shower set - Brushed Platinum



Flow rate chart



Codes & Standards

ASME A112.18.1	ASME A112.18.1/CSA B125.1	California Energy Commission (CEC)	cUPC
DIN 4109	EN 1717	ISO 3822	Scottish Water Byelaws
UK Water Supply Regulations	Ü-Zeichen		



Single-lever tub mixer with stand pipe for freestanding installation with hand shower set - Brushed Platinum

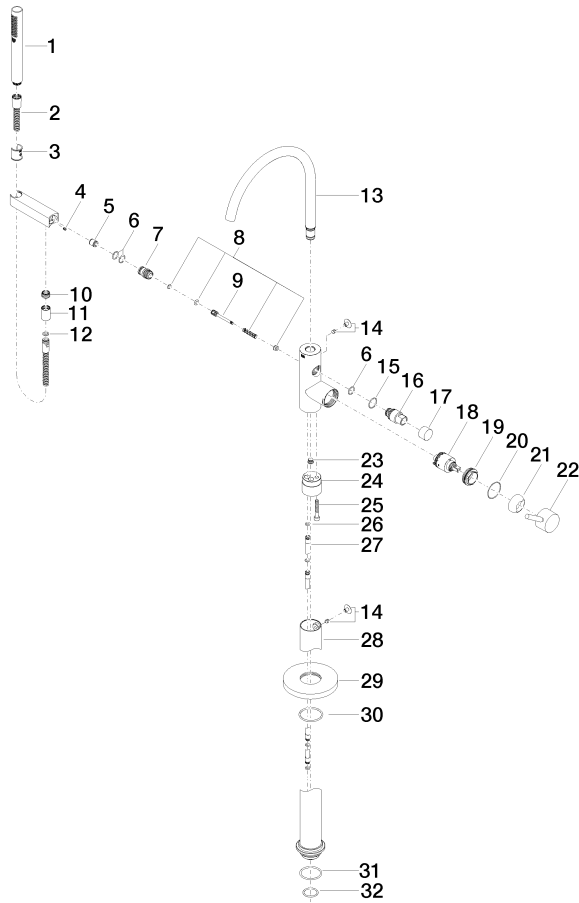
25 863 661 Product version from 10/1/2023

Certificates

IAPMO_4976	Belgaqua_19_77	WRAS_2001	LGA_29
------------	----------------	-----------	--------

Single-lever tub mixer with stand pipe for freestanding installation with hand shower set - Brushed Platinum

25 863 661 Product version from 10/1/2023



Single-lever tub mixer with stand pipe for freestanding installation with hand shower set - Brushed Platinum

25 863 661 Product version from 10/1/2023

Spare parts list

Number	Item Number	Designation	Number of units	Lead time
1	90 12 11 140 41-06	shower	1	10
2	90 30 02 072 00-06	Metal shower hose 1/2" x 3/8" x 49-1/4" - Brushed Platinum	1	10
3	09 18 40 118 90	sleeve	1	2
4	09 31 11 058 90	pin	1	2
5	90 23 01 141 00 90	back-flow preventer	1	2
6	90 14 10 010 00 90	seal	3	2
7	09 24 03 153 20-06	nipple	1	60
8	90 16 02 023 00 90	spring	1	2
9	09 31 09 102 20-06	pull-rod	1	-
Spare part can no longer be ordered, please order the replacement item				
10	09 24 03 069 90	nipple	1	2
11	90 21 02 069 00-06	cover	1	10
12	90 14 20 026 00 90	seal	1	2
13	90 28 22 327 01-06	spout	1	10
14	04 31 20 036 00 90	plug	2	2
15	09 14 10 112 90	seal	1	2
16	09 21 34 081 20-06	nipple	1	10
17	09 20 88 002-06	handle	1	10
18	90 15 05 039 00 90	cartridge	1	2
19	09 24 04 298 90	nut	1	2
20	09 14 10 037 90	seal	1	2
21	09 28 30 036-06	cover	1	10
22	90 20 66 005 00-06	handle	1	10
23	04 31 20 039 11 90	plug	1	2
24	09 24 03 152 20-06	adaptor	1	-
Spare part can no longer be ordered, please order the replacement item				
25	09 30 30 111 90	screw	1	2
26	09 14 10 139 90	seal	2	2
27	04 28 22 025 00 90	connection	2	2
28	04 28 22 030 00-06	pipe	1	10
29	09 27 88 007-06	rosette	1	10
30	90 14 10 129 00 90	seal	1	2
31	09 14 10 084 90	seal	1	2
32	09 14 10 018 90	seal	1	2