

Single-lever tub mixer with stand pipe for freestanding installation with hand shower set - Brushed Dark Brass

SERIES SPECIFIC



25 863 661 Product version from 10/1/2023



- Spout: Round aerated stream
- Water flow rate limited to max. 5.2 gpm
- Hand-held shower: COMPACT RAIN, flow rate max. 1.8 gpm (at 3 bar)
- Baton hand shower with descaling system
- Swiveling spout 360°
- 11-1/8" Projection
- Hand shower bracket
- Integrated diverter
- Total height 40-5/8" - 43-3/8"
- Lower body height 22-1/4" - 25"
- Height to aerator/spout outlet 35-3/8" - 38-1/8"
- Flanges Ø 5-3/8"
- Metal shower hose 49-1/4" with anti-twist device

NOTE: Local building codes may require the use of an anti-scald device. Please refer to remote pressure balance valve (35 914 970 90)

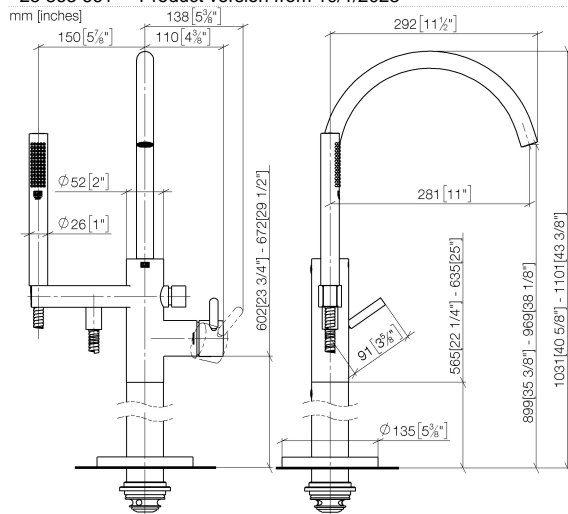
Internal backflow preventer.

	Brushed Dark Brass	25 863 661-39
	Chrome	25 863 661-00
	Brushed Platinum	25 863 661-06
	Dark Chrome	25 863 661-19
	Light gold	25 863 661-26
	Brushed Light Gold	25 863 661-27
	Brushed Durabrass (23kt Gold)	25 863 661-28
	Matte Black	25 863 661-33
	Brushed Bronze	25 863 661-42
	Brushed Champagne (22kt Gold)	25 863 661-46
	Champagne (22kt Gold)	25 863 661-47
	Brushed Chrome	25 863 661-93
	Brushed Dark Platinum	25 863 661-99

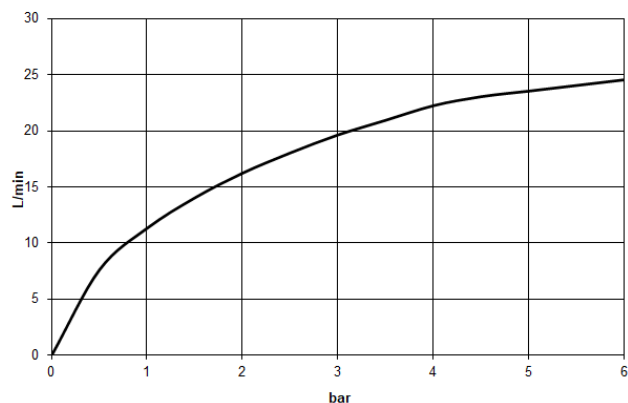
Single-lever tub mixer with stand pipe for freestanding installation with hand shower set - Brushed Dark Brass

SERIES SPECIFIC

25 863 661 Product version from 10/1/2023



Flow rate chart



Codes & Standards

California Energy
Commission
(CEC)

Scottish Water
Byelaws

UK Water Supply
Regulations



Single-lever tub mixer with stand pipe for freestanding installation with hand shower set - Brushed Dark Brass

SERIES SPECIFIC

25 863 661 Product version from 10/1/2023

Certificates and sustainability

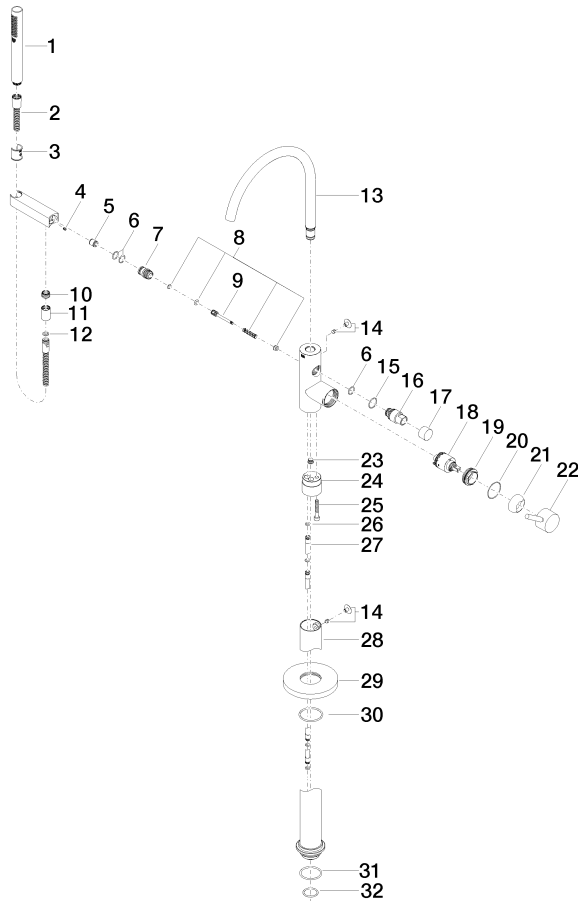
WRAS_250502

Single-lever tub mixer with stand pipe for freestanding installation with hand shower set - Brushed Dark Brass

SERIES SPECIFIC

25 863 661 Product version from 10/1/2023

Parts for other
finishes can be found
here: [Chrome](#)



Single-lever tub mixer with stand pipe for freestanding installation with hand shower set - Brushed Dark Brass

SERIES SPECIFIC

25 863 661 Product version from 10/1/2023

Spare parts list

Number	Item Number	Designation	Number of units	Lead time
4	09 31 11 058 90	pin	1.00	2
30	90 14 10 129 00 90	seal	1.00	2
7	09 24 03 153 20-39	nipple	1.00	-
Spare part can no longer be ordered, please order the replacement item				
16	09 21 34 081 20-39	nipple	1.00	60
17	09 20 88 002-39	handle	1.00	60
2	90 30 02 072 00-39	hose	1.00	30
31	09 14 10 084 90	seal	1.00	2
3	09 18 40 118 90	sleeve	1.00	2
13	90 28 22 327 01-39	spout	1.00	30
1	90 12 11 140 41-39	shower	1.00	30
5	90 23 01 141 00 90	back-flow preventer	1.00	2
12	90 14 20 026 00 90	seal	1.00	2
20	09 14 10 037 90	seal	1.00	2
25	09 30 30 111 90	screw	1.00	2
29	09 27 88 007-39	rosette	1.00	60
21	09 28 30 036-39	cover	1.00	60
18	90 15 05 039 00 90	cartridge	1.00	2
22	90 20 66 005 00-39	handle	1.00	30
26	09 14 10 139 90	seal	2.00	2
27	04 28 22 025 00 90	connection	2.00	2
11	90 21 02 069 00-39	cover	1.00	30
19	09 24 04 298 90	nut	1.00	2
24	09 24 03 152 20-39	adaptor	1.00	-
Spare part can no longer be ordered, please order the replacement item				
28	04 28 22 030 00-39	pipe	1.00	60
23	04 31 20 039 11 90	plug	1.00	2
8	90 16 02 023 00 90	spring	1.00	2
32	09 14 10 018 90	seal	1.00	2
10	09 24 03 069 90	nipple	1.00	2
9	09 31 09 102 20-39	pull-rod	1.00	-
Spare part can no longer be ordered, please order the replacement item				
14	04 31 20 036 00 90	plug	2.00	2
15	09 14 10 112 90	seal	1.00	2
6	90 14 10 010 00 90	seal	3.00	2