

## VAIA Single-lever tub mixer with stand pipe for freestanding installation with hand shower set - Brushed Durabronze (23kt Gold)

25 863 809



- Spout: Round aerated stream
  - Water flow rate limited to max. 6.5 gpm
  - Hand-held shower: COMPACT RAIN, flow rate max. 1.8 gpm (at 3 bar)
  - Baton hand shower with descaling system
  - 11-1/8" Projection
  - Swiveling spout 360°
  - Integrated diverter
  - Total height 41-5/8" - 44-3/8"
  - Hand shower bracket
  - Lower body height 22-1/4" - 25"
  - Height to aerator/spout outlet 36-3/8" - 39-1/8"
  - Flanges Ø 5-3/8"
  - Metal shower hose 49-1/4" with anti-twist device
- NOTE: Local building codes may require the use of an anti-scald device. Please refer to remote pressure balance valve (35 914 970 90) Internal backflow preventer.**

NOTE: Local building codes may require the use of an anti-scald device. Please refer to remote pressure balance valve (35 914 970 90)

Internal backflow preventer.

	Brushed Durabronze (23kt Gold)	25 863 809-28
	Chrome	25 863 809-00
	Brushed Platinum	25 863 809-06
	Platinum	25 863 809-08
	Dark Chrome	25 863 809-19
	Brushed Bronze	25 863 809-42
	Brushed Champagne (22kt Gold)	25 863 809-46
	Champagne (22kt Gold)	25 863 809-47
	Brushed Dark Platinum	25 863 809-99

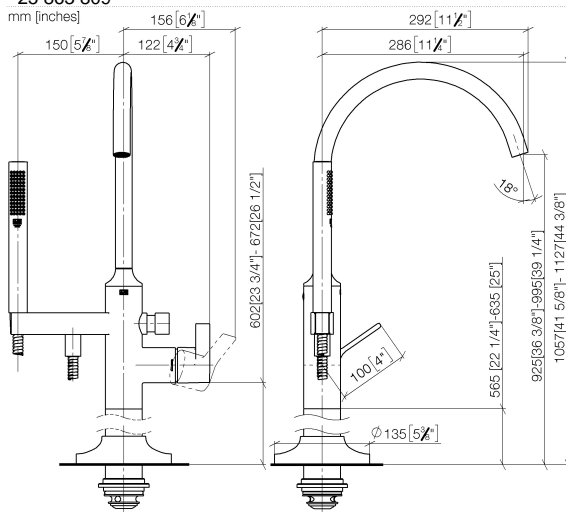
### Required article



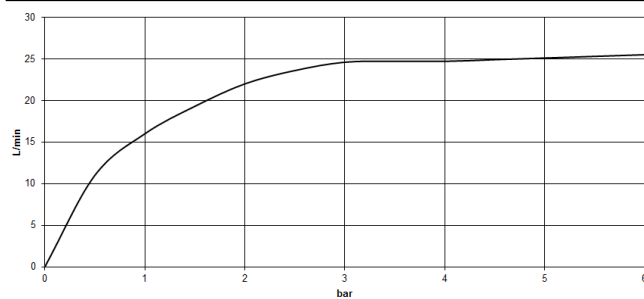
- Floor mounting rough set -** 35 949 970-90
- Max. rough in depth "
  - Min. rough in depth "

## VAIA Single-lever tub mixer with stand pipe for freestanding installation with hand shower set - Brushed Durabron (23kt Gold)

25 863 809



Flow rate chart



### Codes & Standards

ASME A112.18.1/CSA B125.1	California Energy Commission (CEC)	DIN 4109	EN 1717
ISO 3822	Scottish Water Byelaws	UK Water Supply Regulations	Ü-Zeichen



VAIA Single-lever tub mixer with stand pipe for freestanding installation with hand shower set - Brushed Durabronss (23kt Gold)

---

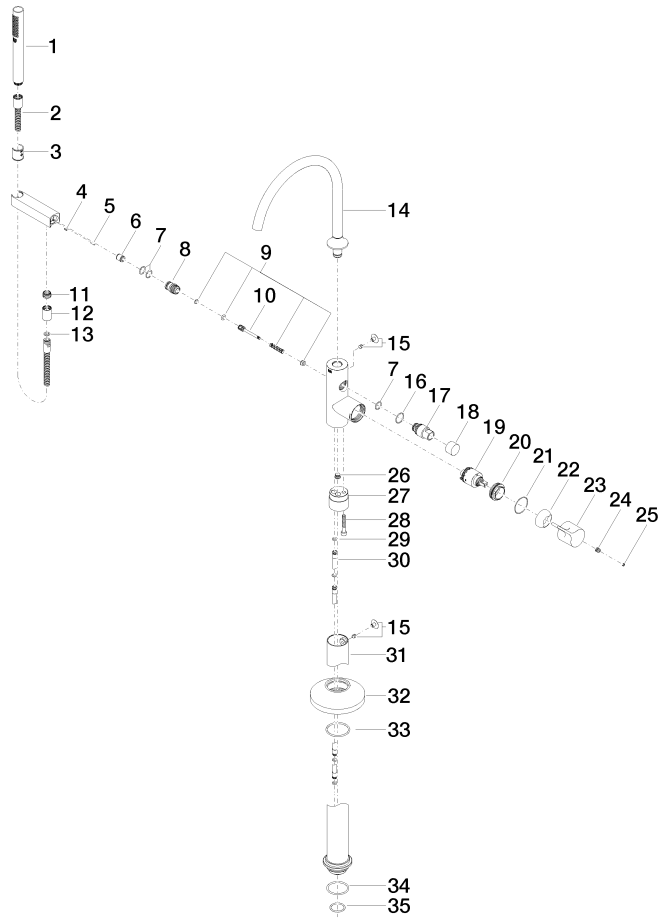
25 863 809  
Certificates

---

Belgaqua_19_77	WRAS_2001	LGA_29	Belgaqua_24-003-2
----------------	-----------	--------	-------------------

**VAIA Single-lever tub mixer with stand pipe for freestanding installation with hand shower set - Brushed Durabronz (23kt Gold)**

25 863 809





## VAIA Single-lever tub mixer with stand pipe for freestanding installation with hand shower set - Brushed Durabross (23kt Gold)

25 863 809

### Spare parts list

Number	Item Number	Designation	Number of units	Lead time
1	90 12 11 140 41-28	shower	1	20
2	90 30 02 072 00-28	Metal shower hose 1/2" x 3/8" x 49-1/4" - Brushed Durabross (23kt Gold)	1	20
3	09 18 40 118 90	sleeve	1	2
4	09 31 11 058 90	pin	1	2
5	09 31 11 040 90	pin	1	2
6	90 23 01 141 00 90	back-flow preventer	1	2
7	90 14 10 010 00 90	seal	3	2
8	09 24 03 153 20-28	nipple	1	-
Spare part can no longer be ordered, please order the replacement item				
9	90 16 02 023 00 90	spring	1	2
10	09 31 09 102 20-28	pull-rod	1	-
Spare part can no longer be ordered, please order the replacement item				
11	09 24 03 069 90	nipple	1	2
12	90 21 02 069 00-28	cover	1	20
13	90 14 20 026 00 90	seal	1	2
14	90 28 22 327 00-28	spout	1	20
15	04 31 20 036 00 90	plug	2	2
16	09 14 10 112 90	seal	1	2
17	09 21 34 081 20-28	nipple	1	20
18	09 20 88 002-28	handle	1	20
19	90 15 05 039 00 90	cartridge	1	2
20	09 24 04 298 90	nut	1	2
21	09 14 10 037 90	seal	1	2
22	09 28 30 036-28	cover	1	20
23	09 20 80 022-28	handle	1	20
24	90 31 11 030 00 90	pin	1	2
25	90 31 20 087 00-28	plug	1	20
26	04 31 20 039 11 90	plug	1	2
27	09 24 03 152 20-28	adaptor	1	-
Spare part can no longer be ordered, please order the replacement item				
28	09 30 30 111 90	screw	1	2
29	09 14 10 139 90	seal	2	2
30	04 28 22 025 00 90	connection	2	2
31	04 28 22 030 00-28	pipe	1	20
32	09 27 80 022-28	rosette	1	20
33	90 14 10 129 00 90	seal	1	2
34	09 14 10 084 90	seal	1	2
35	09 14 10 018 90	seal	1	2