

VAIA Single-lever tub mixer with stand pipe for freestanding installation with hand shower set - Brushed Bronze

VAIA

25 863 809 Product version from 4/1/2025



- Spout: Round aerated stream
 - Water flow rate limited to max. 6.5 gpm
 - Hand-held shower: COMPACT RAIN, flow rate max. 1.8 gpm (at 3 bar)
 - Baton hand shower with descaling system
 - 11-1/4" Projection
 - Swiveling spout 360°
 - Integrated diverter
 - Total height 41-5/8" - 44-3/8"
 - Hand shower bracket
 - Lower body height 22-1/4" - 25"
 - Height to aerator/spout outlet 36-3/8" - 39-1/8"
 - Flanges Ø 5-3/8"
 - Metal shower hose 49-1/4" with anti-twist device
- NOTE: Local building codes may require the use of an anti-scald device. Please refer to remote pressure balance valve (35 914 970 90) Internal backflow preventer.**

NOTE: Local building codes may require the use of an anti-scald device. Please refer to remote pressure balance valve (35 914 970 90)

Internal backflow preventer.

	Brushed Bronze	25 863 809-42
	Chrome	25 863 809-00
	Brushed Platinum	25 863 809-06
	Platinum	25 863 809-08
	Dark Chrome	25 863 809-19
	Brushed Durabronze (23kt Gold)	25 863 809-28
	Brushed Dark Brass	25 863 809-39
	Brushed Champagne (22kt Gold)	25 863 809-46
	Champagne (22kt Gold)	25 863 809-47
	Brushed Dark Platinum	25 863 809-99

Required article



Floor mounting rough set -

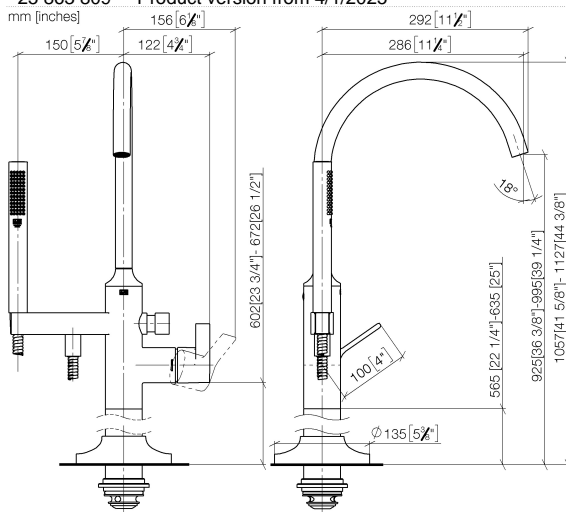
- Min. rough in depth 3-1/8"
- Max. rough in depth 5-7/8"

35 949 970-90
0010

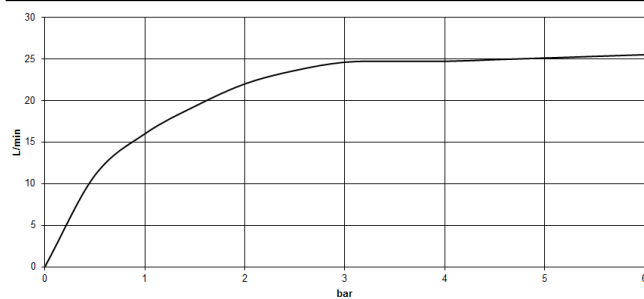
VAIA Single-lever tub mixer with stand pipe for freestanding installation with hand shower set - Brushed Bronze

VAIA

25 863 809 Product version from 4/1/2025



Flow rate chart



Codes & Standards

ASME A112.18.1	California Energy Commission (CEC)	cUPC	EN 1717
Scottish Water Byelaws	UK Water Supply Regulations		



VAIA Single-lever tub mixer with stand pipe for freestanding installation with hand shower set - Brushed Bronze

VAIA

25 863 809 Product version from 4/1/2025

Certificates and sustainability

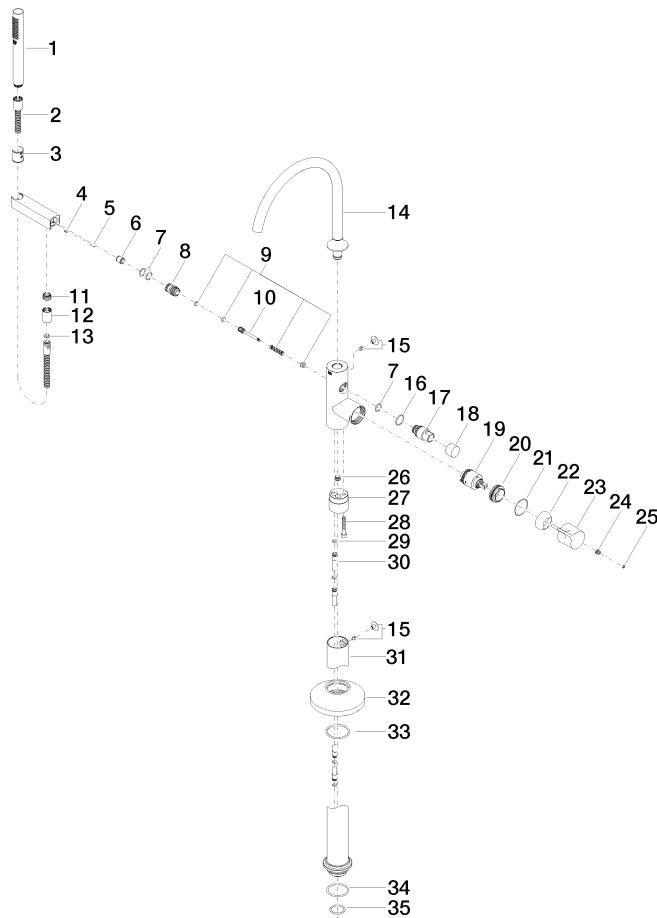
IAPMO_4976

Belgaqua_24-003-2 WRAS_250502

VAIA Single-lever tub mixer with stand pipe for freestanding installation with hand shower set - Brushed Bronze

VAIA

25 863 809 Product version from 4/1/2025



VAIA Single-lever tub mixer with stand pipe for freestanding installation with hand shower set - Brushed Bronze

VAIA

25 863 809 Product version from 4/1/2025

Spare parts list

Number	Item Number	Designation	Number of units	Lead time
32	09 27 80 022-42	rosette	1.00	60
29	09 14 10 139 90	seal	2.00	2
10	09 31 09 102 20-42	pull-rod	1.00	-
Spare part can no longer be ordered, please order the replacement item				
13	90 14 20 026 00 90	seal	1.00	2
27	09 24 03 152 20-42	adaptor	1.00	-
Spare part can no longer be ordered, please order the replacement item				
5	09 31 11 040 90	pin	1.00	2
21	09 14 10 037 90	seal	1.00	2
24	90 31 11 030 00 90	pin	1.00	2
33	90 14 10 129 00 90	seal	1.00	2
28	09 30 30 111 90	screw	1.00	2
17	09 21 34 081 20-42	nipple	1.00	60
8	09 24 03 153 20-42	nipple	1.00	-
Spare part can no longer be ordered, please order the replacement item				
15	04 31 20 036 00 90	plug	2.00	2
16	09 14 10 112 90	seal	1.00	2
30	04 28 22 025 00 90	connection	2.00	2
14	90 28 22 327 00-42	spout	1.00	30
3	09 18 40 118 90	sleeve	1.00	2
18	09 20 88 002-42	handle	1.00	60
22	09 28 30 036-42	cover	1.00	60
2	90 30 02 072 00-42	hose	1.00	30
34	09 14 10 084 90	seal	1.00	2
35	09 14 10 018 90	seal	1.00	2
26	04 31 20 039 11 90	plug	1.00	2
6	90 23 01 141 00 90	back-flow preventer	1.00	2
9	90 16 02 023 00 90	spring	1.00	2
12	90 21 02 069 00-42	cover	1.00	30
20	09 24 04 298 90	nut	1.00	2
19	90 15 05 039 00 90	cartridge	1.00	2
23	09 20 80 022-42	handle	1.00	60
31	04 28 22 030 00-42	pipe	1.00	60
4	09 31 11 058 90	pin	1.00	2
25	90 31 20 087 00-42	plug	1.00	30
7	90 14 10 010 00 90	seal	3.00	2
11	09 24 03 069 90	nipple	1.00	2
1	90 12 11 140 41-42	shower	1.00	30