

VAIA Single-lever tub mixer with stand pipe for freestanding installation with hand shower set - Brushed Champagne (22kt Gold)

VAIA

25 863 809



- Spout: Round aerated stream
 - Water flow rate limited to max. 6.5 gpm
 - Hand-held shower: COMPACT RAIN, flow rate max. 1.8 gpm (at 3 bar)
 - Baton hand shower with descaling system
 - 11-1/4" Projection
 - Swiveling spout 360°
 - Integrated diverter
 - Total height 41-5/8" - 44-3/8"
 - Hand shower bracket
 - Lower body height 22-1/4" - 25"
 - Height to aerator/spout outlet 36-3/8" - 39-1/8"
 - Flanges Ø 5-3/8"
 - Metal shower hose 49-1/4" with anti-twist device
- NOTE: Local building codes may require the use of an anti-scald device. Please refer to remote pressure balance valve (35 914 970 90) Internal backflow preventer.**

NOTE: Local building codes may require the use of an anti-scald device. Please refer to remote pressure balance valve (35 914 970 90) Internal backflow preventer.

| | | |
|--|--------------------------------|---------------|
| | Brushed Champagne (22kt Gold) | 25 863 809-46 |
| | Chrome | 25 863 809-00 |
| | Brushed Platinum | 25 863 809-06 |
| | Platinum | 25 863 809-08 |
| | Dark Chrome | 25 863 809-19 |
| | Brushed Durabronze (23kt Gold) | 25 863 809-28 |
| | Brushed Bronze | 25 863 809-42 |
| | Champagne (22kt Gold) | 25 863 809-47 |
| | Brushed Dark Platinum | 25 863 809-99 |

Required article



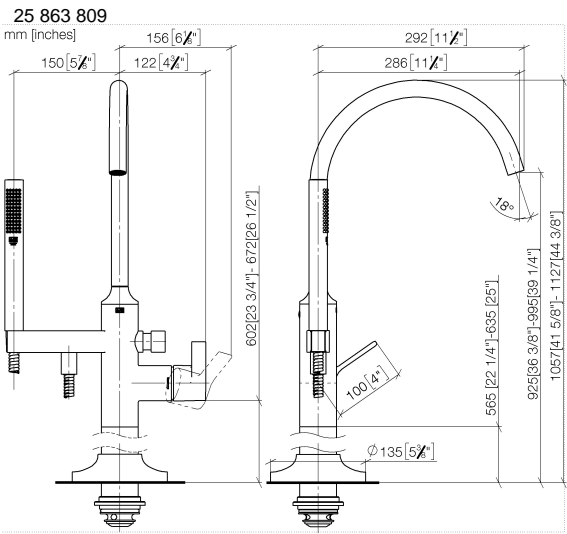
- Floor mounting rough set -**
- Max. rough in depth 5-7/8"
 - Min. rough in depth 3-1/8"

35 949 970-90
0010

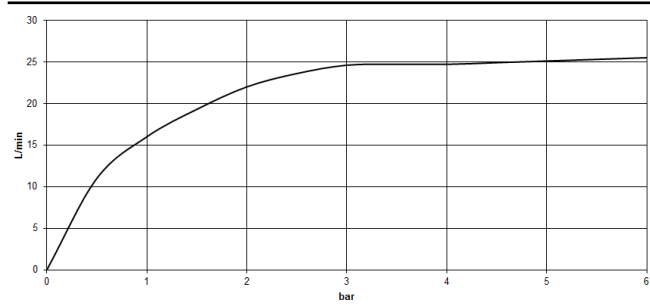


VAIA Single-lever tub mixer with stand pipe for freestanding installation with hand shower set - Brushed Champagne (22kt Gold)

VAIA



Flow rate chart



Codes & Standards

| | | | |
|----------------|------------------------------------|------|---------|
| ASME A112.18.1 | California Energy Commission (CEC) | cUPC | EN 1717 |
|----------------|------------------------------------|------|---------|



VAIA Single-lever tub mixer with stand pipe for freestanding installation with
hand shower set - Brushed Champagne (22kt Gold)

VAIA

25 863 809

Certificates and sustainability

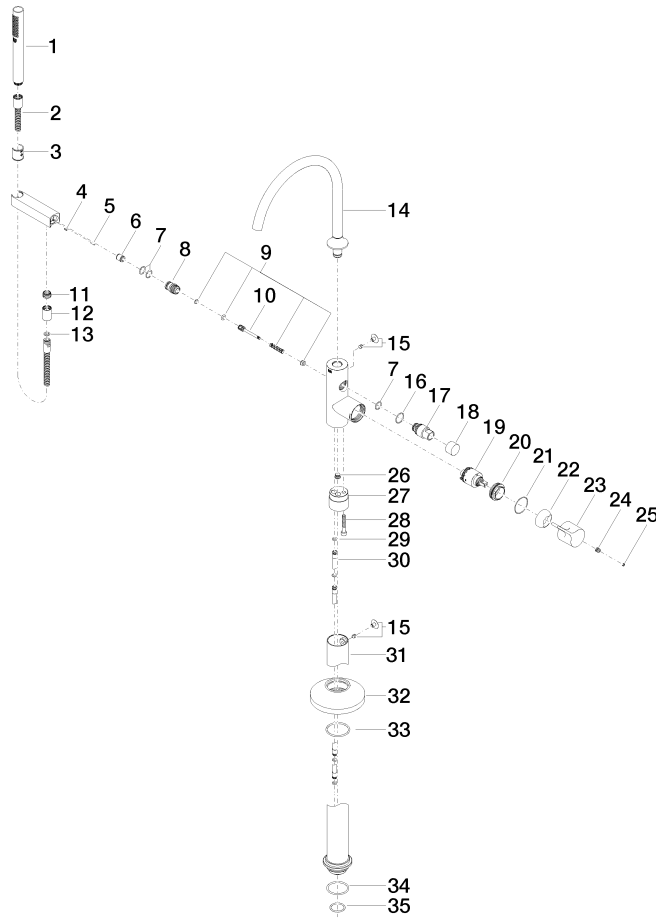
IAPMO_4976

Belgaqua_24-003-2

VAIA Single-lever tub mixer with stand pipe for freestanding installation with hand shower set - Brushed Champagne (22kt Gold)

VAIA

25 863 809





VAIA Single-lever tub mixer with stand pipe for freestanding installation with hand shower set - Brushed Champagne (22kt Gold)

VAIA

25 863 809

Spare parts list

| Number | Item Number | Designation | Number of units | Lead time |
|--|--------------------|---|-----------------|-----------|
| 10 | 09 31 09 102 20-46 | pull-rod | 1.00 | - |
| Spare part can no longer be ordered, please order the replacement item | | | | |
| 3 | 09 18 40 118 90 | sleeve | 1.00 | 2 |
| 4 | 09 31 11 058 90 | pin | 1.00 | 2 |
| 20 | 09 24 04 298 90 | nut | 1.00 | 2 |
| 29 | 09 14 10 139 90 | seal | 2.00 | 2 |
| 22 | 09 28 30 036-46 | cover | 1.00 | 30 |
| 27 | 09 24 03 152 20-46 | adaptor | 1.00 | - |
| Spare part can no longer be ordered, please order the replacement item | | | | |
| 17 | 09 21 34 081 20-46 | nipple | 1.00 | 30 |
| 5 | 09 31 11 040 90 | pin | 1.00 | 2 |
| 35 | 09 14 10 018 90 | seal | 1.00 | 2 |
| 28 | 09 30 30 111 90 | screw | 1.00 | 2 |
| 21 | 09 14 10 037 90 | seal | 1.00 | 2 |
| 11 | 09 24 03 069 90 | nipple | 1.00 | 2 |
| 16 | 09 14 10 112 90 | seal | 1.00 | 2 |
| 2 | 90 30 02 072 00-46 | Metal shower hose 1/2" x 3/8" x 49-1/4" - Brushed Champagne (22kt Gold) | 1.00 | 30 |
| 15 | 04 31 20 036 00 90 | plug | 2.00 | 2 |
| 34 | 09 14 10 084 90 | seal | 1.00 | 2 |
| 32 | 09 27 80 022-46 | rosette | 1.00 | 30 |
| 8 | 09 24 03 153 20-46 | nipple | 1.00 | - |
| Spare part can no longer be ordered, please order the replacement item | | | | |
| 19 | 90 15 05 039 00 90 | cartridge | 1.00 | 2 |
| 30 | 04 28 22 025 00 90 | connection | 2.00 | 2 |
| 14 | 90 28 22 327 00-46 | spout | 1.00 | 30 |
| 25 | 90 31 20 087 00-46 | plug | 1.00 | 30 |
| 18 | 09 20 88 002-46 | handle | 1.00 | 30 |
| 23 | 09 20 80 022-46 | handle | 1.00 | 30 |
| 31 | 04 28 22 030 00-46 | pipe | 1.00 | 30 |
| 9 | 90 16 02 023 00 90 | spring | 1.00 | 2 |
| 6 | 90 23 01 141 00 90 | back-flow preventer | 1.00 | 2 |
| 26 | 04 31 20 039 11 90 | plug | 1.00 | 2 |
| 24 | 90 31 11 030 00 90 | pin | 1.00 | 2 |
| 12 | 90 21 02 069 00-46 | cover | 1.00 | 30 |
| 7 | 90 14 10 010 00 90 | seal | 3.00 | 2 |
| 33 | 90 14 10 129 00 90 | seal | 1.00 | 2 |
| 13 | 90 14 20 026 00 90 | seal | 1.00 | 2 |
| 1 | 90 12 11 140 41-46 | shower | 1.00 | 30 |