



CYO Single-lever tub mixer with stand pipe for freestanding installation with hand shower set - Dark Chrome

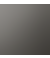



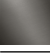
CYO

25 863 811



- 9-3/4" Projection
- Rectangular aerated stream
- Spout flow rate max. 7 gpm
- Hand-held shower: COMPACT RAIN, flow rate max. 1.8 gpm (at 3 bar)
- Baton hand shower with descaling system
- Hand shower bracket
- Integrated diverter
- Total height 38-5/8" - 41-3/8"
- Lower body height 23-1/2" - 26-1/4"
- Height to aerator/spout outlet 35-1/2" - 38-1/4"
- Flange 5-1/8" x 5-1/8"
- Metal shower hose 49-1/4" with anti-twist device

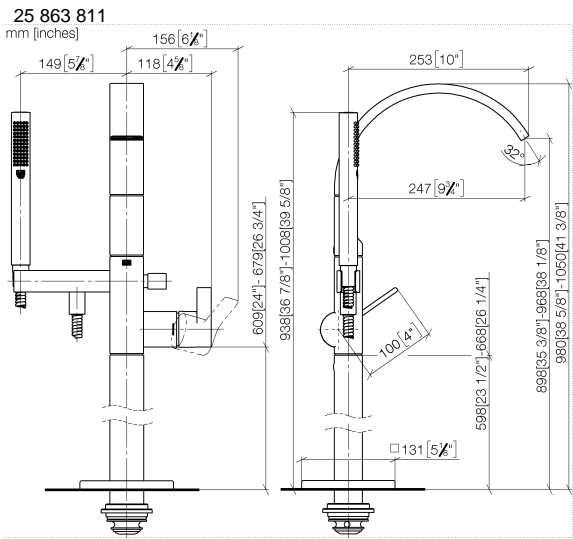
NOTE: Local building codes may require the use of an anti-scald device. Please refer to remote pressure balance valve (35 914 970 90)

	Dark Chrome	25 863 811-19
	Chrome	25 863 811-00
	Brushed Platinum	25 863 811-06
	Brushed Durabrass (23kt Gold)	25 863 811-28
	Brushed Dark Platinum	25 863 811-99

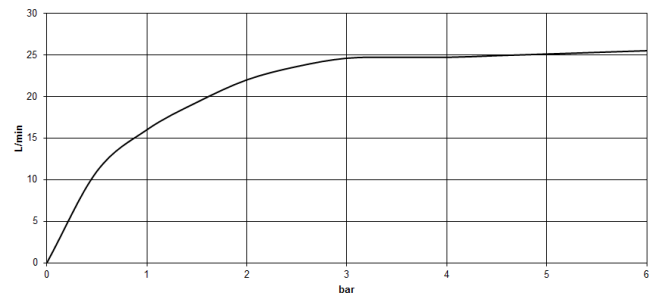


CYO Single-lever tub mixer with stand pipe for freestanding installation with hand shower set - Dark Chrome

CYO



Flow rate chart



Codes & Standards

ASME A112.18.1	California Energy Commission (CEC)	cUPC
----------------	------------------------------------	------



## CYO Single-lever tub mixer with stand pipe for freestanding installation with hand shower set - Dark Chrome

---

CYO

25 863 811

Certificates and sustainability

---

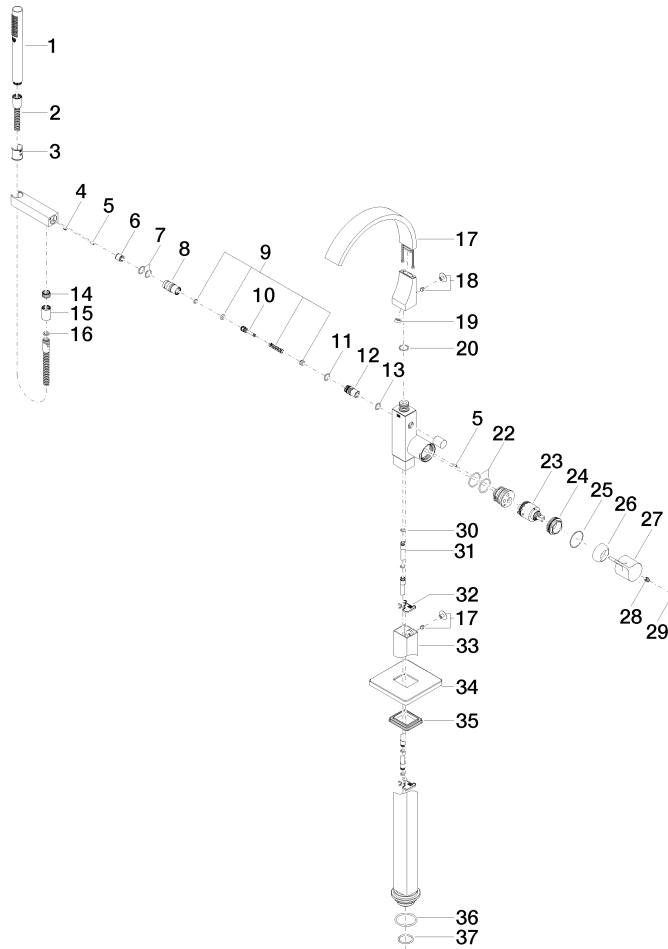
IAPMO\_4976

# CYO Single-lever tub mixer with stand pipe for freestanding installation with hand shower set - Dark Chrome

CYO

25 863 811

Parts for other  
finishes can be found  
here: [Chrome](#)





## CYO Single-lever tub mixer with stand pipe for freestanding installation with hand shower set - Dark Chrome

CYO

25 863 811

### Spare parts list

Number	Item Number	Designation	Number of units	Lead time
19	09 23 01 057 90	flow reducer	1.00	2
10	09 31 09 094 20-19	pull-rod	1.00	60
7	90 14 10 010 00 90	seal	2.00	2
18	04 31 20 034 00 90	plug	2.00	2
15	90 21 02 069 00-19	cover	1.00	20
6	90 23 01 141 00 90	back-flow preventer	1.00	2
16	90 14 20 026 00 90	seal	1.00	2
5	09 31 11 040 90	pin	3.00	2
14	09 24 03 069 90	nipple	1.00	2
2	90 30 02 072 00-19	Metal shower hose 1/2" x 3/8" x 49-1/4" - Dark Chrome	1.00	20
9	90 16 02 023 00 90	spring	1.00	2
3	09 18 40 118 90	sleeve	1.00	2
11	90 14 10 055 00 90	seal	1.00	2
17	90 11 70 011 00-19	spout	1.00	20
4	09 31 11 058 90	pin	1.00	2
12	09 21 34 080-19	nipple	1.00	60
20	09 14 10 031 90	seal	2.00	2
13	90 14 10 033 00 90	seal	1.00	2
1	90 12 11 140 41-19	shower	1.00	20
31	04 28 22 025 00 90	connection	2.00	2
28	90 31 11 030 00 90	pin	1.00	2
37	09 14 10 018 90	seal	1.00	2
35	09 14 03 107 90	seal	1.00	2
34	09 27 71 011-19	rosette	1.00	60
27	09 20 80 022-19	handle	1.00	60
36	09 14 10 084 90	seal	1.00	2
23	90 15 05 039 00 90	cartridge	1.00	2
25	09 14 10 037 90	seal	1.00	2
8	09 24 03 130-19	nipple	1.00	-
Spare part can no longer be ordered, please order the replacement item				
30	09 14 10 139 90	seal	4.00	2
33	04 28 22 024 00-19	pipe	1.00	60
22	09 14 10 148 90	seal	1.00	2
24	09 24 04 298 90	nut	1.00	2
32	09 20 93 051 90	holder	2.00	2
26	09 28 30 036-19	cover	1.00	20
29	90 31 20 087 00-19	plug	1.00	20