



CYO Single-lever tub mixer with stand pipe for freestanding installation with hand shower set - Brushed Durabronss (23kt Gold)

CYO

25 863 811

- 9-3/4" Projection
- Rectangular aerated stream
- Spout flow rate max. 7 gpm
- Hand-held shower: COMPACT RAIN, flow rate max. 1.8 gpm (at 3 bar)
- Baton hand shower with descaling system
- Hand shower bracket
- Integrated diverter
- Total height 38-5/8" - 41-3/8"
- Lower body height 23-1/2" - 26-1/4"
- Height to aerator/spout outlet 35-1/2" - 38-1/4"
- Flange 5-1/8" x 5-1/8"
- Metal shower hose 49-1/4" with anti-twist device

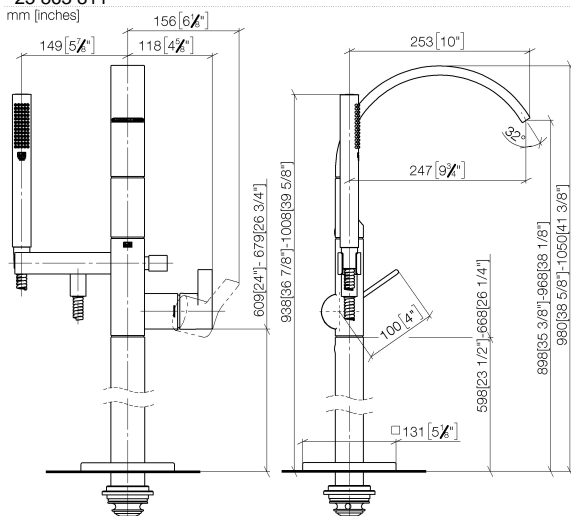
NOTE: Local building codes may require the use of an anti-scald device. Please refer to remote pressure balance valve (35 914 970 90)

|  |                                |               |
|--|--------------------------------|---------------|
|  | Brushed Durabronss (23kt Gold) | 25 863 811-28 |
|  | Chrome                         | 25 863 811-00 |
|  | Brushed Platinum               | 25 863 811-06 |
|  | Dark Chrome                    | 25 863 811-19 |
|  | Brushed Dark Platinum          | 25 863 811-99 |

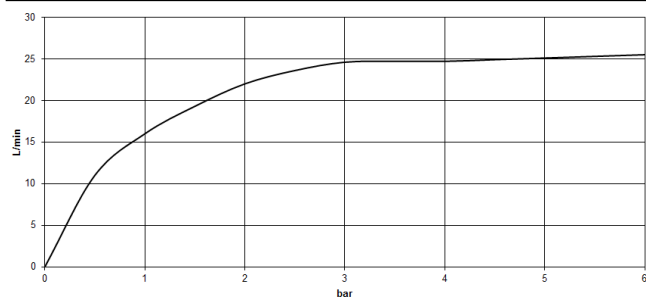
# CYO Single-lever tub mixer with stand pipe for freestanding installation with hand shower set - Brushed Durabron (23kt Gold)

CYO

25 863 811  
mm [inches]



Flow rate chart



## Codes & Standards

California Energy  
Commission  
(CEC)

DIN 4109

EN 1717

ISO 3822

Scottish Water  
Byelaws

UK Water Supply  
Regulations

Ü-Zeichen



CYO Single-lever tub mixer with stand pipe for freestanding installation with  
hand shower set - Brushed Durabron (23kt Gold)

CYO

25 863 811  
Certificates and sustainability

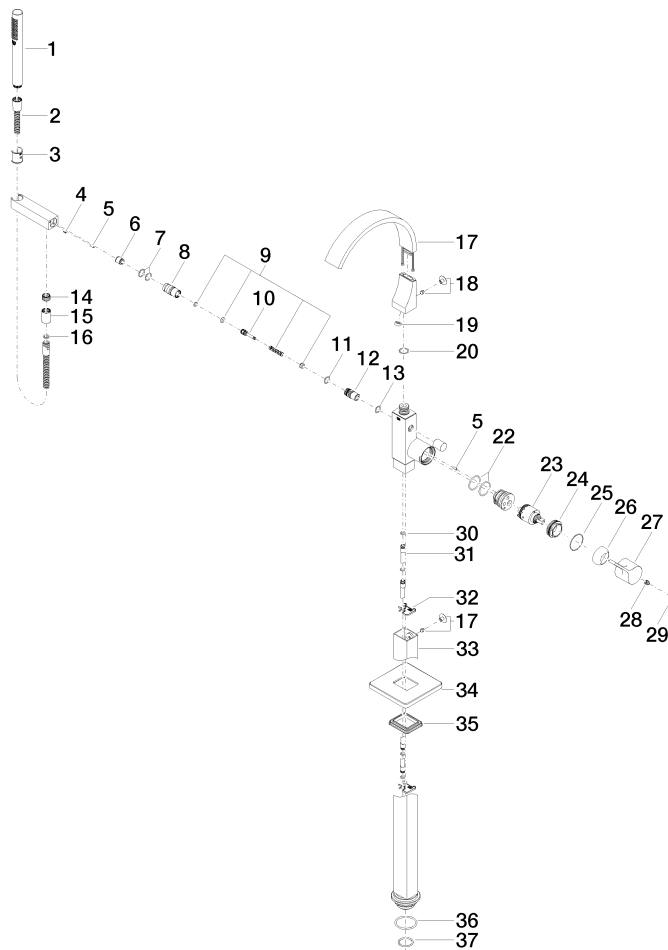
LGA\_38WRAS\_2201Belgaqua\_21-376-2

**CYO Single-lever tub mixer with stand pipe for freestanding installation with hand shower set - Brushed Durabronz (23kt Gold)**

CYO

25 863 811

Parts for other  
finishes can be found  
here: [Chrome](#)







## CYO Single-lever tub mixer with stand pipe for freestanding installation with hand shower set - Brushed Durabron (23kt Gold)

CYO

25 863 811

### Spare parts list

| Number   | Item Number        | Designation  | Number of units | Lead time |
|--|--------------------|--|-----------------|-----------|
| 20   | 09 14 10 031 90    | seal   | 2.00            | 2         |
| 2  | 90 30 02 072 00-28 | Metal shower hose 1/2" x 3/8" x 49-1/4" - Brushed Durabron (23kt Gold) | 1.00            | 20        |
| 18   | 04 31 20 034 00 90 | plug   | 2.00            | 2         |
| 4  | 09 31 11 058 90    | pin  | 1.00            | 2         |
| 19   | 09 23 01 057 90    | flow reducer   | 1.00            | 2         |
| 3  | 09 18 40 118 90    | sleeve   | 1.00            | 2         |
| 17   | 90 11 70 011 00-28 | spout  | 1.00            | 20        |
| 14   | 09 24 03 069 90    | nipple   | 1.00            | 2         |
| 9  | 90 16 02 023 00 90 | spring   | 1.00            | 2         |
| 10   | 09 31 09 094 20-28 | pull-rod   | 1.00            | 60        |
| 12   | 09 21 34 080-28    | nipple   | 1.00            | 60        |
| 5  | 09 31 11 040 90    | pin  | 3.00            | 2         |
| 15   | 90 21 02 069 00-28 | cover  | 1.00            | 20        |
| 11   | 90 14 10 055 00 90 | seal   | 1.00            | 2         |
| 6  | 90 23 01 141 00 90 | back-flow preventer  | 1.00            | 2         |
| 7  | 90 14 10 010 00 90 | seal   | 2.00            | 2         |
| 13   | 90 14 10 033 00 90 | seal   | 1.00            | 2         |
| 16   | 90 14 20 026 00 90 | seal   | 1.00            | 2         |
| 1  | 90 12 11 140 41-28 | shower   | 1.00            | 20        |
| 25   | 09 14 10 037 90    | seal   | 1.00            | 2         |
| 24   | 09 24 04 298 90    | nut  | 1.00            | 2         |
| 37   | 09 14 10 018 90    | seal   | 1.00            | 2         |
| 23   | 90 15 05 039 00 90 | cartridge  | 1.00            | 2         |
| 8  | 09 24 03 130-28    | nipple   | 1.00            | -         |
| Spare part can no longer be ordered, please order the replacement item |                    |  |                 |           |
| 32   | 09 20 93 051 90    | holder   | 2.00            | 2         |
| 36   | 09 14 10 084 90    | seal   | 1.00            | 2         |
| 34   | 09 27 71 011-28    | rosette  | 1.00            | 60        |
| 27   | 09 20 80 022-28    | handle   | 1.00            | 20        |
| 35   | 09 14 03 107 90    | seal   | 1.00            | 2         |
| 31   | 04 28 22 025 00 90 | connection   | 2.00            | 2         |
| 28   | 90 31 11 030 00 90 | pin  | 1.00            | 2         |
| 22   | 09 14 10 148 90    | seal   | 1.00            | 2         |
| 33   | 04 28 22 024 00-28 | pipe   | 1.00            | 60        |
| 29   | 90 31 20 087 00-28 | plug   | 1.00            | 20        |
| 30   | 09 14 10 139 90    | seal   | 4.00            | 2         |
| 26   | 09 28 30 036-28    | cover  | 1.00            | 20        |