



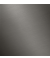

CYO Single-lever tub mixer with stand pipe for freestanding installation with hand shower set - Brushed Dark Platinum

25 863 811



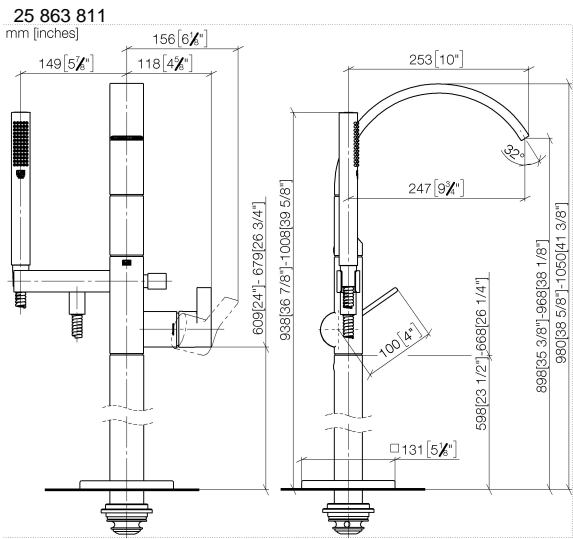
- 10" Projection
- Rectangular aerated stream
- Spout flow rate max. 7 gpm
- Hand-held shower: COMPACT RAIN, flow rate max. 1.8 gpm (at 3 bar)
- Baton hand shower with descaling system
- Hand shower bracket
- Integrated diverter
- Total height 38-5/8" - 41-3/8"
- Lower body height 23-1/2" - 26-1/4"
- Height to aerator/spout outlet 35-1/2" - 38-1/4"
- Flange 5-1/8" x 5-1/8"
- Metal shower hose 49-1/4" with anti-twist device

NOTE: Local building codes may require the use of an anti-scald device. Please refer to remote pressure balance valve (35 914 970 90)

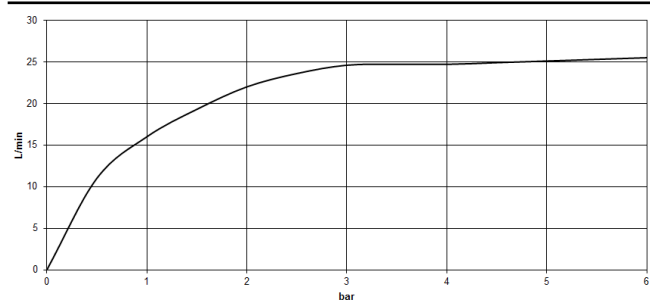
	Brushed Dark Platinum	25 863 811-99
	Chrome	25 863 811-00
	Brushed Platinum	25 863 811-06
	Dark Chrome	25 863 811-19
	Brushed Durabronze (23kt Gold)	25 863 811-28



CYO Single-lever tub mixer with stand pipe for freestanding installation with hand shower set - Brushed Dark Platinum



Flow rate chart



Codes & Standards

ASME A112.18.1	California Energy Commission (CEC)	cUPC	DIN 4109
EN 1717	ISO 3822	Scottish Water Byelaws	UK Water Supply Regulations

Ü-Zeichen



CYO Single-lever tub mixer with stand pipe for freestanding installation with hand shower set - Brushed Dark Platinum

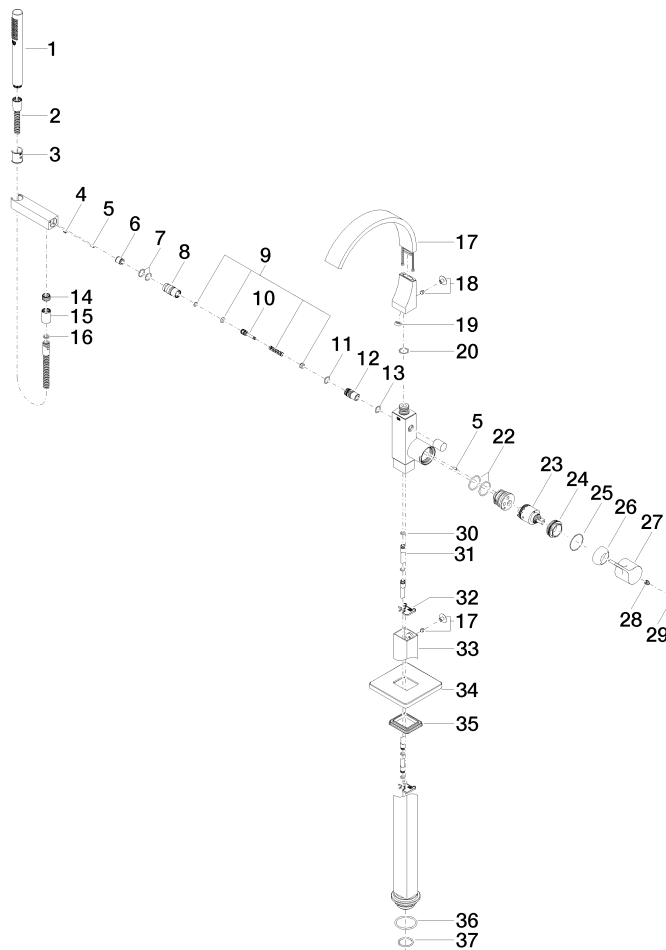
25 863 811
Certificates

IAPMO_4976	LGA_38	WRAS_2201	Belgaqua_21-376-2
------------	--------	-----------	-------------------

CYO Single-lever tub mixer with stand pipe for freestanding installation with hand shower set - Brushed Dark Platinum

25 863 811

Parts for other
finishes can be found
here: [Chrome](#)





CYO Single-lever tub mixer with stand pipe for freestanding installation with hand shower set - Brushed Dark Platinum

25 863 811

Spare parts list

Number	Item Number	Designation	Number of units	Lead time
1	90 12 11 140 41-99	shower	1	20
2	90 30 02 072 00-99	Metal shower hose 1/2" x 3/8" x 49-1/4" - Brushed Dark Platinum	1	20
3	09 18 40 118 90	sleeve	1	2
4	09 31 11 058 90	pin	1	2
5	09 31 11 040 90	pin	3	2
6	90 23 01 141 00 90	back-flow preventer	1	2
7	90 14 10 010 00 90	seal	2	2
8	09 24 03 130-00	nipple	1	10
9	90 16 02 023 00 90	spring	1	2
10	09 31 09 094 20-99	pull-rod	1	20
11	90 14 10 055 00 90	seal	1	2
12	09 21 34 080-99	nipple	1	20
13	90 14 10 033 00 90	seal	1	2
14	09 24 03 069 90	nipple	1	2
15	90 21 02 069 00-99	cover	1	20
16	90 14 20 026 00 90	seal	1	2
17	90 11 70 011 00-99	spout	1	20
18	04 31 20 034 00 90	plug	2	2
19	09 23 01 057 90	flow reducer	1	2
20	09 14 10 031 90	seal	2	2
21	09 14 10 148 90	seal	1	2
22	90 15 05 039 00 90	cartridge	1	2
23	09 24 04 298 90	nut	1	2
24	09 14 10 037 90	seal	1	2
25	09 28 30 036-99	cover	1	20
26	09 20 80 022-99	handle	1	20
27	90 31 11 030 00 90	pin	1	2
28	90 31 20 087 00-99	plug	1	20
29	09 14 10 139 90	seal	4	2
30	04 28 22 025 00 90	connection	2	2
31	09 20 93 051 90	holder	2	2
32	04 28 22 024 00-99	pipe	1	20
33	09 27 71 011-99	rosette	1	20
34	09 14 03 107 90	seal	1	2
35	09 14 10 084 90	seal	1	2
36	09 14 10 018 90	seal	1	2