

MADISON Two-hole tub mixer for freestanding installation with hand shower set - Platinum

25 943 360









- 9-5/8" Projection
- Spout: Rectangular aerator
- Hand-held shower: COMPACT RAIN, flow rate max. 1.8 gpm (at 3 bar)
- Hand shower with descaling system
- Tub / shower diverter
- Hand shower bracket
- Total height 35-1/2"
- Riser height 28-3/4"
- Height to aerator/spout outlet 24"
- Flanges Ø 3-1/2"
- Center to center 6"
- Metal shower hose 49-1/4" with anti-twist device
- Water flow rate limited to max. 13.5 gpm

Internal backflow preventer.

NOTE: Local building codes may require the use of an anti-scald device. Please refer to remote pressure balance valve (35 914 970 90)

Internal backflow preventer.

NOTE: Local building codes may require the use of an anti-scald device. Please refer to remote pressure balance valve (35 914 970 90)

	Platinum	25 943 360-08
	Chrome	25 943 360-00
	Brushed Platinum	25 943 360-06
	Durabrand (23kt Gold)	25 943 360-09
	Brushed Durabrand (23kt Gold)	25 943 360-28
	Brushed Dark Platinum	25 943 360-99

Required article

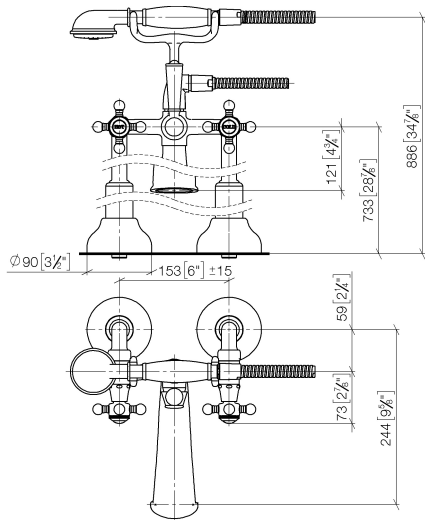


- Floor mounting rough set -** 35 951 970-90
- Max. rough in depth "
 - Min. rough in depth "

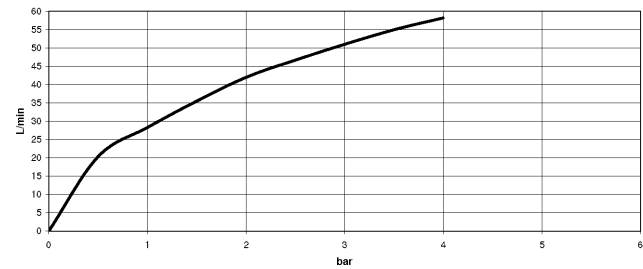


MADISON Two-hole tub mixer for freestanding installation with hand shower set - Platinum

25 943 360
mm [inches]



Flow rate chart



Codes & Standards

ASME A112.18.1	ASME A112.18.1/CSA B125.1	cUPC	EN 1717
Scottish Water Byelaws	UK Water Supply Regulations		



MADISON Two-hole tub mixer for freestanding installation with hand shower set - Platinum

25 943 360

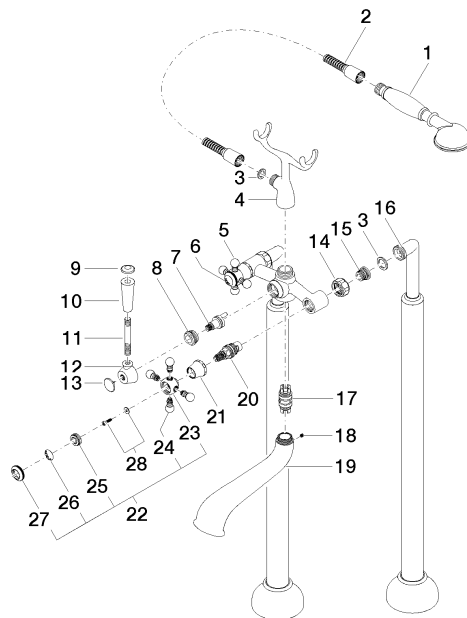
Certificates

IAPMO_4976

Belgaqua_21-378-2 WRAS_1911

MADISON Two-hole tub mixer for freestanding installation with hand shower set - Platinum

25 943 360





MADISON Two-hole tub mixer for freestanding installation with hand shower set - Platinum

25 943 360

Spare parts list

Number	Item Number	Designation	Number of units	Lead time
1	28 002 970-08	MADISON Metal hand shower with porcelain (white) handle - Platinum	1	40
2	28 104 970-08	Metal shower hose 1/2" x 1/2" x 49-1/4" - Platinum	1	40
3	90 14 20 002 00 90	seal	1	2
4	04 17 20 010 00-08	holder	1	-
Spare part can no longer be ordered, please order the replacement item				
5	04 20 36 002 07-08	handle (hot)	1	40
6	09 26 01 011 90	accessories	1	2
7	90 15 01 001 00 90	diverter	1	2
8	09 23 10 007 90	nut	1	2
9	09 30 30 062-08	screw	1	40
10	11 170 370-08	MADISON Lever insert - Platinum	1	40
11	09 28 22 013 90	pipe	1	2
12	09 18 20 011-08	base	1	40
13	09 30 30 064-08	screw	1	40
14	09 23 30 010-08	nut	2	60
15	04 29 05 014 00 90	nipple	2	2
16	12 943 360-08	connection	1	60
17	90 21 10 010 00 90	insert	1	2
18	90 31 11 030 00 90	pin	1	2
19	13 592 380-08	spout	1	60
20	90 90 03 131 00 90	top	2	2
21	09 21 02 055-08	cover	2	40
22	04 20 36 002 06-08	handle (cold)	1	40
23	09 20 36 002-08	handle	2	40
24	09 20 36 004-08	handle	8	40
25	09 20 83 006 90	handle	2	2
26	09 26 01 010 90	accessories	1	2
27	09 20 36 005-08	handle	2	40
28	04 30 30 029 00 90	fixing set	2	2