



MADISON Two-hole tub mixer for freestanding installation with hand shower set - Brushed Dark Platinum

MADISON

25 943 360 Product version from 7/1/2025










- 9-5/8" Projection
- Spout: Rectangular aerator
- Hand-held shower: COMPACT RAIN, flow rate max. 1.8 gpm (at 3 bar)
- Hand shower with descaling system
- Tub / shower diverter
- Hand shower bracket
- Total height 35-1/2"
- Riser height 28-3/4"
- Height to aerator/spout outlet 24"
- Flanges Ø 3-1/2"
- Center to center 6"
- Metal shower hose 49-1/4" with anti-twist device
- Water flow rate limited to max. 13.5 gpm

**Internal backflow preventer.**  
**NOTE: Local building codes may require the use of an anti-scald device. Please refer to remote pressure balance valve (35 914 970 90)**

Internal backflow preventer.

NOTE: Local building codes may require the use of an anti-scald device. Please refer to remote pressure balance valve (35 914 970 90)

	Brushed Dark Platinum	25 943 360-99
	Chrome	25 943 360-00
	Brushed Platinum	25 943 360-06
	Platinum	25 943 360-08
	Durabrand (23kt Gold)	25 943 360-09
	Brushed Durabrand (23kt Gold)	25 943 360-28
	Brushed Dark Brass	25 943 360-39

Required article



- Floor mounting rough set -**
- Max. rough in depth 6-1/4"
  - Min. rough in depth 3-1/8"

35 951 970-90  
0010

## MADISON Two-hole tub mixer for freestanding installation with hand shower set - Brushed Dark Platinum

MADISON

25 943 360 Product version from 7/1/2025  
mm [inches]



Flow rate chart



### Codes & Standards

ASME A112.18.1

cUPC

EN 1717

Scottish Water  
Byelaws

UK Water Supply  
Regulations



## MADISON Two-hole tub mixer for freestanding installation with hand shower set - Brushed Dark Platinum

---

MADISON

25 943 360 Product version from 7/1/2025

Certificates and sustainability

---

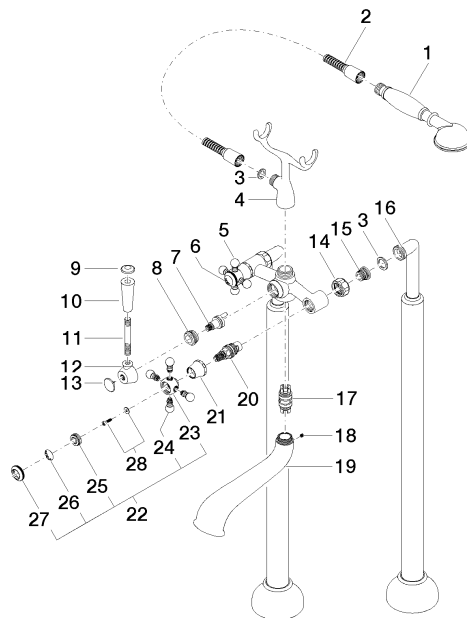
IAPMO\_4976

Belgaqua\_21-378-2 WRAS\_250502

# MADISON Two-hole tub mixer for freestanding installation with hand shower set - Brushed Dark Platinum

MADISON

25 943 360 Product version from 7/1/2025





## MADISON Two-hole tub mixer for freestanding installation with hand shower set - Brushed Dark Platinum

MADISON

25 943 360 Product version from 7/1/2025

### Spare parts list

Number	Item Number	Designation	Number of units	Lead time
27	09 20 36 005-99	handle	2.00	20
20	90 90 03 131 00 90	top	2.00	2
25	09 20 83 006 90	handle	2.00	2
14	09 23 30 010-99	nut	2.00	20
9	09 30 30 062-99	screw	1.00	20
21	09 21 02 055-99	cover	2.00	20
19	13 592 380-99	spout	1.00	60
12	09 18 20 011-99	base	1.00	20
11	09 28 22 013 90	pipe	1.00	2
2	28 104 970-99	Metal shower hose 1/2" x 1/2" x 49-1/4" - Brushed Dark Platinum	1.00	2
8	09 23 10 007 90	nut	1.00	2
24	09 20 36 004-99	handle	8.00	20
16	12 943 360-99	connection	1.00	60
1	28 002 970-99	MADISON Metal hand shower with porcelain (white) handle - Brushed Dark Platinum	1.00	20
13	09 30 30 064-99	screw	1.00	20
26	09 26 01 010 90	accessories	1.00	2
5	04 20 36 002 07-99	handle ( hot )	1.00	20
23	09 20 36 002-99	handle	2.00	20
15	04 29 05 014 00 90	nipple	2.00	2
4	04 17 20 010 00-99	holder	1.00	20
6	09 26 01 011 90	accessories	1.00	2
22	04 20 36 002 06-99	handle ( cold )	1.00	20
10	11 170 370-99	MADISON Lever insert - Brushed Dark Platinum	1.00	20
28	04 30 30 029 00 90	fixing set	2.00	2
7	90 15 01 001 00 90	diverter	1.00	2
3	90 14 20 002 00 90	seal	1.00	2
17	90 21 10 010 00 90	insert	1.00	2
18	90 31 11 030 00 90	pin	1.00	2