

## TARA Two-hole tub mixer for freestanding installation with hand shower set - Matte Black

25 943 882 Product version from 5/27/2021



- 8-5/8" Projection
- Swiveling spout 180°
- Spout: Round aerated stream
- Hand-held shower: COMPACT RAIN, flow rate max. 1.8 gpm (at 3 bar)
- Hand shower with descaling system
- Tub / shower diverter
- Total height 36-1/4"
- Riser height 24-3/4"
- Height to aerator/spout outlet 30-1/8"
- Flanges Ø 3-1/2"
- Center to center 5-7/8"
- Metal shower hose 49-1/4" with anti-twist device
- Hand shower to be mounted on right pillar
- Water flow rate limited to max. 5.8 gpm

(ADA)

**NOTE: Local building codes may require the use of an anti-scald device. Please refer to remote pressure balance valve (35 914 970 90) Internal backflow preventer.**

(ADA)

NOTE: Local building codes may require the use of an anti-scald device. Please refer to remote pressure balance valve (35 914 970 90)

Internal backflow preventer.

|   |                                |               |
|---|--------------------------------|---------------|
|    | Matte Black                    | 25 943 882-33 |
|    | Chrome                         | 25 943 882-00 |
|    | Brushed Platinum               | 25 943 882-06 |
|    | Platinum                       | 25 943 882-08 |
|    | Dark Chrome                    | 25 943 882-19 |
|    | Brushed Durabronze (23kt Gold) | 25 943 882-28 |
|    | Brushed Bronze                 | 25 943 882-42 |
|    | Brushed Champagne (22kt Gold)  | 25 943 882-46 |
|   | Champagne (22kt Gold)          | 25 943 882-47 |
|  | Brushed Chrome                 | 25 943 882-93 |
|  | Brushed Dark Platinum          | 25 943 882-99 |

### Required article



#### Floor mounting rough set -

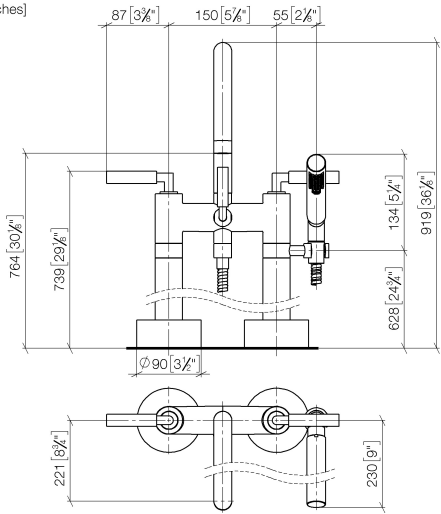
- Max. rough in depth "
- Min. rough in depth "

35 951 970-90  
0010



TARA Two-hole tub mixer for freestanding installation with hand shower set -  
Matte Black

25 943 882    Product version from 5/27/2021  
mm [inches]



Flow rate chart



Codes & Standards

|                |                           |                        |                             |
|----------------|---------------------------|------------------------|-----------------------------|
| ASME A112.18.1 | ASME A112.18.1/CSA B125.1 | cUPC                   | DIN 4109                    |
| EN 1717        | ISO 3822                  | Scottish Water Byelaws | UK Water Supply Regulations |

Ü-Zeichen



TARA Two-hole tub mixer for freestanding installation with hand shower set -  
Matte Black

---

25 943 882 Product version from 5/27/2021

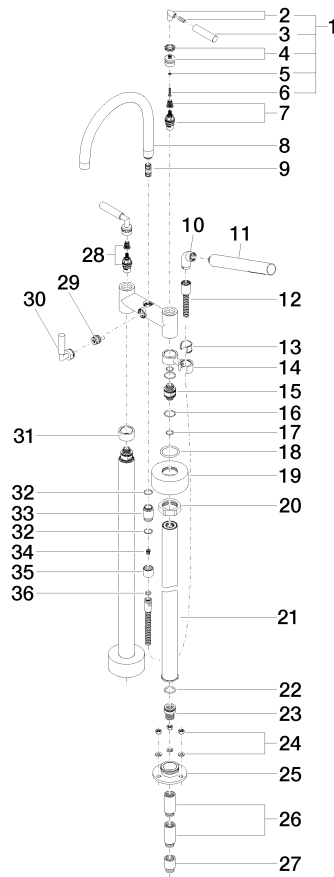
Certificates

---

|            |           |        |                   |
|------------|-----------|--------|-------------------|
| IAPMO_4976 | WRAS_2212 | LGA_18 | Belgaqua_21-033-2 |
|------------|-----------|--------|-------------------|

## TARA Two-hole tub mixer for freestanding installation with hand shower set - Matte Black

25 943 882 Product version from 5/27/2021





## TARA Two-hole tub mixer for freestanding installation with hand shower set - Matte Black

25 943 882 Product version from 5/27/2021

### Spare parts list

| Number   | Item Number        | Designation   | Number of units | Lead time |
|--|--------------------|---|-----------------|-----------|
| 1  | 04 20 88 052 00-33 | handle  | 2               | 30        |
| 2  | 04 18 20 022 00-33 | angle   | 2               | 30        |
| 3  | 09 20 88 052-33    | handle  | 2               | 30        |
| 4  | 90 12 12 007 00-33 | base  | 2               | 30        |
| 5  | 90 30 11 029 00 90 | disc  | 2               | 2         |
| 6  | 90 30 30 075 00 90 | screw   | 2               | 2         |
| 7  | 90 90 03 130 00 90 | top   | 1               | 2         |
| 8  | 90 28 22 222 00-33 | spout   | 1               | 30        |
| 9  | 90 21 10 011 00 90 | diverter  | 1               | 2         |
| 10   | 04 24 04 189 00-33 | nipple  | 1               | 30        |
| 11   | 90 12 11 140 41-33 | shower  | 1               | 30        |
| 12   | 90 30 02 072 00-33 | Metal shower hose 1/2" x 3/8" x 49-1/4" - Matte Black | 1               | 30        |
| 13   | 90 18 40 035 00 90 | sleeve  | 1               | 2         |
| 14   | 04 28 10 029 01-33 | holder  | 1               | 30        |
| 15   | 09 29 05 021 20 90 | nipple  | 2               | 2         |
| 16   | 09 14 10 112 90    | seal  | 4               | 2         |
| 17   | 90 14 10 055 00 90 | seal  | 4               | 2         |
| 18   | 09 14 10 041 90    | seal  | 2               | 2         |
| 19   | 09 27 89 025-33    | rosette   | 2               | 30        |
| 20   | 09 23 30 040-07    | nut   | 2               | 30        |
| 21   | 04 28 22 009 20-33 | connection  | 2               | 30        |
| 22   | 09 14 10 081 90    | seal  | 2               | 2         |
| 23   | 09 24 03 094-07    | nipple  | 2               | 30        |
| 24   | 04 23 10 023 00 90 | fixing set  | 6               | 2         |
| 25   | 09 30 11 130-07    | connection  | 2               | 30        |
| 26   | 09 24 03 081 10 90 | extension   | 4               | 2         |
| 27   | 09 24 03 080 90    | extension   | 2               | 2         |
| 28   | 90 90 03 131 00 90 | top   | 1               | 2         |
| 29   | 90 15 01 005 00 90 | insert  | 1               | 2         |
| 30   | 90 18 20 025 00-33 | diverter  | 1               | -         |
| Spare part can no longer be ordered, please order the replacement item |                    |   |                 |           |
| 31   | 09 28 10 028-33    | sleeve  | 1               | 30        |
| 32   | 90 14 10 032 00 90 | seal  | 1               | 2         |
| 33   | 09 24 03 121-33    | nipple  | 1               | 30        |
| 34   | 09 23 01 131 90    | back-flow preventer                                   | 1               | 2         |
| 35   | 09 21 02 143-33    | sleeve  | 1               | 30        |
| 36   | 90 14 20 026 00 90 | seal  | 1               | 2         |