

Shower riser without hand shower - Dark Chrome

SERIES SPECIFIC

26 024 661 Product version from 10/1/2023



- Swiveling 180°
- Rainshower
- Rain shower with descaling system
- Rain shower water flow rate limited to max. 1.8 gpm (at 3 bar)
- Function from: 1.7 gpm
- Rain shower diameter 11-3/4"
- Showerhead holder with rosette, Ø 3-1/8"
- Metal shower hose 49-1/4" with anti-twist device
- Height from center of faucet to top of shower arm 89-3/4"
- Height from center of faucet to bottom of rainhead 76-3/8"
- Shower head/ hand shower integrated diverter
- Flanges Ø 2-1/8"
- Pipe diameter 3/4"
- with drip prevention
- This product reduces water consumption by 28% (compared to requirements of EPA Act '92)
- This product contributes to meeting the requirements of the LEED® Green Building Rating
- This product can help a building meet the requirements of Green Building Rating Systems, e.g. LEED®, BREEAM®, DGNB

Recommended spacing between bottom edge of shower riser and floor 3-5/8".

NOTE: Local building codes may require the use of an anti-scald device. Please refer to remote pressure balance valve (35 914 970 90)

Internal backflow preventer.

NOTE: Hand shower sold separately. Please see hand shower options under the miscellaneous articles section of each series.

Rough to be connected to lower wall bracket

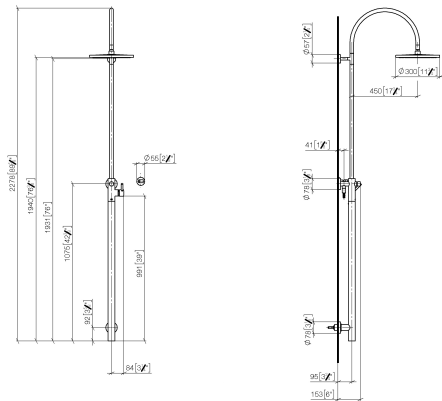
	Dark Chrome	26 024 661-19 0010
	Chrome	26 024 661-00 0010
	Brushed Platinum	26 024 661-06 0010
	Platinum	26 024 661-08 0010
	Light gold	26 024 661-26 0010
	Brushed Light Gold	26 024 661-27 0010
	Brushed Durabronze (23kt Gold)	26 024 661-28 0010
	Matte Black	26 024 661-33 0010
	Brushed Bronze	26 024 661-42 0010
	Brushed Champagne (22kt Gold)	26 024 661-46 0010
	Champagne (22kt Gold)	26 024 661-47 0010
	Brushed Chrome	26 024 661-93 0010
	Brushed Dark Platinum	26 024 661-99 0010

Shower riser without hand shower - Dark Chrome

SERIES SPECIFIC

26 024 661 Product version from 10/1/2023

mm [inch]

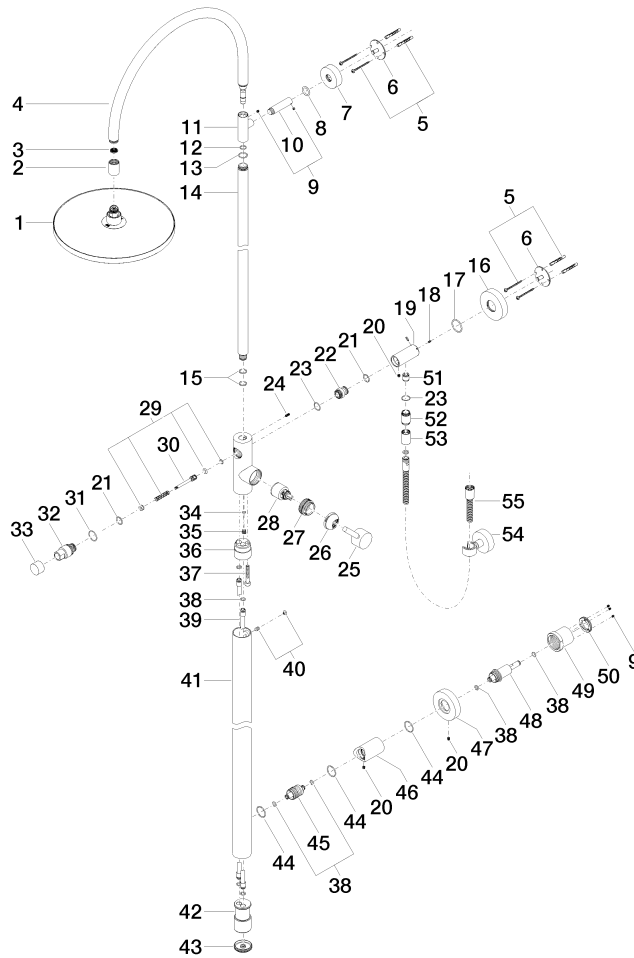


Shower riser without hand shower - Dark Chrome

SERIES SPECIFIC

26 024 661 Product version from 10/1/2023

Parts for other
finishes can be found
here: [Chrome](#)



Spare parts list

Number	Item Number	Designation	Number of units	Lead time
11	09 17 11 049-19	holder	1.00	20
33	09 20 88 002-19	handle	1.00	20
45	09 24 04 215 20 90	nipple	1.00	2
38	09 14 10 139 90	seal	6.00	2
2	09 24 03 163 20-19	adaptor	1.00	20
7	09 27 89 000-19	rosette	1.00	20
31	09 14 10 112 90	seal	1.00	2
41	04 28 22 034 00-19	pipe	1.00	20
50	09 24 77 002 90	nut	1.00	2
6	09 30 11 103 90	holder	2.00	2
42	09 17 11 024 20 90	distributor	1.00	60
4	90 28 22 082 00-19	spout	1.00	20
32	09 21 34 081 20-19	nipple	1.00	20
49	09 21 02 128 90	sleeve	1.00	2
37	09 30 30 111 90	screw	1.00	2
10	09 11 10 083-19	connection	1.00	20
14	04 28 22 134 20-19	pipe	1.00	20
20	09 31 11 049 90	pin	3.00	2
35	09 31 20 027 10-00	plug	1.00	10
34	09 14 10 132 90	seal	1.00	2
54	28 050 920-19	holder	1.00	-

Shower riser without hand shower - Dark Chrome

SERIES SPECIFIC

26 024 661 Product version from 10/1/2023

Spare part can no longer be ordered, please order the replacement item

1	04 12 05 091 10-19	shower	1.00	20
24	09 31 11 024 90	pin	1.00	2
25	90 20 66 017 00-19	handle	1.00	20
43	09 21 02 132-19	lid	1.00	20
48	09 24 04 210 10 90	nipple	1.00	2
46	09 11 10 080 20-19	connection	1.00	20
39	04 28 22 038 00 90	connection	2.00	2
8	09 14 10 006 90	seal	1.00	2
22	09 24 03 162 20 90	nipple	1.00	2
47	09 27 88 008-19	rosette	1.00	20
3	09 23 01 039 90	sieve	1.00	2
13	09 14 10 122 90	seal	1.00	2
29	90 16 02 023 00 90	spring	1.00	2
26	09 28 30 042-19	cover	1.00	20
30	09 31 09 102 20-19	pull-rod	1.00	-

Spare part can no longer be ordered, please order the replacement item

17	09 14 10 101 90	seal	1.00	2
28	90 15 05 064 00 90	cartridge	1.00	2
19	09 11 10 081 20-19	connection	1.00	20
55	90 30 02 072 00-19	Metal shower hose 1/2" x 3/8" x 49-1/4" - Dark Chrome	1.00	20
5	05 30 31 025 00 90	fixing set	2.00	2
27	09 24 04 341 90	nut	1.00	60
52	09 24 03 115 20-19	nipple	1.00	20
18	09 31 11 061 90	pin	2.00	2
36	09 24 03 149 10-19	adaptor	1.00	-

Spare part can no longer be ordered, please order the replacement item

16	09 27 88 010-19	rosette	1.00	20
40	04 31 20 034 00 90	plug	1.00	2
44	90 14 10 063 00 90	seal	3.00	2
12	90 14 10 077 00 90	seal	1.00	2
53	90 21 02 069 00-19	cover	1.00	20
9	90 31 11 030 00 90	pin	1.00	2
51	90 23 01 141 00 90	back-flow preventer	1.00	2
15	90 14 10 055 00 90	seal	2.00	2
21	90 14 10 010 00 90	seal	2.00	2
23	90 14 10 032 00 90	seal	2.00	2