

Shower riser without hand shower - Matte Black

SERIES SPECIFIC

26 024 661 Product version from 10/1/2023



- Swiveling 180°
- Rainshower
- Rain shower with descaling system
- Rain shower water flow rate limited to max. 1.8 gpm (at 3 bar)
- Function from: 1.7 gpm
- Rain shower diameter 11-3/4"
- Showerhead holder with rosette, Ø 3-1/8"
- Metal shower hose 49-1/4" with anti-twist device
- Height from center of faucet to top of shower arm 89-3/4"
- Height from center of faucet to bottom of rainhead 76-3/8"
- Shower head/ hand shower integrated diverter
- Flanges Ø 2-1/8"
- Pipe diameter 3/4"
- with drip prevention
- This product reduces water consumption by 28% (compared to requirements of EPA Act '92)
- This product contributes to meeting the requirements of the LEED® Green Building Rating
- This product can help a building meet the requirements of Green Building Rating Systems, e.g. LEED®, BREEAM®, DGNB

Recommended spacing between bottom edge of shower riser and floor 3-5/8".

NOTE: Local building codes may require the use of an anti-scald device. Please refer to remote pressure balance valve (35 914 970 90) Internal backflow preventer.

NOTE: Hand shower sold separately. Please see hand shower options under the miscellaneous articles section of each series.

Rough to be connected to lower wall bracket

Recommended spacing between bottom edge of shower riser and floor 3-5/8".

NOTE: Local building codes may require the use of an anti-scald device. Please refer to remote pressure balance valve (35 914 970 90)

Internal backflow preventer.

NOTE: Hand shower sold separately. Please see hand shower options under the miscellaneous articles section of each series.

Rough to be connected to lower wall bracket


	Matte Black	26 024 661-33 0010
	Chrome	26 024 661-00 0010
	Brushed Platinum	26 024 661-06 0010
	Platinum	26 024 661-08 0010
	Dark Chrome	26 024 661-19 0010
	Light gold	26 024 661-26 0010
	Brushed Light Gold	26 024 661-27 0010
	Brushed Durabronze (23kt Gold)	26 024 661-28 0010
	Brushed Bronze	26 024 661-42 0010
	Brushed Champagne (22kt Gold)	26 024 661-46 0010
	Champagne (22kt Gold)	26 024 661-47 0010
	Brushed Chrome	26 024 661-93 0010
	Brushed Dark Platinum	26 024 661-99 0010

Shower riser without hand shower - Matte Black


SERIES SPECIFIC

26 024 661 Product version from 10/1/2023

Required article

	Wall mounting -	35 003 970-90
	•Max. rough in depth 4"	0010
	•Min. rough in depth 3-1/8"	

Required article

	Hand shower FlowReduce - Matte Black	28 016 979-33
		0010


Required article

	SERIES-VARIOUS Hand shower FlowReduce - Matte Black	28 027 979-33
		0010


Required article

	SERIES-VARIOUS Hand shower FlowReduce - Matte Black	28 025 979-33
		0010

Required article

	Hand shower FlowReduce - Matte Black	28 012 979-33
		0010

Required article

	Hand shower FlowReduce - Matte Black	28 018 979-33
		0010

Required article

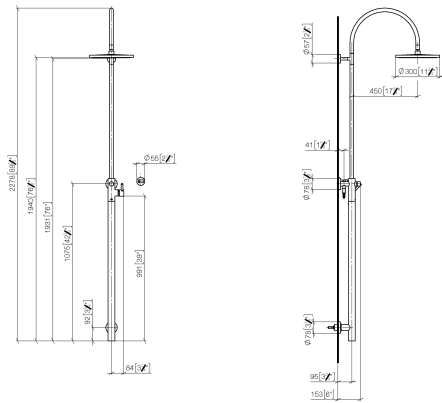
	SERIES-VARIOUS Hand shower FlowReduce - Matte Black	28 029 979-33
		0010

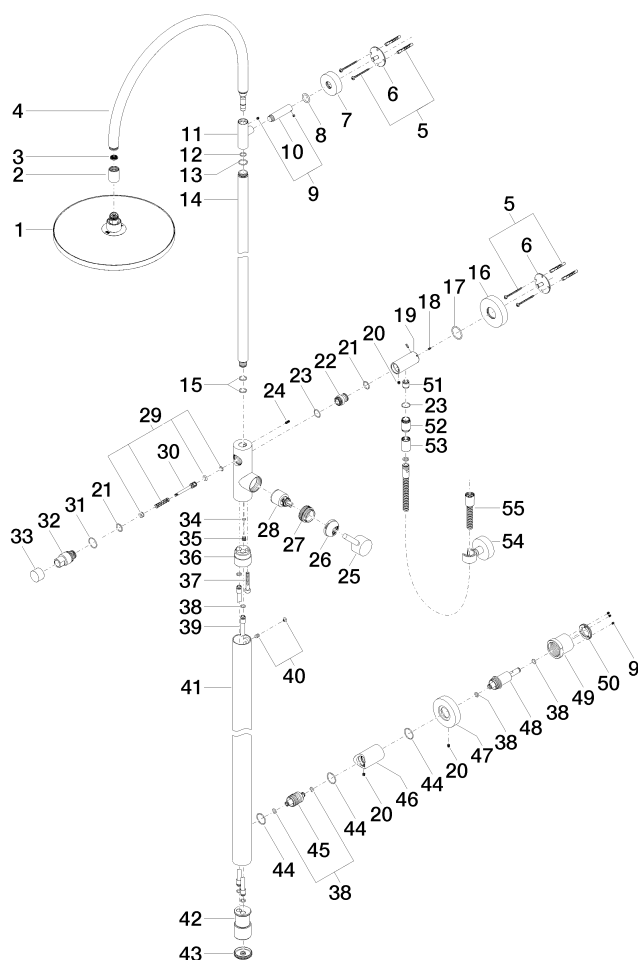
Shower riser without hand shower - Matte Black

SERIES SPECIFIC

26 024 661 Product version from 10/1/2023

mm [inch]





Spare parts list

Number	Item Number	Designation	Number of units	Lead time
37	09 30 30 111 90	screw	1.00	2
40	04 31 20 034 00 90	plug	1.00	2
27	09 24 04 341 90	nut	1.00	60
33	09 20 88 002-33	handle	1.00	30
17	09 14 10 101 90	seal	1.00	2
46	09 11 10 080 20-33	connection	1.00	30
55	90 30 02 072 00-33	Metal shower hose 1/2" x 3/8" x 49-1/4" - Matte Black	1.00	30
5	05 30 31 025 00 90	fixing set	2.00	2
4	90 28 22 082 00-33	spout	1.00	-
Spare part can no longer be ordered, please order the replacement item				
29	90 16 02 023 00 90	spring	1.00	2
49	09 21 02 128 90	sleeve	1.00	2
30	09 31 09 102 20-33	pull-rod	1.00	-
Spare part can no longer be ordered, please order the replacement item				
38	09 14 10 139 90	seal	6.00	2
47	09 27 88 008-33	rosette	1.00	30
11	09 17 11 049-33	holder	1.00	60
16	09 27 88 010-33	rosette	1.00	30
25	90 20 66 017 00-33	handle	1.00	30

Shower riser without hand shower - Matte Black

SERIES SPECIFIC

26 024 661 Product version from 10/1/2023

28	90 15 05 064 00 90	cartridge	1.00	2
20	09 31 11 049 90	pin	3.00	2
54	28 050 920-33	holder	1.00	-
Spare part can no longer be ordered, please order the replacement item				
14	04 28 22 134 20-33	pipe	1.00	30
2	09 24 03 163 20-33	adaptor	1.00	30
45	09 24 04 215 20 90	nipple	1.00	2
24	09 31 11 024 90	pin	1.00	2
39	04 28 22 038 00 90	connection	2.00	2
35	09 31 20 027 10-00	plug	1.00	10
10	09 11 10 083-33	connection	1.00	30
13	09 14 10 122 90	seal	1.00	2
41	04 28 22 034 00-33	pipe	1.00	30
3	09 23 01 039 90	sieve	1.00	2
36	09 24 03 149 10-33	adaptor	1.00	-
Spare part can no longer be ordered, please order the replacement item				
18	09 31 11 061 90	pin	2.00	2
26	09 28 30 042-33	cover	1.00	30
50	09 24 77 002 90	nut	1.00	2
31	09 14 10 112 90	seal	1.00	2
32	09 21 34 081 20-33	nipple	1.00	30
34	09 14 10 132 90	seal	1.00	2
7	09 27 89 000-33	rosette	1.00	30
6	09 30 11 103 90	holder	2.00	2
19	09 11 10 081 20-33	connection	1.00	30
22	09 24 03 162 20 90	nipple	1.00	2
8	09 14 10 006 90	seal	1.00	2
43	09 21 02 132-33	lid	1.00	30
1	04 12 05 091 10-33	shower	1.00	30
52	09 24 03 115 20-33	nipple	1.00	30
42	09 17 11 024 20 90	distributor	1.00	60
48	09 24 04 210 10 90	nipple	1.00	2
15	90 14 10 055 00 90	seal	2.00	2
12	90 14 10 077 00 90	seal	1.00	2
21	90 14 10 010 00 90	seal	2.00	2
51	90 23 01 141 00 90	back-flow preventer	1.00	2
53	90 21 02 069 00-33	cover	1.00	30
44	90 14 10 063 00 90	seal	3.00	2
23	90 14 10 032 00 90	seal	2.00	2
9	90 31 11 030 00 90	pin	1.00	2