

Shower riser without hand shower - Brushed Bronze

SERIES SPECIFIC

26 024 661 Product version from 10/1/2023



- Swiveling 180°
 - Rainshower
 - Rain shower with descaling system
 - Rain shower water flow rate limited to max. 1.8 gpm (at 3 bar)
 - Function from: 1.7 gpm
 - Rain shower diameter 11-3/4"
 - Showerhead holder with rosette, Ø 3-1/8"
 - Metal shower hose 49-1/4" with anti-twist device
 - Height from center of faucet to top of shower arm 89-3/4"
 - Height from center of faucet to bottom of rainhead 76-3/8"
 - Shower head/ hand shower integrated diverter
 - Flanges Ø 2-1/8"
 - Pipe diameter 3/4"
 - with drip prevention
 - This product reduces water consumption by 28% (compared to requirements of EPA '92)
 - This product contributes to meeting the requirements of the LEED® Green Building Rating
 - This product can help a building meet the requirements of Green Building Rating Systems, e.g. LEED®, BREEAM®, DGNB
- Recommended spacing between bottom edge of shower riser and floor 3-5/8".**
NOTE: Local building codes may require the use of an anti-scald device. Please refer to remote pressure balance valve (35 914 970 90) Internal backflow preventer.

NOTE: Hand shower sold separately. Please see hand shower options under the miscellaneous articles section of each series.
Rough to be connected to lower wall bracket

Recommended spacing between bottom edge of shower riser and floor 3-5/8".

NOTE: Local building codes may require the use of an anti-scald device. Please refer to remote pressure balance valve (35 914 970 90)

Internal backflow preventer.

NOTE: Hand shower sold separately. Please see hand shower options under the miscellaneous articles section of each series.

Rough to be connected to lower wall bracket

	Brushed Bronze	26 024 661-42 0010
	Chrome	26 024 661-00 0010
	Brushed Platinum	26 024 661-06 0010
	Platinum	26 024 661-08 0010
	Dark Chrome	26 024 661-19 0010
	Light gold	26 024 661-26 0010
	Brushed Light Gold	26 024 661-27 0010
	Brushed Durabronze (23kt Gold)	26 024 661-28 0010
	Matte Black	26 024 661-33 0010
	Brushed Champagne (22kt Gold)	26 024 661-46 0010
	Champagne (22kt Gold)	26 024 661-47 0010
	Brushed Chrome	26 024 661-93 0010
	Brushed Dark Platinum	26 024 661-99 0010

Required article

	Wall mounting -	35 003 970-90
	•Min. rough in depth 3-1/8"	0010
	•Max. rough in depth 4"	

Required article

	Hand shower FlowReduce -	28 012 979-42
	Brushed Bronze	0010

Required article

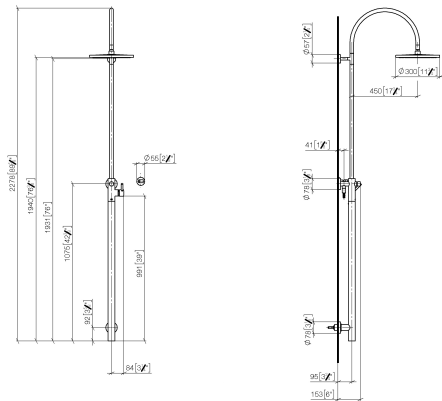
	Hand shower FlowReduce -	28 016 979-42
	Brushed Bronze	0010

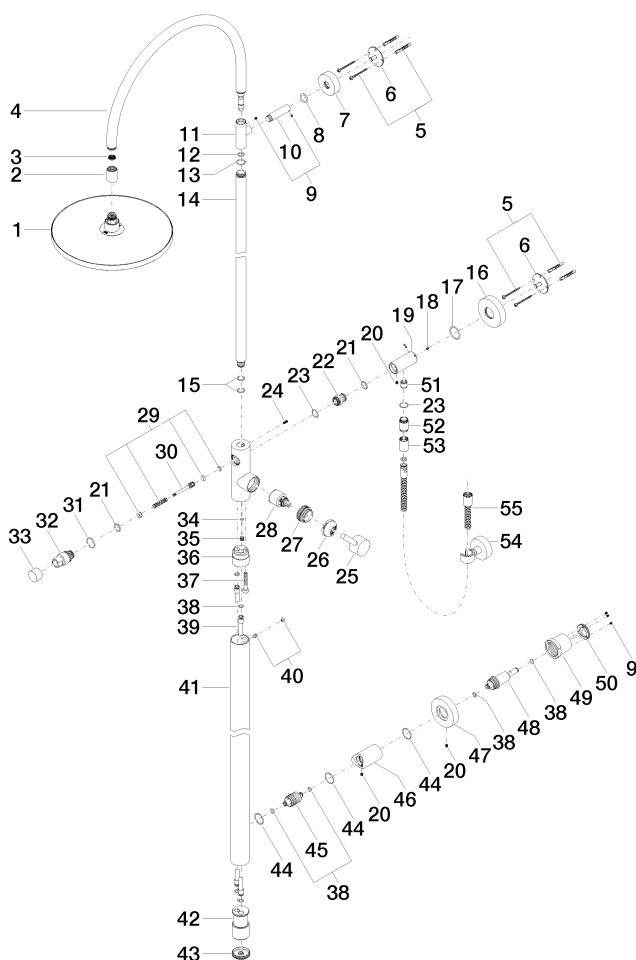
Required article

	Hand shower FlowReduce -	28 018 979-42
	Brushed Bronze	0010

26 024 661 Product version from 10/1/2023

mm [inch]





Spare parts list

Number	Item Number	Designation	Number of units	Lead time
	20 09 31 11 049 90	pin	3.00	2
	3 09 23 01 039 90	sieve	1.00	2
	41 04 28 22 034 00-42	pipe	1.00	60
	12 90 14 10 077 00 90	seal	1.00	2
	27 09 24 04 341 90	nut	1.00	60
	18 09 31 11 061 90	pin	2.00	2
	11 09 17 11 049-42	holder	1.00	60
	46 09 11 10 080 20-42	connection	1.00	60
	45 09 24 04 215 20 90	nipple	1.00	2
	28 90 15 05 064 00 90	cartridge	1.00	2
	52 09 24 03 115 20-42	nipple	1.00	60
	7 09 27 89 000-42	rosette	1.00	60
	6 09 30 11 103 90	holder	2.00	2
	2 09 24 03 163 20-42	adaptor	1.00	60
	5 05 30 31 025 00 90	fixing set	2.00	2
	13 09 14 10 122 90	seal	1.00	2
	25 90 20 66 017 00-42	handle	1.00	30
	17 09 14 10 101 90	seal	1.00	2
	4 90 28 22 082 00-42	spout	1.00	30
	55 90 30 02 072 00-42	hose	1.00	30
	40 04 31 20 034 00 90	plug	1.00	2

Shower riser without hand shower - Brushed Bronze

SERIES SPECIFIC

26 024 661 Product version from 10/1/2023

16	09 27 88 010-42	rosette	1.00	60
19	09 11 10 081 20-42	connection	1.00	60
53	90 21 02 069 00-42	cover	1.00	30
10	09 11 10 083-42	connection	1.00	60
1	04 12 05 091 10-42	shower	1.00	60
9	90 31 11 030 00 90	pin	1.00	2
30	09 31 09 102 20-42	pull-rod	1.00	-
Spare part can no longer be ordered, please order the replacement item				
33	09 20 88 002-42	handle	1.00	60
47	09 27 88 008-42	rosette	1.00	60
29	90 16 02 023 00 90	spring	1.00	2
36	09 24 03 149 10-42	adaptor	1.00	-
Spare part can no longer be ordered, please order the replacement item				
24	09 31 11 024 90	pin	1.00	2
54	28 050 920-42	holder	1.00	-
Spare part can no longer be ordered, please order the replacement item				
49	09 21 02 128 90	sleeve	1.00	2
14	04 28 22 134 20-42	pipe	1.00	60
23	90 14 10 032 00 90	seal	2.00	2
50	09 24 77 002 90	nut	1.00	2
44	90 14 10 063 00 90	seal	3.00	2
35	09 31 20 027 10-00	plug	1.00	10
21	90 14 10 010 00 90	seal	2.00	2
39	04 28 22 038 00 90	connection	2.00	2
37	09 30 30 111 90	screw	1.00	2
22	09 24 03 162 20 90	nipple	1.00	2
42	09 17 11 024 20 90	distributor	1.00	60
8	09 14 10 006 90	seal	1.00	2
26	09 28 30 042-42	cover	1.00	60
51	90 23 01 141 00 90	back-flow preventer	1.00	2
32	09 21 34 081 20-42	nipple	1.00	60
43	09 21 02 132-42	lid	1.00	60
15	90 14 10 055 00 90	seal	2.00	2
38	09 14 10 139 90	seal	6.00	2
31	09 14 10 112 90	seal	1.00	2
48	09 24 04 210 10 90	nipple	1.00	2
34	09 14 10 132 90	seal	1.00	2