

MADISON Slide bar set without hand shower - Chrome







26 413 370



- Slide bar
- Pipe diameter 3/4"
- Flanges, diameter 2-3/8"
- Center to center 33-1/2"
- Metal shower hose 68-7/8" with anti-twist device
- Shower hose connection 1/2"

This article does not include a hand shower!

NOTE: Hand shower sold separately. Please see hand shower options under the miscellaneous articles section of each series.

	Chrome	26 413 370-00
	Brushed Platinum	26 413 370-06
	Platinum	26 413 370-08
	Durabrass (23kt Gold)	26 413 370-09
	Brushed Durabrass (23kt Gold)	26 413 370-28
	Brushed Dark Platinum	26 413 370-99

Recommended article



Rough-in adapter - 35 080 970-90
•Please order rough-in adapter 35 080 970-90 0010 if installed with wall elbow.

Required article



MADISON Metal hand shower with porcelain (white) handle 28 002 970-00
FlowReduce - Chrome 0010

Recommended article



MADISON Wall elbow - Chrome 28 450 370-00

Required article

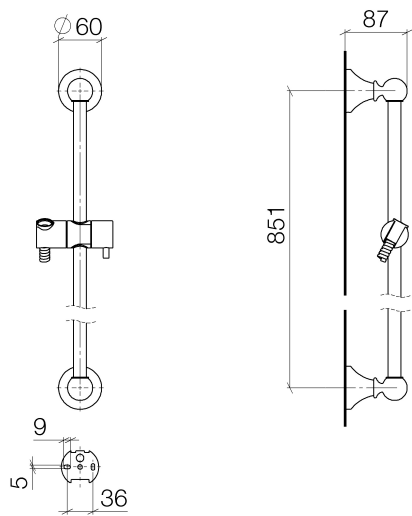


MADISON Hand shower FlowReduce - Chrome 28 002 978-00
•Ø 3-3/4"
•Hand shower see page {PAGE}
•3-way adjustable: COMPACT RAIN, COMPACT SOFT FLOW, COMPACT AQUAPRESSURE FLOW, flow rate max. gpm (at 3 bar)



MADISON Slide bar set without hand shower - Chrome

26 413 370



Codes & Standards

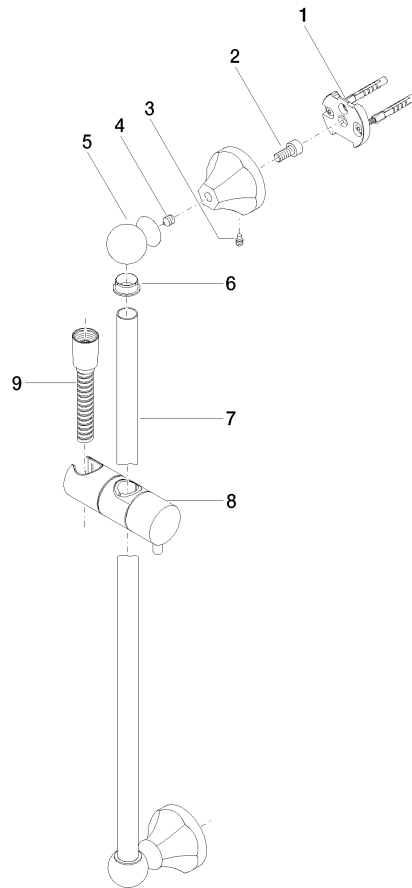
ASME A112.18.1	cUPC	Scottish Water Byelaws	UK Water Supply Regulations
----------------	------	---------------------------	--------------------------------

Certificates

WRAS_2009	IAPMO_4976
-----------	------------

MADISON Slide bar set without hand shower - Chrome

26 413 370



Spare parts list

Number	Item Number	Designation	Number of units	Lead time
1	05 17 97 507 00 90	fixing set	2	2
2	09 30 30 048 90	screw	2	2
3	09 31 11 140 90	pin	2	60
4	09 31 11 002 90	pin	2	2
5	09 21 40 020-00	connection	2	60
6	09 18 40 009 90	sleeve	2	2
7	08 28 22 596-00	pipe	1	10
8	12 580 970-00	Slider - Chrome	1	10
9	28 204 970-00	Metal shower hose 1/2" x 1/2" x 68-7/8" - Chrome	1	2