

Slide bar set without hand shower - Platinum

SERIES-VARIOUS

26 413 979 Product version from 10/1/2023



- COMPACT RAIN, flow rate max. gpm (at 3 bar)
- Center to center 33-5/8"
- Shower hose connection 3/8"
- Metal shower hose 68-7/8" with anti-twist device
- Slide bar
- Pipe diameter 3/4"
- Internal back flow preventer

This article does not include a hand shower!

NOTE: Hand shower sold separately. Please see hand shower options under the miscellaneous articles section of each series.

	Platinum	26 413 979-08
	Chrome	26 413 979-00
	Brushed Platinum	26 413 979-06
	Dark Chrome	26 413 979-19
	Light gold	26 413 979-26
	Brushed Light Gold	26 413 979-27
	Brushed Durabronze (23kt Gold)	26 413 979-28
	Matte Black	26 413 979-33
	Brushed Dark Brass	26 413 979-39
	Brushed Bronze	26 413 979-42
	Brushed Champagne (22kt Gold)	26 413 979-46
	Champagne (22kt Gold)	26 413 979-47
	Brushed Chrome	26 413 979-93
	Brushed Dark Platinum	26 413 979-99

Recommended article

	Rough-in adapter -	35 080 970-90
	• Please order rough-in adapter 35 080 970-90 0010 if installed with wall elbow.	0010

Recommended article

	Wall elbow - Platinum	28 450 980-08
--	------------------------------	---------------

Required article

	Hand shower FlowReduce - Platinum	28 018 979-08 0010
--	--	--------------------

Required article

	SERIES-VARIOUS Hand shower FlowReduce - Platinum	28 029 979-08 0010
--	---	--------------------

Required article

	Hand shower FlowReduce - Platinum	28 016 979-08 0010
--	--	--------------------

Required article

	Hand shower FlowReduce - Platinum	28 012 979-08 0010
--	--	--------------------

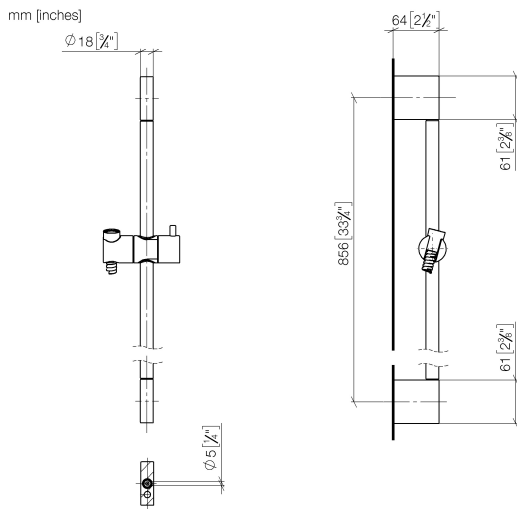
Required article

	SERIES-VARIOUS Hand shower FlowReduce - Platinum	28 025 979-08 0010
--	---	--------------------

Slide bar set without hand shower - Platinum

SERIES-VARIOUS

26 413 979 Product version from 10/1/2023



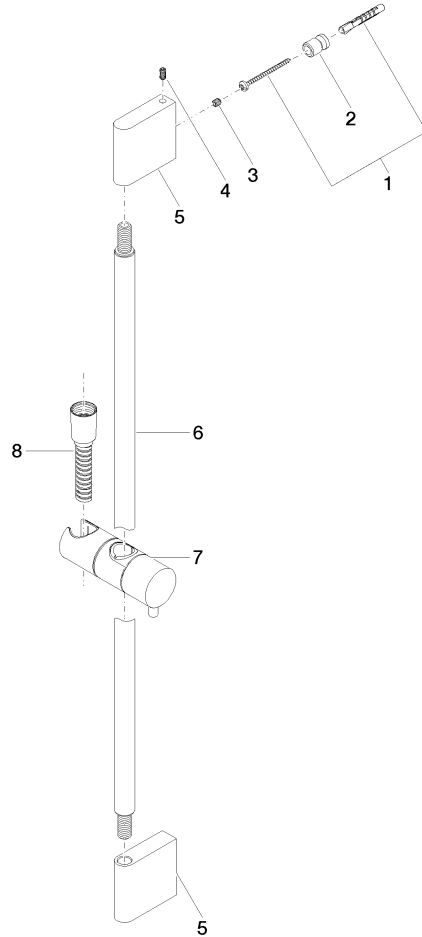
Codes & Standards

ASME A112.18.1	cUPC	Scottish Water Byelaws	UK Water Supply Regulations
----------------	------	------------------------	-----------------------------

XP P 41-280

Certificates and sustainability

WRAS_2009 ACS_20 ACC LY IAPMO_4976



Spare parts list

Number	Item Number	Designation	Number of units	Lead time
4	04 31 11 113 00 90	pin	2.00	2
8	28 322 970-08	Metal shower hose 1/2" x 3/8" x 68-7/8" - Platinum	1.00	40
2	08 17 20 726 90	holder	2.00	2
3	09 31 11 049 90	pin	2.00	2
5	08 17 97 054-08	holder	2.00	40
7	12 580 970-08	Slider - Platinum	1.00	40
6	90 28 22 597 00-08	holder	1.00	-
Spare part can no longer be ordered, please order the replacement item				
1	05 17 20 726 02 90	fixing set	2.00	2