



**Rain shower:**

- Rain shower diameter 11-3/4"
- Rainshower
- Rain shower water flow rate limited to max. 1.8 gpm (at 3 bar)
- Function from: 1.7 gpm

**hand shower:**

**Control element:**

- Shower head / hand shower diverter
- 59" metal shower hose

**Technical data:**

- Projection 16-1/2"
- Height from center of faucet to bottom of rainhead 39-5/8"
- Height from center of faucet to top of shower arm 46"
- Rain shower with descaling system
- Wall bracket with flange Ø 2-1/8"
- Flange for wall connection Ø 2-1/4"
- Shower mixer with flange Ø 2-1/2"
- Pipe diameter 3/4"
- Center to center 5-7/8" ± 1/2"
- 1/2" connection

**Notes:**

- This product can help a building meet the requirements of Green Building Rating Systems, e.g. LEED®, BREEAM®, DGNB

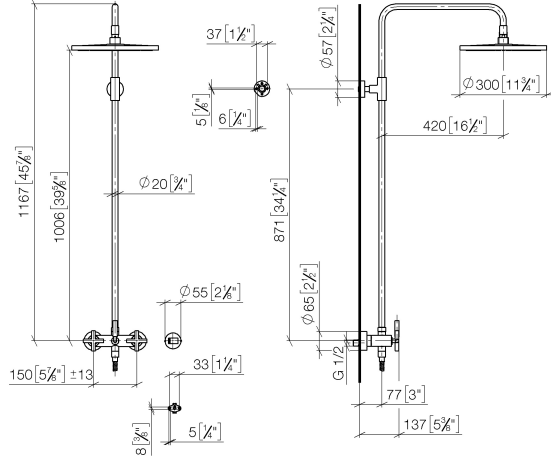
This article does not include a hand shower!

Internal backflow preventer.

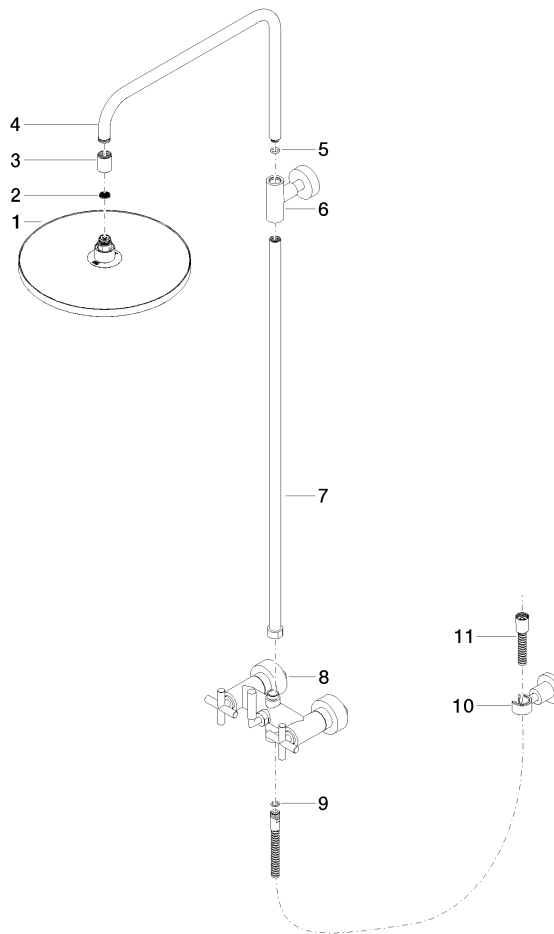
	Matte Black	26 623 892-33 0010
	Chrome	26 623 892-00 0010
	Brushed Platinum	26 623 892-06 0010
	Platinum	26 623 892-08 0010
	Dark Chrome	26 623 892-19 0010
	Brushed Durabronze (23kt Gold)	26 623 892-28 0010
	Brushed Dark Brass	26 623 892-39 0010
	Brushed Bronze	26 623 892-42 0010
	Brushed Champagne (22kt Gold)	26 623 892-46 0010
	Champagne (22kt Gold)	26 623 892-47 0010
	Brushed Chrome	26 623 892-93 0010
	Brushed Dark Platinum	26 623 892-99 0010

26 623 892 Product version from 4/1/2024

mm [inches]  
1:10



Parts for other  
finishes can be found  
here: [Chrome](#)



## Spare parts list

Number	Item Number	Designation	Number of units	Lead time
7	90 28 22 096 00-33	pipe	1.00	30
3	09 24 03 177 20-33	adaptor	1.00	30
9	90 14 20 026 00 90	seal	1.00	2
1	04 12 05 091 10-33	shower	1.00	30
6	90 17 11 037 00-33	holder	1.00	-
Spare part can no longer be ordered, please order the replacement item				
11	28 304 970-33	Metal shower hose 1/2" x 3/8" x 59" - Matte Black	1.00	30
8	04 17 10 020 01-33	fitting	1.00	30
2	09 23 01 039 90	sieve	1.00	2
4	04 28 22 101 20-33	spout	1.00	30
5	90 14 10 011 00 90	seal	1.00	2
10	28 050 892-33	TARA Wall bracket - Matte Black	1.00	10