






CYO Five hole tub set for deck-mounted tub installation - Dark Chrome

27 523 811 Product version from 7/1/2023



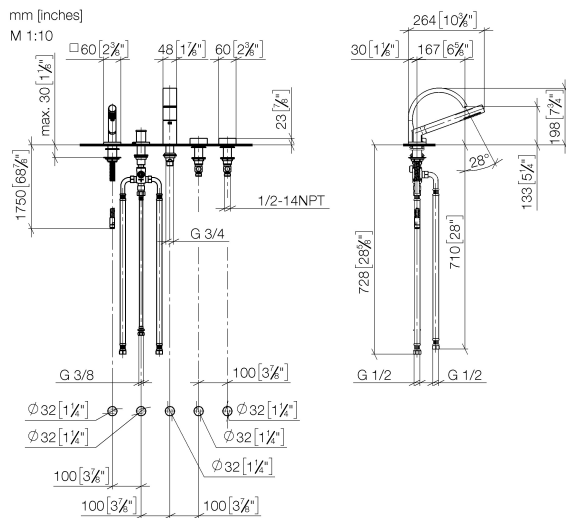
- 6-5/8" Projection
- Rectangular aerated stream
- Total height 7-3/4"
- Height to aerator/spout outlet 5-1/4"
- Hand-held shower: COMPACT RAIN, flow rate max. 1.8 gpm (at 3 bar)
- Hand shower set with anti-scale technology
- Spout hole diameter 1-1/4"
- Valve hole diameter 1-1/4"
- Hand shower set with flange 2-3/8" x 2-3/8"
- Handle Ø 2-3/8"
- Metal shower hose 68-7/8" with anti-twist device
- Water flow rate limited to max. 6.3 gpm

NOTE: Handle inserts are sold separately!

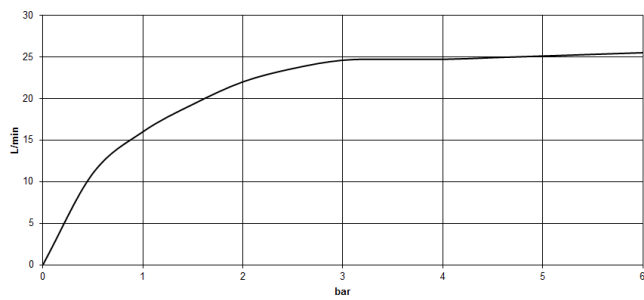
	Dark Chrome	27 523 811-19
	Chrome	27 523 811-00
	Brushed Platinum	27 523 811-06
	Brushed Durabronze (23kt Gold)	27 523 811-28
	Brushed Dark Platinum	27 523 811-99

CYO Five hole tub set for deck-mounted tub installation - Dark Chrome

27 523 811 Product version from 7/1/2023



Flow rate chart



Codes & Standards

ASME A112.18.1

California Energy
Commission
(CEC)

cUPC

Scottish Water
Byelaws

UK Water Supply Regulations



CYO Five hole tub set for deck-mounted tub installation - Dark Chrome

27 523 811 Product version from 7/1/2023

Certificates

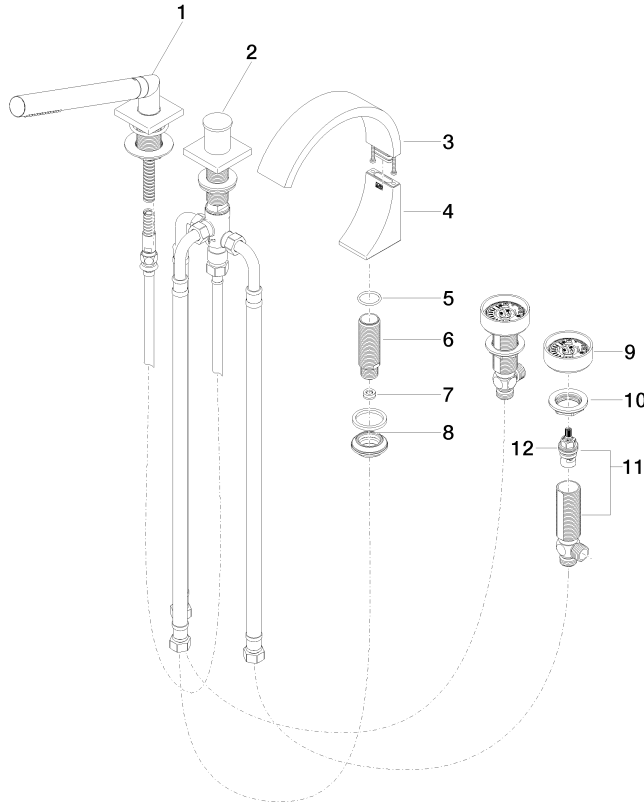
IAPMO_4976

WRAS_2204

CYO Five hole tub set for deck-mounted tub installation - Dark Chrome

27 523 811 Product version from 7/1/2023

Parts for other
finishes can be found
here: [Chrome](#)



Spare parts list

Number	Item Number	Designation	Number of units	Lead time
1	27 702 980-19	Hand shower set for deck-mounted tub installation - Dark Chrome	1	20
2	29 140 670-19	Two-way diverter for deck-mounted tub installation - Dark Chrome	1	20
3	90 11 70 013 00-19	spout	1	20
4	90 19 70 011 00-19	connection	1	20
5	09 14 10 009 90	seal	1	2
6	09 30 01 117 90	connection	1	2
7	09 23 01 057 90	flow reducer	1	2
8	04 23 10 044 09 90	fixing set	1	2
9	90 18 40 291 01-19	handle	2	20
10	04 30 11 038 68 90	fixing set	1	2
11	04 17 11 055 41 90	side panel	2	2
12	90 90 03 239 00 90	top	2	2