



CYO Deck-mounted tub mixer, with hand shower set for deck-mounted tub installation - Brushed Platinum

CYO

27 632 811



- 6-5/8" Projection
- Spout: Rectangular aerator
- Water flow rate limited to max. 6.3 gpm
- Hand-held shower: COMPACT RAIN, flow rate max. 1.8 gpm (at 3 bar)
- Hand shower set with anti-scale technology
- Integrated diverter
- Total height 7-3/4"
- Height to aerator/spout outlet 5-1/4"
- Spout hole diameter 1-1/8"
- Hole diameter for hand shower set 1-1/4"
- Flange for mixer 2-3/8" x 2-3/8"
- Hand shower set with flange 2-3/8" x 2-3/8"
- Metal shower hose 68-7/8" with anti-twist device

Internal backflow preventer.

NOTE: Local building codes may require the use of an anti-scald device. Please refer to remote pressure balance valve (35 914 970 90)

| | | |
|---|-------------------------------|---------------|
|  | Brushed Platinum | 27 632 811-06 |
|  | Chrome | 27 632 811-00 |
|  | Dark Chrome | 27 632 811-19 |
|  | Brushed Durabrass (23kt Gold) | 27 632 811-28 |
|  | Brushed Dark Platinum | 27 632 811-99 |

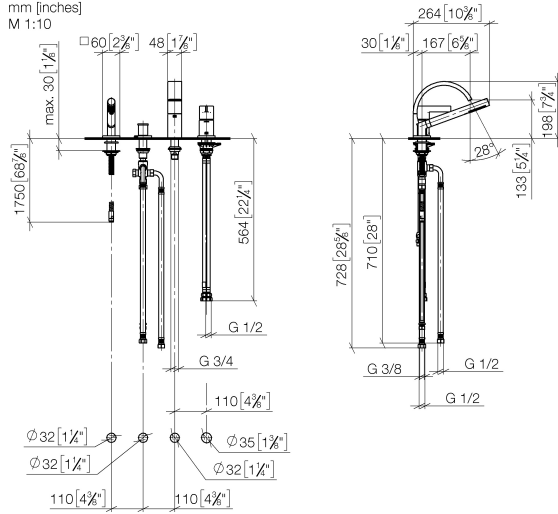
CYO Deck-mounted tub mixer, with hand shower set for deck-mounted tub installation - Brushed Platinum

CYO

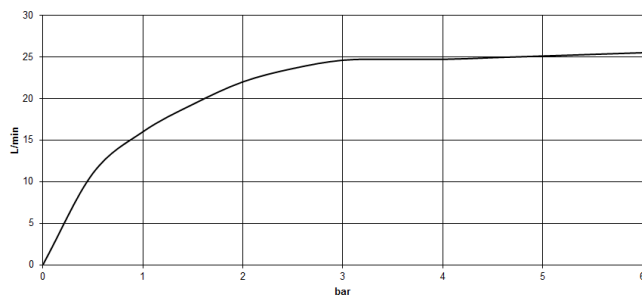
27 632 811

mm [inches]

M 1:10



Flow rate chart



Codes & Standards

| | | | |
|----------------|------------------------------------|------------------------|-----------------------------|
| ASME A112.18.1 | California Energy Commission (CEC) | cUPC | DIN 4109 |
| EN 1717 | ISO 3822 | Scottish Water Byelaws | UK Water Supply Regulations |

Ü-Zeichen



CYO Deck-mounted tub mixer, with hand shower set for deck-mounted tub installation - Brushed Platinum

CYO

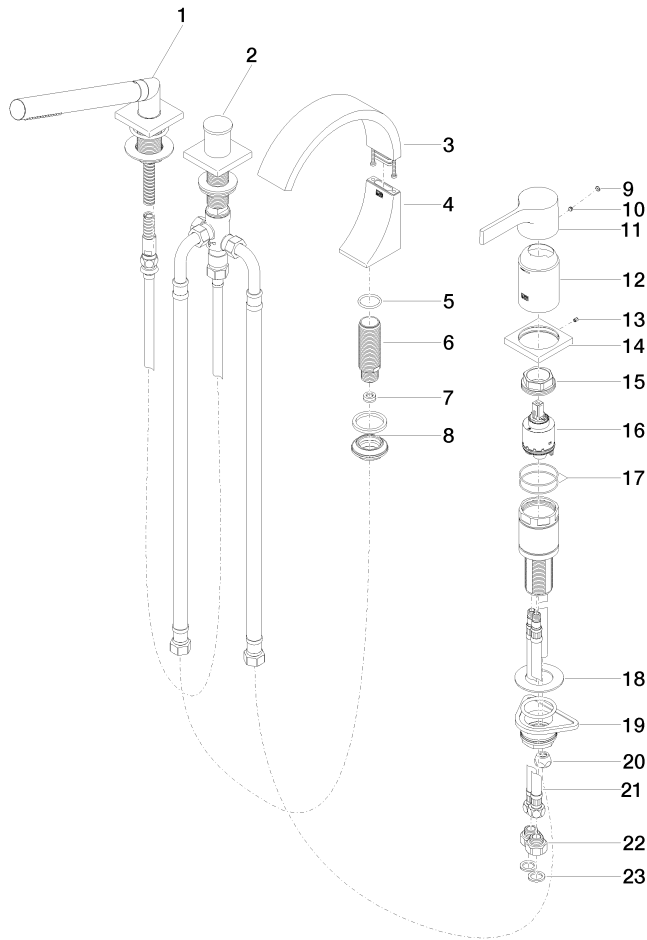
| | | | |
|---------------------------------|------------|-----------|-------------------|
| 27 632 811 | | | |
| Certificates and sustainability | | | |
| LGA_38 | IAPMO_4976 | WRAS_2204 | Belgaqua_21-380-2 |

CYO Deck-mounted tub mixer, with hand shower set for deck-mounted tub installation - Brushed Platinum

CYO

27 632 811

Parts for other
finishes can be found
here: [Chrome](#)





CYO Deck-mounted tub mixer, with hand shower set for deck-mounted tub installation - Brushed Platinum

CYO

27 632 811

Spare parts list

| Number | Item Number | Designation | Number of units | Lead time |
|--------|--------------------|--|-----------------|-----------|
| 12 | 09 28 30 037-06 | cover | 1.00 | 10 |
| 3 | 90 11 70 013 00-06 | spout | 1.00 | 10 |
| 23 | 09 14 05 004 90 | seal | 2.00 | 2 |
| 19 | 04 23 10 044 02 90 | fixing set | 1.00 | 2 |
| 14 | 09 27 67 016-06 | rosette | 1.00 | 10 |
| 4 | 90 19 70 011 00-06 | connection | 1.00 | 10 |
| 22 | 09 24 03 185-00 | nipple | 2.00 | 10 |
| 5 | 09 14 10 009 90 | seal | 1.00 | 2 |
| 18 | 09 30 11 060 90 | disc | 1.00 | 2 |
| 13 | 09 31 11 044 90 | pin | 1.00 | 2 |
| 2 | 29 140 670-06 | Two-way diverter for deck-mounted tub installation - Brushed Platinum | 1.00 | 10 |
| 6 | 09 30 01 117 90 | connection | 1.00 | 2 |
| 7 | 09 23 01 057 90 | flow reducer | 1.00 | 2 |
| 11 | 09 20 67 007-06 | handle | 1.00 | 10 |
| 21 | 04 30 04 021 00 90 | hose | 2.00 | 2 |
| 1 | 27 702 980-06 | Hand shower set for deck-mounted tub installation - Brushed Platinum | 1.00 | 10 |
| 9 | 90 31 20 087 00-06 | plug | 1.00 | 10 |
| 20 | 04 23 30 041 00 90 | threaded connector | 1.00 | 2 |
| 8 | 04 23 10 044 09 90 | fixing set | 1.00 | 2 |
| 17 | 09 14 10 201 90 | seal | 2.00 | 2 |
| 15 | 09 24 04 448 90 | nut | 1.00 | 2 |
| 16 | 90 15 05 039 00 90 | cartridge | 1.00 | 2 |
| 10 | 90 31 11 063 00 90 | pin | 1.00 | 2 |