

META Hand shower set for deck-mounted tub installation - Chrome

META

27 702 660 Product version from 7/1/2023



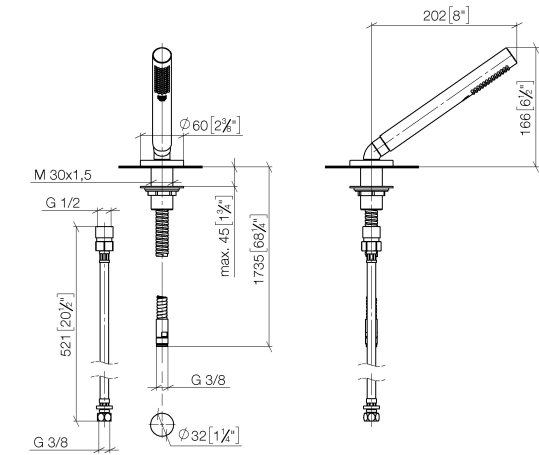
- COMPACT RAIN, flow rate max. 1.8 gpm (at 3 bar)
- Descaling system
- Flange diameter 2-3/8"
- 1-1/4" hole diameter
- Metal shower hose 68-7/8" with anti-twist device

Subsequent shower hose replacement possible without removing the fitting due to two-part construction.

Internal backflow preventer.

	Chrome	27 702 660-00
	Brushed Platinum	27 702 660-06
	Dark Chrome	27 702 660-19
	Light gold	27 702 660-26
	Brushed Light Gold	27 702 660-27
	Matte Black	27 702 660-33
	Brushed Dark Brass	27 702 660-39
	Brushed Bronze	27 702 660-42
	Brushed Champagne (22kt Gold)	27 702 660-46
	Champagne (22kt Gold)	27 702 660-47
	Brushed Chrome	27 702 660-93
	Brushed Dark Platinum	27 702 660-99

mm [inches]



Flow rate chart



Codes & Standards

ASME A112.18.1	California Energy Commission (CEC)	cUPC	DIN 4109
ISO 3822	Scottish Water Byelaws	UK Water Supply Regulations	Ü-Zeichen



META Hand shower set for deck-mounted tub installation - Chrome

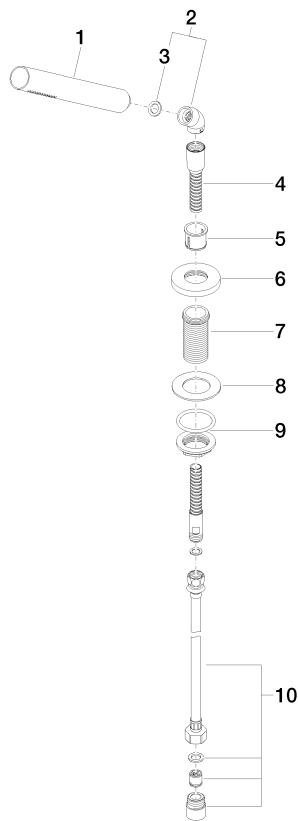
META

27 702 660 Product version from 7/1/2023

Certificates and sustainability

LGA_29 IAPMO_4976 WRAS_2209

Parts for other
finishes can be found
here: Brushed
Platinum



Spare parts list

Number	Item Number	Designation	Number of units	Lead time
4	28 322 970-00	Metal shower hose 1/2" x 3/8" x 68-7/8" - Chrome	1.00	2
9	04 23 10 032 46 90	fixing set	1.00	2
6	09 27 66 003-00	rosette	1.00	10
10	12 505 970 90	Flexible supply line 1/2" x 3/8" x 19-5/8" -	1.00	2
7	09 30 01 090-07	sleeve	1.00	30
8	09 30 11 060 90	disc	1.00	2
5	90 18 40 085 00 90	sleeve	1.00	2
3	90 14 20 002 00 90	seal	1.00	2
2	90 24 04 019 00-00	angle	1.00	10
1	90 12 11 140 41-00	shower	1.00	10