

Hand shower set for deck-mounted tub installation - Brushed Platinum

27 702 979 Product version from 5/15/2020



- COMPACT RAIN, flow rate max. 1.8 gpm (at 3 bar)
- Descaling system
- Flange diameter 2"
- 1-1/4" hole diameter
- Metal shower hose 68-7/8" with anti-twist device

Subsequent shower hose replacement possible without removing the fitting due to two-part construction.

Internal backflow preventer.

	Brushed Platinum	27 702 979-06
	Chrome	27 702 979-00
	Platinum	27 702 979-08
	Durabrand (23kt Gold)	27 702 979-09
	Dark Chrome	27 702 979-19
	Brushed Light Gold	27 702 979-27
	Brushed Durabrand (23kt Gold)	27 702 979-28
	Matte Black	27 702 979-33
	Brushed Bronze	27 702 979-42
	Brushed Champagne (22kt Gold)	27 702 979-46
	Champagne (22kt Gold)	27 702 979-47
	Brushed Chrome	27 702 979-93
	Brushed Dark Platinum	27 702 979-99

Hand shower set for deck-mounted tub installation - Brushed Platinum

27 702 979 Product version from 5/15/2020

mm [inches]



Flow rate chart



Codes & Standards

ASME A112.18.1	ASME A112.18.1/CSA B125.1	California Energy Commission (CEC)	cUPC
DIN 4109	EN 1717	ISO 3822	Scottish Water Byelaws
UK Water Supply Regulations	Ü-Zeichen		



Hand shower set for deck-mounted tub installation - Brushed Platinum

27 702 979 Product version from 5/15/2020

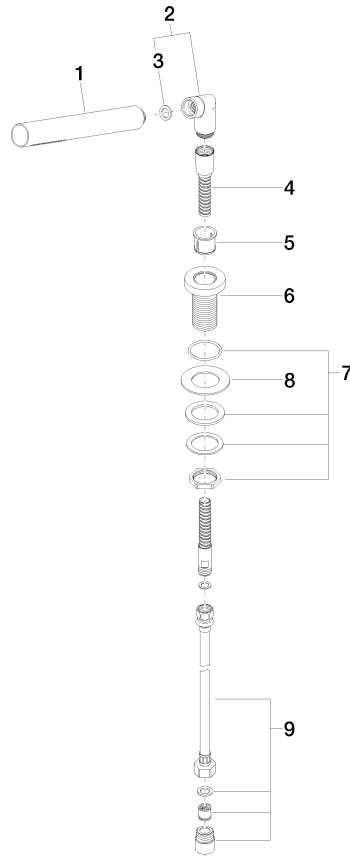
Certificates

LGA_29 IAPMO_4976 Belgaqua_21-383-2 WRAS_2209

Hand shower set for deck-mounted tub installation - Brushed Platinum

27 702 979 Product version from 5/15/2020

Parts for other
finishes can be found
here: [Chrome](#)



Spare parts list

Number	Item Number	Designation	Number of units	Lead time
1	28 019 979-06	Hand shower - Brushed Platinum	1	60
2	04 24 04 287 00-06	nipple	1	10
3	90 14 20 002 00 90	seal	1	2
4	28 322 970-06	Metal shower hose 1/2" x 3/8" x 68-7/8" - Brushed Platinum	1	2
5	90 18 40 085 00 90	sleeve	1	2
6	09 30 01 085-06	rosette	1	10
7	04 30 11 038 66 90	fixing set	1	2
8	09 30 11 060 90	disc	1	2
9	12 505 970 90	Flexible supply line 1/2" x 3/8" x 19-5/8" -	1	2