


Hand shower set for deck-mounted tub installation - Durabrass (23kt Gold)
SERIES SPECIFIC

27 702 979 Product version up to 5/15/2020



- COMPACT RAIN, flow rate max. 1.8 gpm (at 3 bar)
 - Descaling system
 - Flange diameter 2"
 - 1-1/4" hole diameter
 - Metal shower hose 68-7/8" with anti-twist device
- Subsequent shower hose replacement possible without removing the fitting due to two-part construction.
- Internal backflow preventer.

	Durabrass (23kt Gold)	27 702 979-09
	Chrome	27 702 979-00
	Brushed Platinum	27 702 979-06
	Platinum	27 702 979-08
	Dark Chrome	27 702 979-19
	Brushed Light Gold	27 702 979-27
	Brushed Durabrass (23kt Gold)	27 702 979-28
	Matte Black	27 702 979-33
	Brushed Dark Brass	27 702 979-39
	Brushed Bronze	27 702 979-42
	Brushed Champagne (22kt Gold)	27 702 979-46
	Champagne (22kt Gold)	27 702 979-47
	Brushed Chrome	27 702 979-93
	Brushed Dark Platinum	27 702 979-99

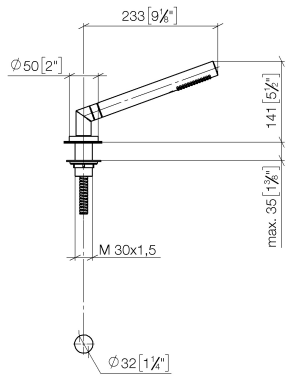


Hand shower set for deck-mounted tub installation - Durabrass (23kt Gold)

SERIES SPECIFIC

27 702 979 Product version up to 5/15/2020

mm [inches]



Flow rate chart



Codes & Standards

ASME A112.18.1	California Energy Commission (CEC)	cUPC	DIN 4109
EN 1717	ISO 3822	Scottish Water Byelaws	UK Water Supply Regulations

Ü-Zeichen



Hand shower set for deck-mounted tub installation - Durabrass (23kt Gold)

SERIES SPECIFIC

27 702 979 Product version up to 5/15/2020

Certificates and sustainability

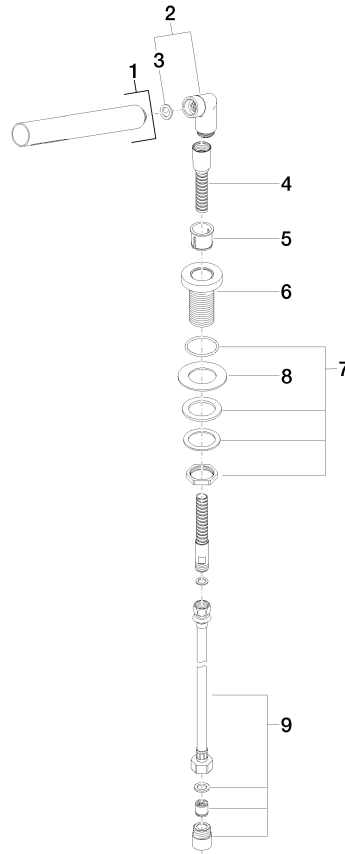
LGA_29

IAPMO_4976

Belgaqua_21-383-2

WRAS_2209

Parts for other
finishes can be found
here: Chrome



Spare parts list

Number	Item Number	Designation	Number of units	Lead time
9	12 505 970 90	Flexible supply line 1/2" x 3/8" x 19-5/8" -	1.00	2
8	09 30 11 060 90	disc	1.00	2
6	09 30 01 085-09	rosette	1.00	40
4	28 322 970-09	Metal shower hose 1/2" x 3/8" x 68-7/8" - Durabrass (23kt Gold)	1.00	40
7	04 30 11 038 66 90	fixing set	1.00	2
3	90 14 20 002 00 90	seal	1.00	2
5	90 18 40 085 00 90	sleeve	1.00	2