

Hand shower set for deck-mounted tub installation - Brushed Platinum
SERIES SPECIFIC

27 702 980
Product version up to 5/15/2020



- COMPACT RAIN, flow rate max. 1.8 gpm (at 3 bar)
- Descaling system
- Flange 2-3/8" x 2-3/8"
- 1-1/4" hole diameter
- Metal shower hose 68-7/8" with anti-twist device

Subsequent shower hose replacement possible without removing the fitting due to two-part construction.

Internal backflow preventer.

	Brushed Platinum	27 702 980-06
	Chrome	27 702 980-00
	Platinum	27 702 980-08
	Dark Chrome	27 702 980-19
	Brushed Light Gold	27 702 980-27
	Brushed Durabrass (23kt Gold)	27 702 980-28
	Matte Black	27 702 980-33
	Brushed Champagne (22kt Gold)	27 702 980-46
	Champagne (22kt Gold)	27 702 980-47
	Brushed Chrome	27 702 980-93
	Brushed Dark Platinum	27 702 980-99



Flow rate chart



Codes & Standards

ASME A112.18.1	California Energy Commission (CEC)	cUPC	DIN 4109
EN 1717	ISO 3822	Scottish Water Byelaws	UK Water Supply Regulations

Ü-Zeichen



Hand shower set for deck-mounted tub installation - Brushed Platinum

SERIES SPECIFIC

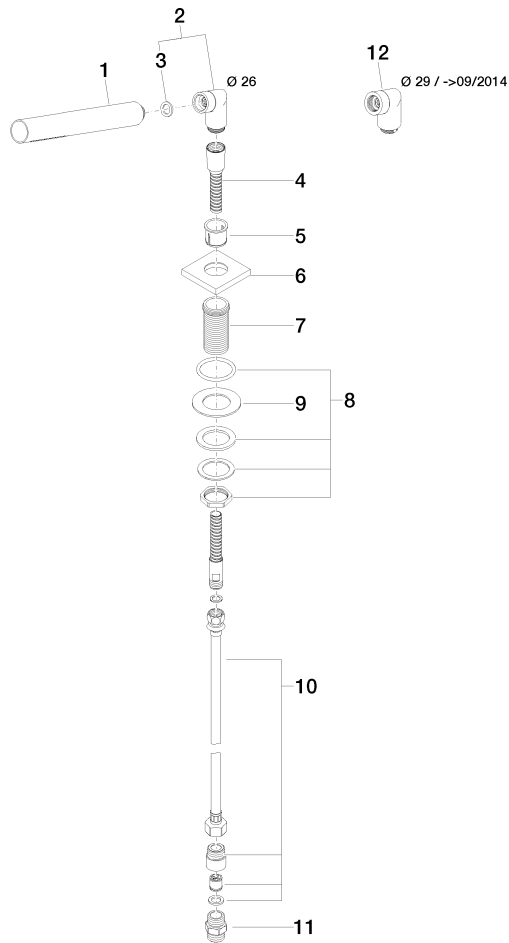
27 702 980 Product version up to 5/15/2020

Certificates and sustainability

LGA\_29 IAPMO\_4976 Belgaqua\_21-383-2 WRAS\_2209

27 702 980 Product version up to 5/15/2020

Parts for other  
finishes can be found  
here: Chrome



## Spare parts list

Number	Item Number	Designation	Number of units	Lead time
12	04 24 04 187 00-06	nipple	1.00	10
9	09 30 11 060 90	disc	1.00	2
6	09 27 68 003-06	rosette	1.00	10
8	04 23 10 032 46 90	fixing set	1.00	2
10	12 505 970 90	Flexible supply line 1/2" x 3/8" x 19-5/8" -	1.00	2
4	28 322 970-06	Metal shower hose 1/2" x 3/8" x 68-7/8" - Brushed Platinum	1.00	2
2	04 24 04 287 00-06	nipple	1.00	10
7	09 30 01 090-07	sleeve	1.00	30
5	90 18 40 085 00 90	sleeve	1.00	2
3	90 14 20 002 00 90	seal	1.00	2
11	90 24 03 168 00 90	nipple	1.00	2
1	90 12 11 140 41-06	shower	1.00	10