



Hand shower set for deck-mounted tub installation - Platinum

SERIES SPECIFIC

27 702 980 Product version up to 5/15/2020

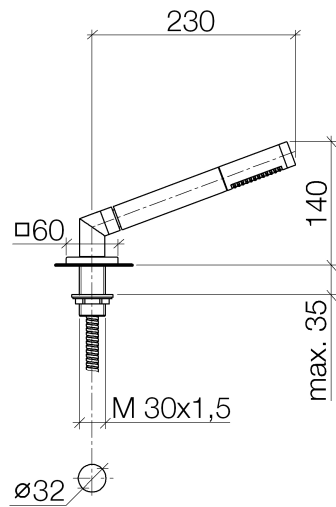


- COMPACT RAIN, flow rate max. 1.8 gpm (at 3 bar)
- Descaling system
- Flange 2-3/8" x 2-3/8"
- 1-1/4" hole diameter
- Metal shower hose 68-7/8" with anti-twist device

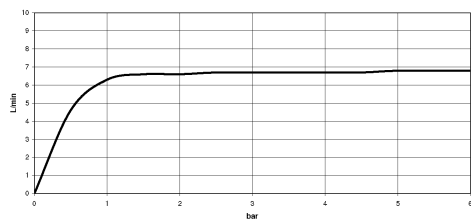
Subsequent shower hose replacement possible without removing the fitting due to two-part construction.

Internal backflow preventer.

| | | |
|---|-------------------------------|---------------|
|  | Platinum | 27 702 980-08 |
|  | Chrome | 27 702 980-00 |
|  | Brushed Platinum | 27 702 980-06 |
|  | Dark Chrome | 27 702 980-19 |
|  | Brushed Light Gold | 27 702 980-27 |
|  | Brushed Durabrass (23kt Gold) | 27 702 980-28 |
|  | Matte Black | 27 702 980-33 |
|  | Brushed Champagne (22kt Gold) | 27 702 980-46 |
|  | Champagne (22kt Gold) | 27 702 980-47 |
|  | Brushed Chrome | 27 702 980-93 |
|  | Brushed Dark Platinum | 27 702 980-99 |



Flow rate chart



Codes & Standards

| | | | |
|----------------|------------------------------------|------------------------|-----------------------------|
| ASME A112.18.1 | California Energy Commission (CEC) | cUPC | DIN 4109 |
| EN 1717 | ISO 3822 | Scottish Water Byelaws | UK Water Supply Regulations |

Ü-Zeichen



Hand shower set for deck-mounted tub installation - Platinum

SERIES SPECIFIC

27 702 980 Product version up to 5/15/2020

Certificates and sustainability

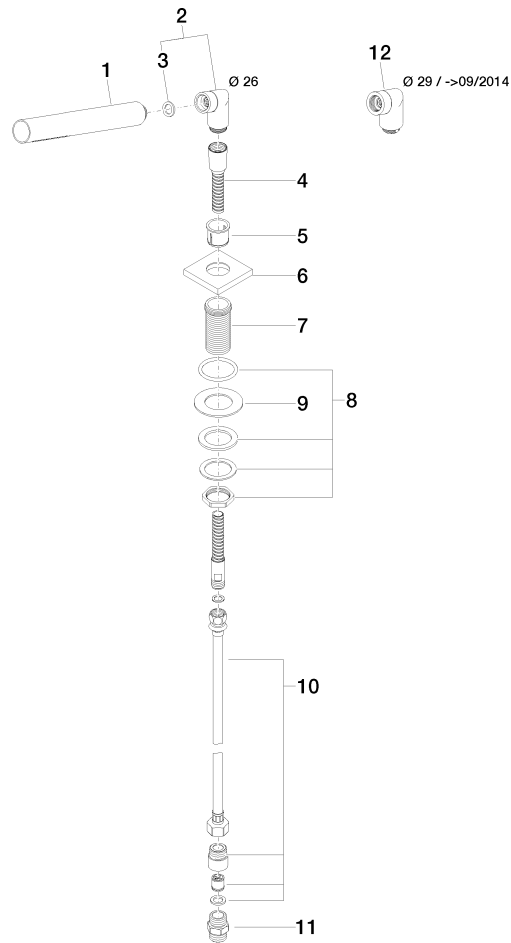
LGA_29 IAPMO_4976 Belgaqua_21-383-2 WRAS_2209

Hand shower set for deck-mounted tub installation - Platinum

SERIES SPECIFIC

27 702 980 Product version up to 5/15/2020

Parts for other
finishes can be found
here: [Chrome](#)



Spare parts list

| Number | Item Number | Designation | Number of units | Lead time |
|--------|--------------------|--|-----------------|-----------|
| 9 | 09 30 11 060 90 | disc | 1.00 | 2 |
| 2 | 04 24 04 287 00-08 | nipple | 1.00 | 40 |
| 8 | 04 23 10 032 46 90 | fixing set | 1.00 | 2 |
| 10 | 12 505 970 90 | Flexible supply line 1/2" x 3/8" x 19-5/8" - | 1.00 | 2 |
| 7 | 09 30 01 090-07 | sleeve | 1.00 | 30 |
| 6 | 09 27 68 003-08 | rosette | 1.00 | 40 |
| 12 | 04 24 04 187 00-08 | nipple | 1.00 | 40 |
| 5 | 90 18 40 085 00 90 | sleeve | 1.00 | 2 |
| 3 | 90 14 20 002 00 90 | seal | 1.00 | 2 |
| 11 | 90 24 03 168 00 90 | nipple | 1.00 | 2 |
| 1 | 90 12 11 140 41-08 | shower | 1.00 | 40 |
| 4 | 28 322 970-08 | Metal shower hose 1/2" x 3/8" x 68-7/8" - Platinum | 1.00 | 40 |