

Hand shower set for deck-mounted tub installation - Dark Chrome

SERIES SPECIFIC

27 702 980 Product version from 5/15/2020

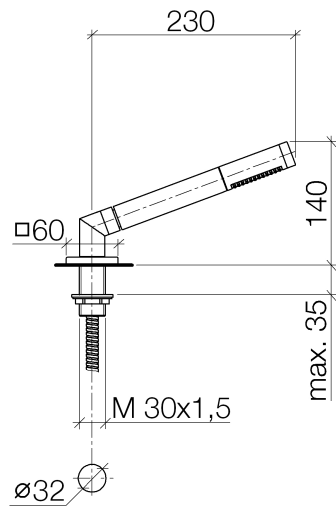


- COMPACT RAIN, flow rate max. 1.8 gpm (at 3 bar)
- Descaling system
- Flange 2-3/8" x 2-3/8"
- 1-1/4" hole diameter
- Metal shower hose 68-7/8" with anti-twist device

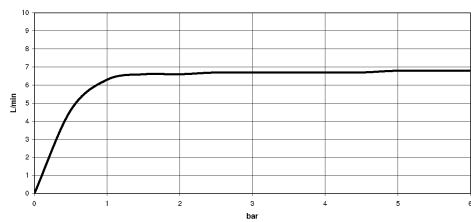
Subsequent shower hose replacement possible without removing the fitting due to two-part construction.

Internal backflow preventer.

	Dark Chrome	27 702 980-19
	Chrome	27 702 980-00
	Brushed Platinum	27 702 980-06
	Platinum	27 702 980-08
	Brushed Light Gold	27 702 980-27
	Brushed Durabronze (23kt Gold)	27 702 980-28
	Matte Black	27 702 980-33
	Brushed Champagne (22kt Gold)	27 702 980-46
	Champagne (22kt Gold)	27 702 980-47
	Brushed Chrome	27 702 980-93
	Brushed Dark Platinum	27 702 980-99



Flow rate chart



Codes & Standards

ASME A112.18.1	California Energy Commission (CEC)	cUPC	DIN 4109
ISO 3822	Scottish Water Byelaws	UK Water Supply Regulations	Ü-Zeichen



Hand shower set for deck-mounted tub installation - Dark Chrome

SERIES SPECIFIC

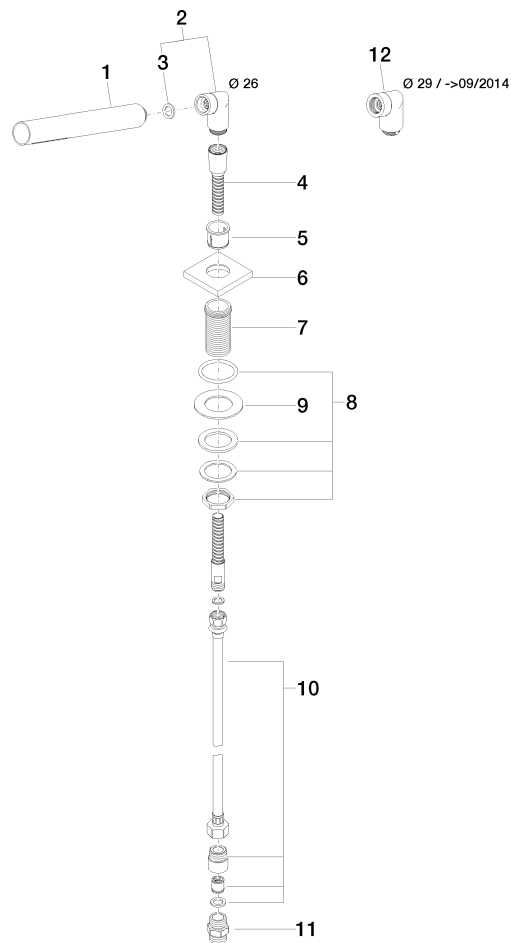
27 702 980 Product version from 5/15/2020

Certificates and sustainability

LGA_29 IAPMO_4976 WRAS_2209

27 702 980 Product version from 5/15/2020

Parts for other
finishes can be found
here: [Chrome](#)



Spare parts list

Number	Item Number	Designation	Number of units	Lead time
7	09 30 01 090-07	sleeve	1.00	30
4	28 322 970-19	Metal shower hose 1/2" x 3/8" x 68-7/8" - Dark Chrome	1.00	20
5	90 18 40 085 00 90	sleeve	1.00	2
3	90 14 20 002 00 90	seal	1.00	2
10	12 505 970 90	Flexible supply line 1/2" x 3/8" x 19-5/8" -	1.00	2
12	04 24 04 187 00-19	nipple	1.00	-
Spare part can no longer be ordered, please order the replacement item				
2	04 24 04 287 00-19	nipple	1.00	20
8	04 23 10 032 46 90	fixing set	1.00	2
9	09 30 11 060 90	disc	1.00	2
6	09 27 68 003-19	rosette	1.00	60
11	90 24 03 168 00 90	nipple	1.00	2
1	90 12 11 140 41-19	shower	1.00	20