

Hand shower set for deck-mounted tub installation - Brushed Durabrass (23kt Gold) SERIES SPECIFIC

27 702 980 Product version up to 5/15/2020



- COMPACT RAIN, flow rate max. 1.8 gpm (at 3 bar)
- Descaling system
- Flange 2-3/8" x 2-3/8"
- 1-1/4" hole diameter
- Metal shower hose 68-7/8" with anti-twist device

Subsequent shower hose replacement possible without removing the fitting due to two-part construction.
Internal backflow preventer.

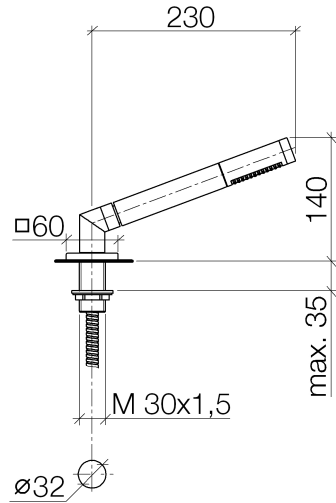
	Brushed Durabrass (23kt Gold)	27 702 980-28
	Chrome	27 702 980-00
	Brushed Platinum	27 702 980-06
	Platinum	27 702 980-08
	Dark Chrome	27 702 980-19
	Brushed Light Gold	27 702 980-27
	Matte Black	27 702 980-33
	Brushed Dark Brass	27 702 980-39
	Brushed Champagne (22kt Gold)	27 702 980-46
	Champagne (22kt Gold)	27 702 980-47
	Brushed Chrome	27 702 980-93
	Brushed Dark Platinum	27 702 980-99



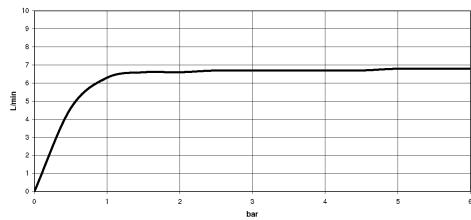
Hand shower set for deck-mounted tub installation - Brushed Durabronz (23kt Gold)

SERIES SPECIFIC

27 702 980 Product version up to 5/15/2020



Flow rate chart



Codes & Standards

California Energy Commission (CEC)	DIN 4109	EN 1717	ISO 3822
Scottish Water Byelaws	UK Water Supply Regulations	Ü-Zeichen	



Hand shower set for deck-mounted tub installation - Brushed Durabronz (23kt Gold) SERIES SPECIFIC

27 702 980 Product version up to 5/15/2020

Certificates and sustainability

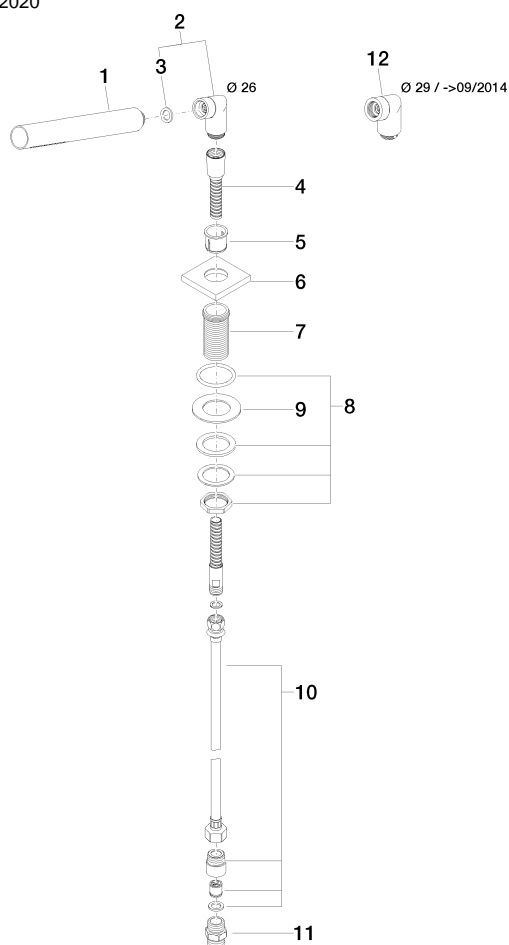
LGA_29

Belgaqua_21-383-2 WRAS_2209

Hand shower set for deck-mounted tub installation - Brushed Durabronz (23kt Gold) SERIES SPECIFIC

27 702 980 Product version up to 5/15/2020

Parts for other
finishes can be found
here: Chrome



Spare parts list

Number	Item Number	Designation	Number of units	Lead time
6	09 27 68 003-28	rosette	1.00	20
9	09 30 11 060 90	disc	1.00	2
4	28 322 970-28	Metal shower hose 1/2" x 3/8" x 68-7/8" - Brushed Durabronz (23kt Gold)	1.00	20
7	09 30 01 090-07	sleeve	1.00	30
2	04 24 04 287 00-28	nipple	1.00	20
8	04 23 10 032 46 90	fixing set	1.00	2
12	04 24 04 187 00-28	nipple	1.00	20
10	12 505 970 90	Flexible supply line 1/2" x 3/8" x 19-5/8" -	1.00	2
5	90 18 40 085 00 90	sleeve	1.00	2
3	90 14 20 002 00 90	seal	1.00	2
11	90 24 03 168 00 90	nipple	1.00	2
1	90 12 11 140 41-28	shower	1.00	20