

Side spray set - Platinum

27 723 970 Product version from 2/1/2023



- With square flange
- Spray mode
- Integrated diverter
- Total height 7-1/2"
- Side spray hole diameter 1-1/4"
- Fabric braided spray hose 59"
- Sprayface with descaling system
- lead-free

Can only be combined with 33826680, 32815680.

Internal backflow preventer.

Residual water may drip from the sprayer after shut-off

Flexible positioning of components.

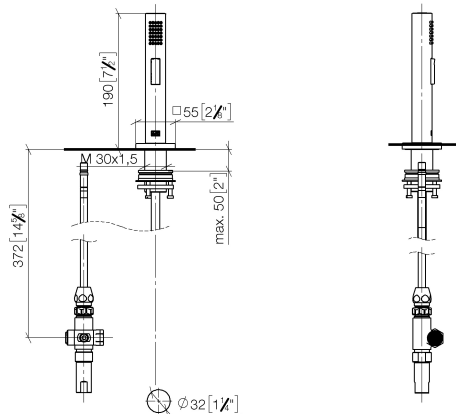
Button has to be pressed while using.

| | | |
|---|--------------------------------|---------------|
|  | Platinum | 27 723 970-08 |
|  | Chrome | 27 723 970-00 |
|  | Brushed Platinum | 27 723 970-06 |
|  | Dark Chrome | 27 723 970-19 |
|  | Brushed Durabronze (23kt Gold) | 27 723 970-28 |
|  | Brushed Champagne (22kt Gold) | 27 723 970-46 |
|  | Champagne (22kt Gold) | 27 723 970-47 |
|  | Brushed Dark Platinum | 27 723 970-99 |

Side spray set - Platinum

27 723 970 Product version from 2/1/2023

mm [inches]



Codes & Standards

DIN 4109

ISO 3822

NSF372

NSF61

Ü-Zeichen

Certificates

LGA_29

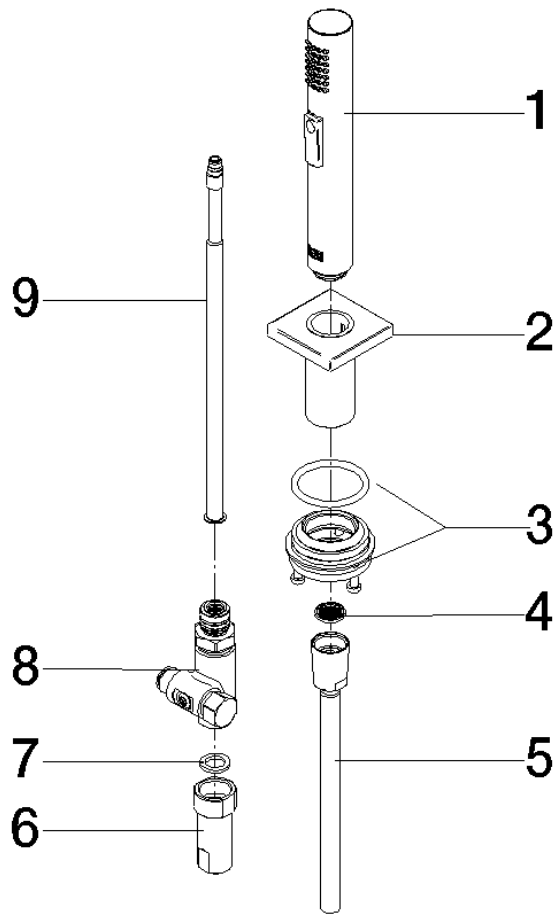
IAPMO_N-4976

IAPMO_6397

Side spray set - Platinum

27 723 970 Product version from 2/1/2023

Parts for other
finishes can be found
here: [Chrome](#)



Spare parts list

| Number | Item Number | Designation | Number of units | Lead time |
|--|--------------------|-------------|-----------------|-----------|
| 1 | 04 12 11 158 00-08 | shower | 1 | 40 |
| 2 | 90 27 78 011 00-08 | shaft | 1 | - |
| Spare part can no longer be ordered, please order the replacement item | | | | |
| 3 | 90 30 10 058 00 90 | fixing set | 1 | 2 |
| 4 | 09 23 01 039 90 | sieve | 1 | 2 |
| 5 | 90 30 02 062 00-08 | hose | 1 | 40 |
| 6 | 90 24 03 241 00 90 | nipple | 1 | 2 |
| 7 | 90 14 20 026 00 90 | seal | 1 | 2 |
| 8 | 90 17 09 046 12 90 | diverter | 1 | 2 |
| 9 | 90 28 20 068 00 90 | connection | 1 | 2 |